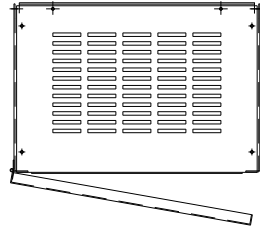
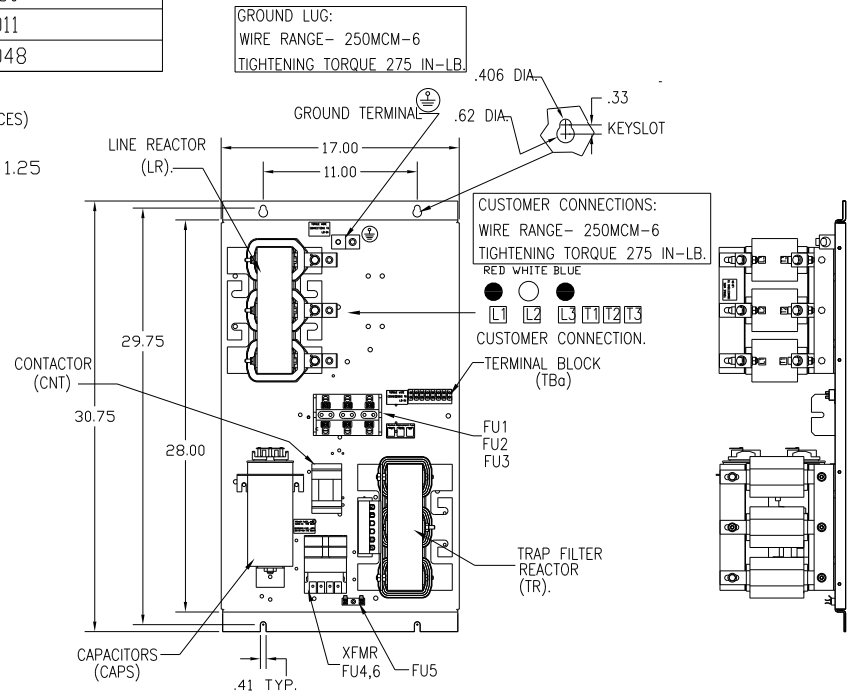
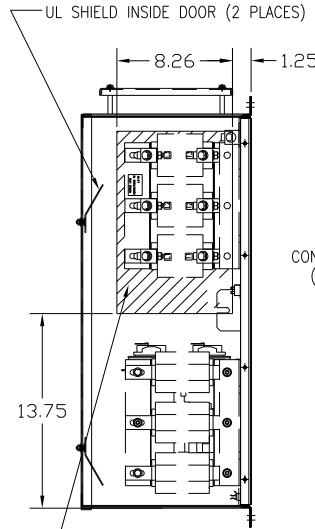
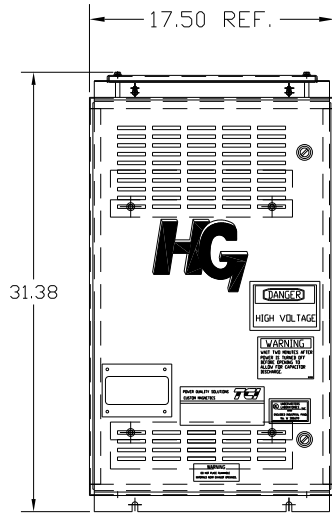
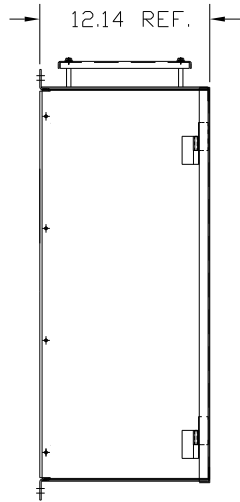


UNIT SPECIFICATIONS:					
KW	HARMONIC	VOLT	HZ	PHASE	FLA
45	5TH	400	50	3	90
ENCLOSURE		NEMA 1			
APPROX.WT. LBS.		195			



SYMBOL	TCI PART NUMBER
LR	KDRG33T
TR	KTR18L55HG
CAP1, 2, (15 KVAR)	KCAP15A6B
XFMR.	24385
Fu1, 2, 3	22926
Fu4,6	13180
Fu5	24011
CNT	23048



HATCHED AREAS ARE SUGGESTED
CUSTOMER WIRE AND EXIT LOCATIONS
(BOTTOM ENTRANCE ALTERNATE-CONSULT TCI)



ENCLOSURE NOT SHOWN
CUSTOMER IS RESPONSIBLE FOR INSTALLATION
TO MEET ALL NATIONAL AND LOCAL ELECTRICAL CODES.

SEE DRAWING# 27703 FOR SCHEMATIC

		TOLERANCES (EXCEPT AS NOTED)		7878 N. 86th STREET MILWAUKEE, WI 53224	
		DECIMAL		HG45LW01STC, 45KW 400/3/50, ENCLOSED, W/CNT	
		XX ± .03 XXX ± .01		DRN. BY DSW DATE 11/11/2010 DWG. NO. 104533DG	
		FRACTIONAL ± 1/32		SCALE TO FIT	
A AS BUILT		11/04/10		BY DSW	
NO REVISION		DATE		BY	
		± 1/2°		SHT. 1 OF 1	