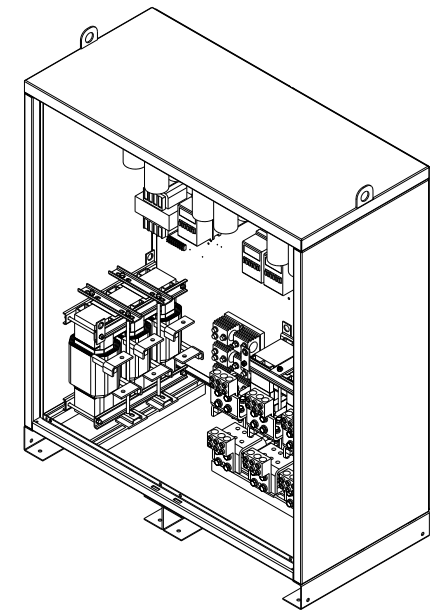
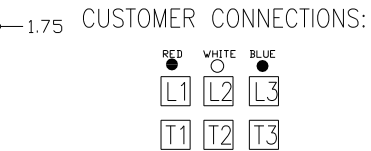


HG450LW01STC

UNIT SPECIFICATIONS:						
KW	HARMONIC	VOLT	HZ	PHASE	FLA	
450	5TH	400	50	3	810	
ENCLOSURE		NEMA 1				
APPROX.WT. LBS.		1350				



GROUND LUG:
WIRE RANGE-THREE 600MCM-2
TIGHTENING TORQUE 375 IN-LB.

CUSTOMER CONNECTIONS:
WIRE RANGE-THREE 600MCM-2
TIGHTENING TORQUE 375 IN-LB.

FOR SCHEMATIC SEE DWG# 27703-1

CUSTOMER IS RESPONSIBLE FOR INSTALLATION TO MEET ALL NATIONAL AND LOCAL ELECTRICAL CODES.

SYMBOL	TCI PART NUMBER
LR	KDRY31T
TR	KTR183L55
CAP1,-15 (20 KVAR)	KCAP20A6B
CAP16 (15 KVAR)	KCAP10A6B
XFMR.	24389
Fu1, 2, 3	13329
Fu4,6	23820
Fu5	17569
CNT1-4	19246

REVISION	DATE	BY
AS BUILT	3/01/2011	DSW

		7878 N. 86th STREET MILWAUKEE, WI 53224
TCI, HG7 Standard, 450kW 400/3/50, Type1, CNT.		
DRN BY DSW SCALE --	DATE 3/1/2011 APRVD.	DWG. NO. 104610DG SHT. 1 OF 1

TOLERANCES (EXCEPT AS NOTED)
DECIMAL
.XX ± .03
.XXX ± .01
FRACTIONAL
± 1/32
ANGULAR
± 1/2°