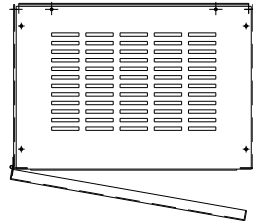
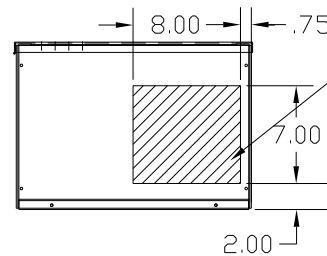
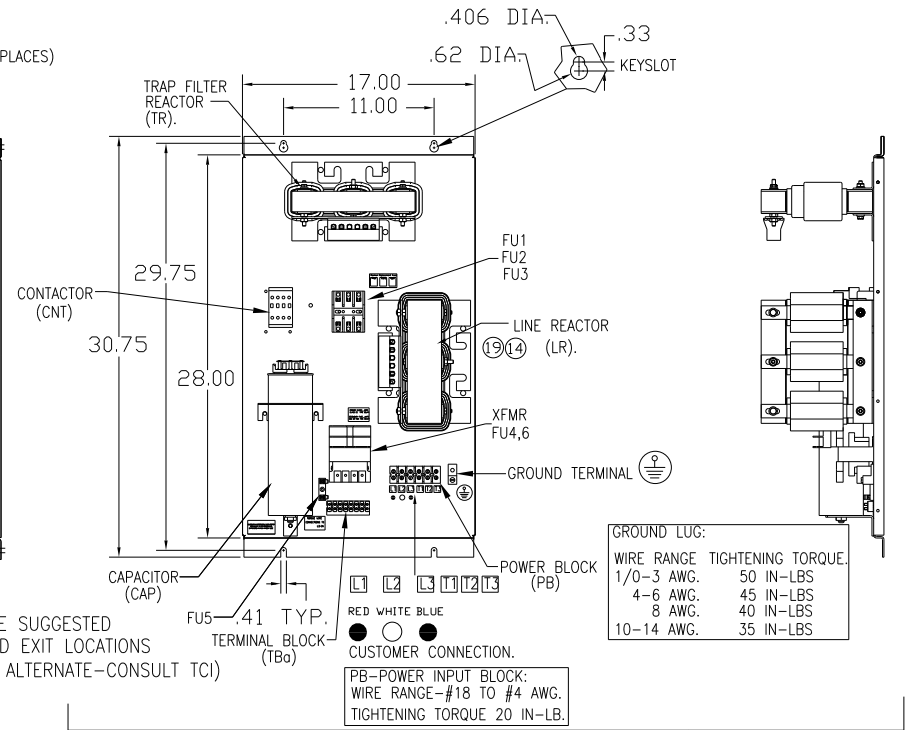
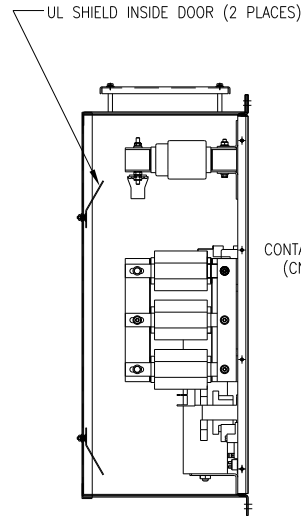
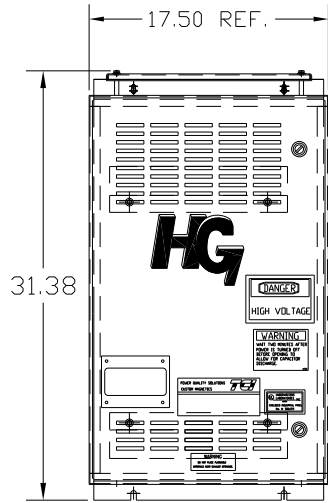
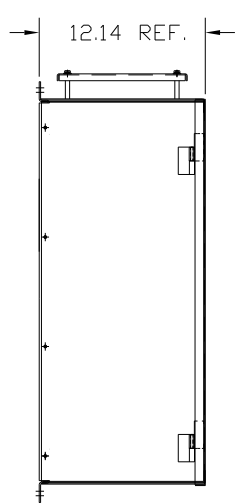


UNIT SPECIFICATIONS:					
KW	HARMONIC	VOLT	HZ	PHASE	FLA
30	5TH	400	50	3	60
ENCLOSURE		NEMA 1			
APPROX.WT. LBS.		165			



SYMBOL	TCI PART NUMBER
LR	KDRG31T
TR	KTR12L55HG
CAP1. (20 KVAR)	KCAP20A6B
XFMR.	24385
Fu1, 2, 3	11307
Fu4,6	13180
Fu5	24011
CNT	23372



HATCHED AREAS ARE SUGGESTED CUSTOMER WIRE AND EXIT LOCATIONS (BOTTOM ENTRANCE ALTERNATE-CONSULT TCI)

PB-POWER INPUT BLOCK:
WIRE RANGE-#18 TO #4 AWG.
TIGHTENING TORQUE 20 IN-LB.

CUSTOMER IS RESPONSIBLE FOR INSTALLATION TO MEET ALL NATIONAL AND LOCAL ELECTRICAL CODES.

SEE DRAWING# 27703 FOR SCHEMATIC

				TOLERANCES (EXCEPT AS NOTED)		TCI 7878 N. 86th STREET MILWAUKEE, WI 53224	
				DECIMAL		HG30LW01STC, 30KW 400/3/50, ENCLOSED, W/CNT	
				XX ± .03		DRN. BY DSW DATE 11/11/2010 DWG. NO. 104531DG	
				XXX ± .01		SCALE TO FIT	
				FRACTIONAL ± 1/32		SHT. 1 OF 1	
				ANGULAR ± 1/2°			
A	AS BUILT	11/04/10	DSW				
NO	REVISION	DATE	BY				