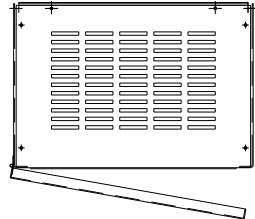
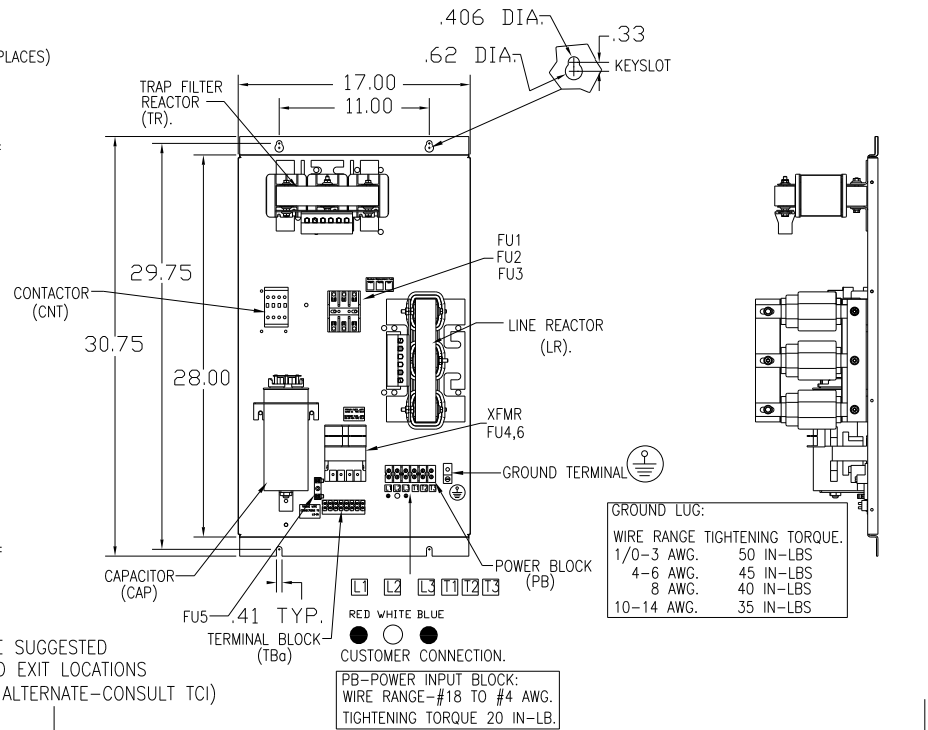
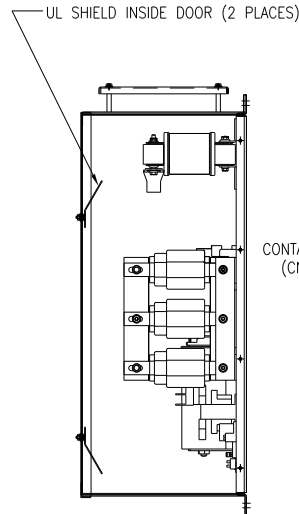
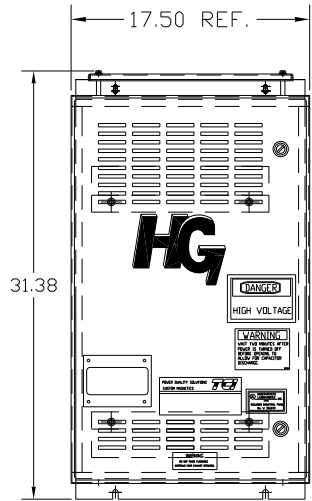
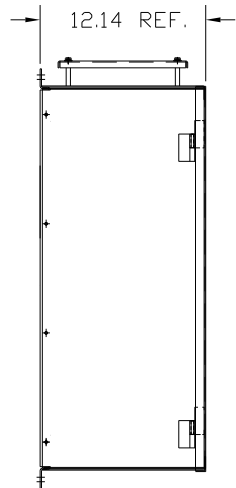


UNIT SPECIFICATIONS:					
KW	HARMONIC	VOLT	HZ	PHASE	FLA
22	5TH	400	50	3	45
ENCLOSURE		NEMA 1			
APPROX.WT. LBS.		135			

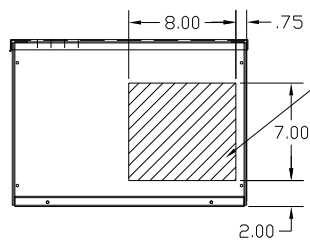


SYMBOL	TCI PART NUMBER
LR	KDRH31T
TR	KTR9L55HG
CAP1. (15 KVAR)	KCAP15A6B
XFMR.	24385
Fu1, 2, 3	22665
Fu4,6	13180
Fu5	24011
CNT	12434



GROUND LUG:

WIRE RANGE	TIGHTENING TORQUE.
1/0-3 AWG.	50 IN-LBS
4-6 AWG.	45 IN-LBS
8 AWG.	40 IN-LBS
10-14 AWG.	35 IN-LBS



HATCHED AREAS ARE SUGGESTED CUSTOMER WIRE AND EXIT LOCATIONS (BOTTOM ENTRANCE ALTERNATE-CONSULT TCI)

CUSTOMER IS RESPONSIBLE FOR INSTALLATION TO MEET ALL NATIONAL AND LOCAL ELECTRICAL CODES.

SEE DRAWING# 27703 FOR SCHEMATIC

TOLERANCES (EXCEPT AS NOTED)		TOLERANCES (EXCEPT AS NOTED)		TOLERANCES (EXCEPT AS NOTED)	
	DECIMAL		DECIMAL		DECIMAL
	XX ± .03		XX ± .03		XX ± .03
	XXX ± .01		XXX ± .01		XXX ± .01
	FRACTIONAL ± 1/32		FRACTIONAL ± 1/32		FRACTIONAL ± 1/32
	ANGULAR ± 1/2°		ANGULAR ± 1/2°		ANGULAR ± 1/2°
A	AS BUILT	11/04/10	DSW	DATE	11/11/2010
NO	REVISION	DATE	BY	SCALE	TO FIT

7878 N. 86th STREET  
MILWAUKEE, WI 53224

**TCI**

HG22LW01STC, 22KW  
400/3/50, ENCLOSED, W/CNT

DRN. BY: DSW DATE: 11/11/2010 DWG. NO.: 104530DG  
SCALE: TO FIT APRVD: C

SHT. 1 OF 1