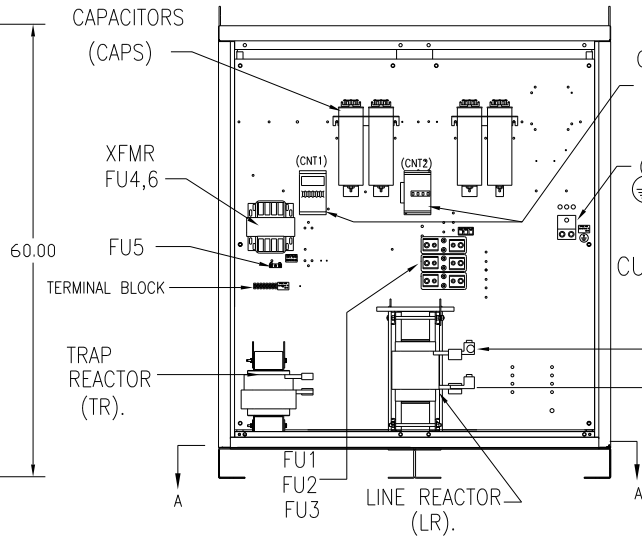
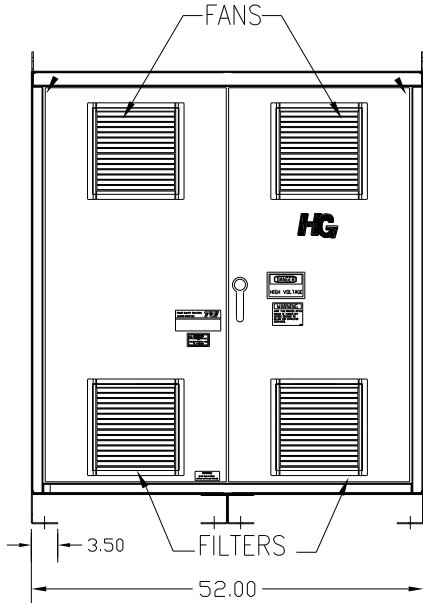
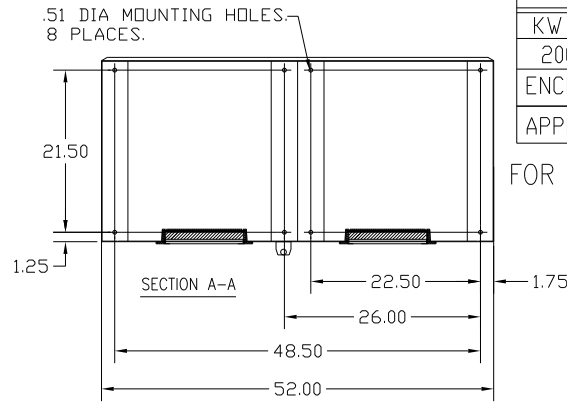
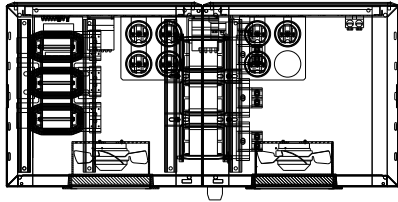
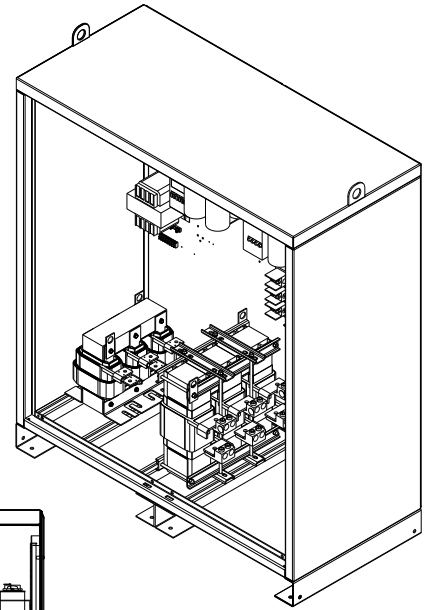


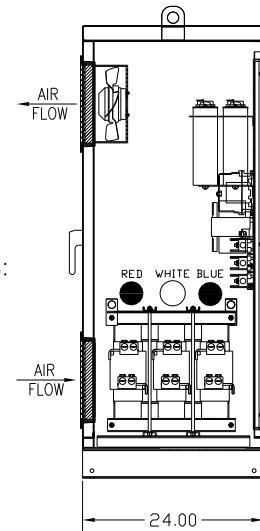
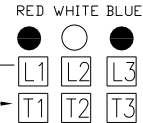
HG200LW01STC

UNIT SPECIFICATIONS:					
KW	HARMONIC	VOLT	HZ	PHASE	FLA
200	5TH	400	50	3	370
ENCLOSURE		NEMA 1			
APPROX.WT. LBS.		950			

FOR SCHEMATIC SEE DWG# 27703-1



CUSTOMER CONNECTIONS:



CUSTOMER CONNECTIONS:
WIRE RANGE-TWO 600MCM-2
TIGHTENING TORQUE 500 IN-LB.

GROUND LUG:
WIRE RANGE-TWO 600MCM-2
TIGHTENING TORQUE 500 IN-LB.

CUSTOMER IS RESPONSIBLE FOR INSTALLATION TO MEET ALL NATIONAL AND LOCAL ELECTRICAL CODES.

SYMBOL	TCI PART NUMBER
LR	KDRX32T
TR	KTR81L55HG
CAP1,-7 (20 KVAR)	KCAP20A6B
XFMR.	24389
Fu1, 2, 3	11175
Fu4,6	23820
Fu5	17569
CNT1	19246
CNT2	19245

TOLERANCES (EXCEPT AS NOTED)			
			DECIMAL
			.XX ± .03
			.XXX ± .01
			FRACTIONAL ± 1/32
			ANGULAR ± 1/2°
A	AS BUILT	3/22/2011	DSW
NO	REVISION	DATE	BY

TCI 7878 N. 86th STREET MILWAUKEE, WI 53224

TCI, HG7 Standard, 200kW 400/3/50, Type1, CNT.

DRN BY DSW DATE 3/22/2011 DWG NO B 104670DG SCALE -- APPRVD B SHT.1 OF 1