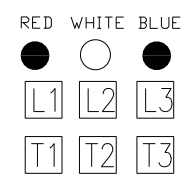
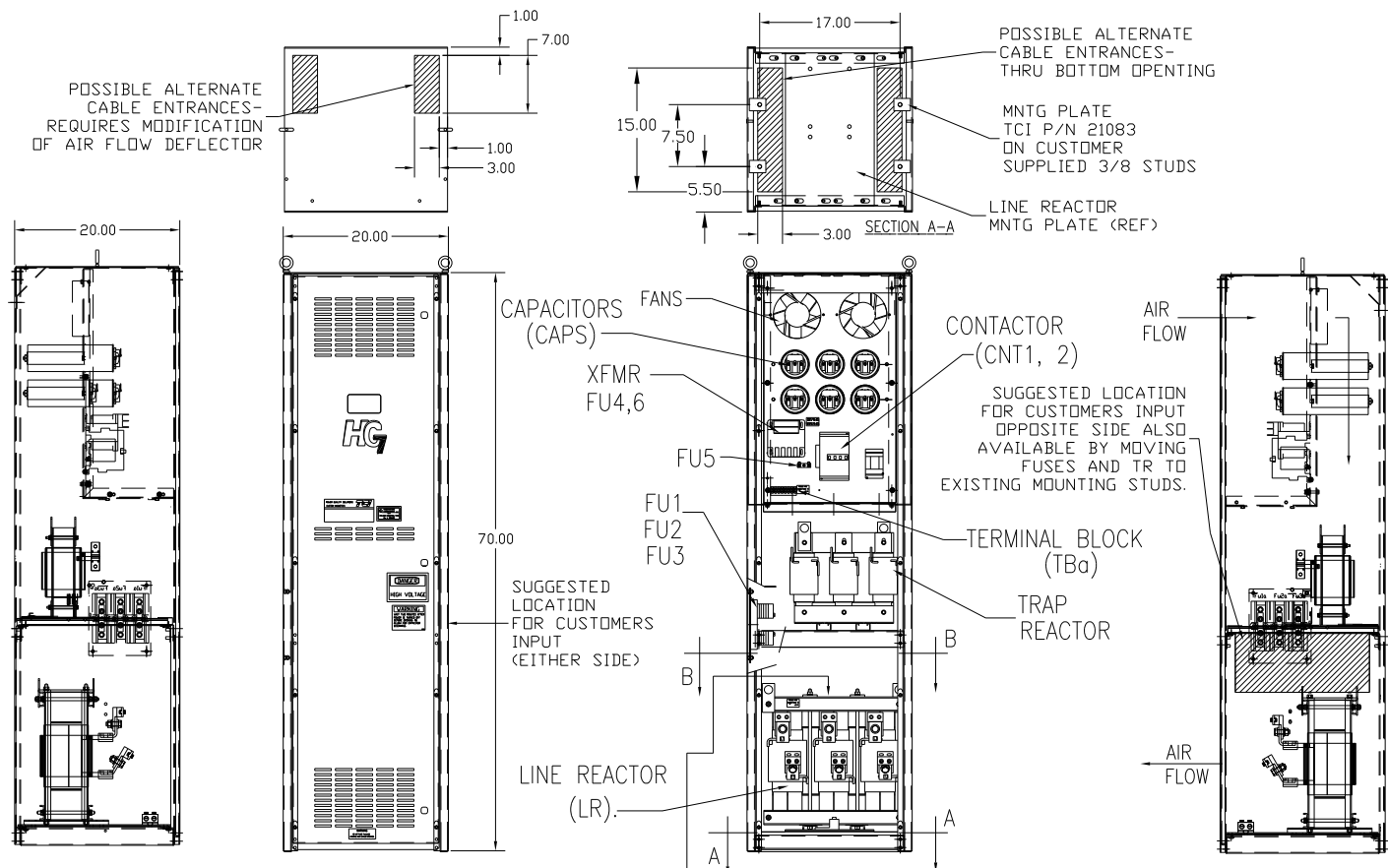
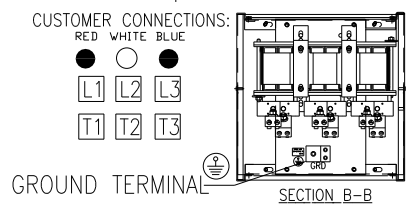


UNIT SPECIFICATIONS:					
KW	HARMONIC	VOLT	HZ	PHASE	FLA
160	5TH	400	50	3	320
ENCLOSURE		NEMA 1			
APPROX.WT. LBS.		575			



CUSTOMER CONNECTIONS:
 WIRE RANGE-TWO 350MCM-4
 TIGHTENING TORQUE 275 IN.-LB.

GROUND LUG:
 WIRE RANGE-TWO 350MCM-4
 TIGHTENING TORQUE 275 IN.-LB.



SYMBOL	TCI PART NUMBER
LR	KDRX31T
TR	KTR64L55HG
CAP1,2,3,4,5 (20 KVAR)	KCAP20A6B
CAP6 (10 KVAR)	KCAP10A6B
XFMR.	24393
Fu1, 2, 3	11170
Fu4,6	24073
Fu5	24012
CNT1	19245
CNT2	23048

SEE DRAWING# 27703-1 FOR SCHEMATIC

CUSTOMER IS RESPONSIBLE FOR INSTALLATION TO MEET ALL NATIONAL AND LOCAL ELECTRICAL CODES.

				TOLERANCES (EXCEPT AS NOTED)		7878 N. 86th STREET MILWAUKEE, WI 53224	
				DECIMAL		HG160LW01STC, 160KW 400/3/50, ENCLOSED, W/CNT	
				XX ± .03		DRN. BY DSW DATE 11/12/2010 DWG. NO. 104539DG	
				XXX ± .01		SCALE TO FIT	
				FRACTIONAL ± 1/32		APRVD C	
A AS BUILT		11/04/10		DSW		SHT. 1 OF 1	
NO REVISION		DATE		BY			
				ANGULAR ± 1/2°			