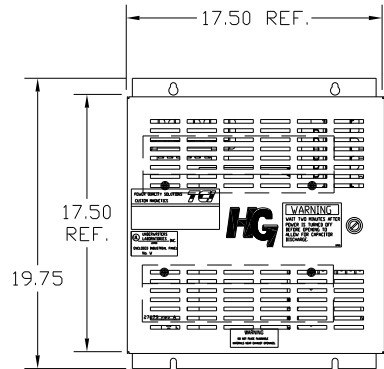
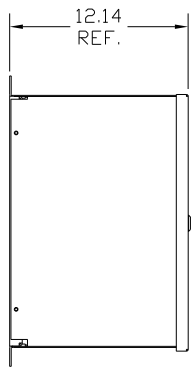


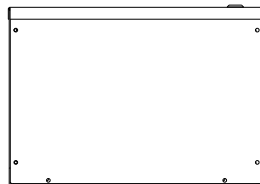
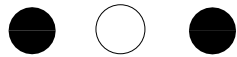
UNIT SPECIFICATIONS:					
KW	HARMONIC	VOLT	HZ	PHASE	FLA
11	5TH	400	50	3	24
ENCLOSURE		NEMA 1			
APPROX.WT. LBS.		84			

SYMBOL	TCI PART NUMBER
LR	KDRF31T
TR	KTR4L55HG
CAP, 1. (3 KVAR)	KCAP3A6A
CAP, 2.. (5 KVAR)	KCAP5A6A
XFMR.	24385
Fu1, 2, 3	22924
Fu4,6	13180
Fu5	13364
CNT	12434

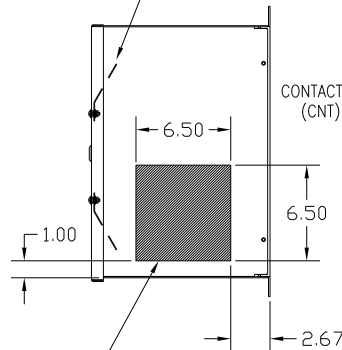
SEE DWG# 27703 FOR SCHEMATIC



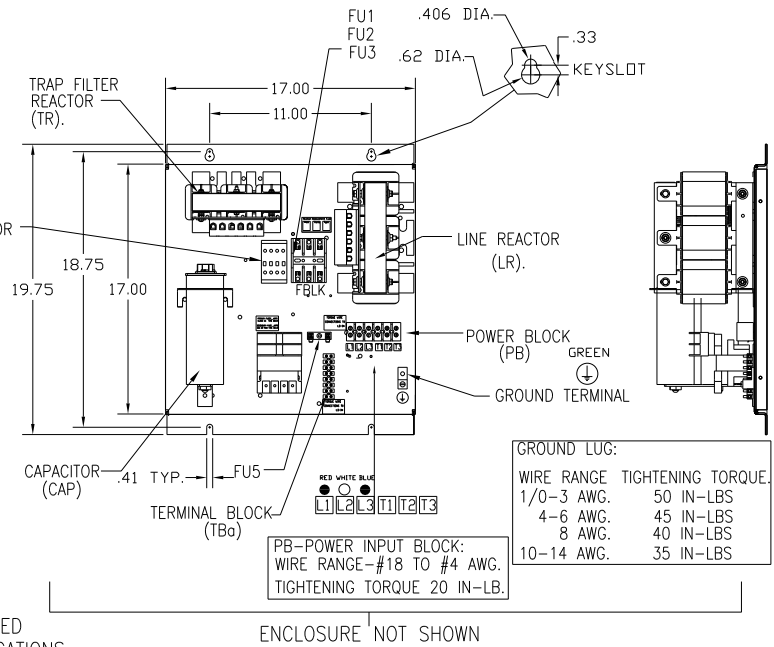
L1 L2 L3
RED WHITE BLUE



UL DOOR
MTD. SHIELD
2 PLACES.



HATCHED AREAS ARE SUGGESTED
CUSTOMER WIRE AND EXIT LOCATIONS
(BOTTOM ENTRANCE ALTERNATE-CONSULT TCI)



GROUND LUG:	
WIRE RANGE	TIGHTENING TORQUE
1/0-3 AWG.	50 IN-LBS
4-6 AWG.	45 IN-LBS
8 AWG.	40 IN-LBS
10-14 AWG.	35 IN-LBS

CUSTOMER IS RESPONSIBLE FOR INSTALLATION
TO MEET ALL NATIONAL AND LOCAL ELECTRICAL CODES.

		TOLERANCES (EXCEPT AS NOTED)		7878 N. 86th STREET MILWAUKEE, WI 53224 HG11LW01STC, 11KW 400/3/50, ENCLOSED.	
		DECIMAL			
		XX ± .03 XXX ± .01			
		FRACTIONAL ± 1/32			
A	AS BUILT	5/13/11	DSW	ANGULAR ± 1/2°	DRN. BY DSW
NO	REVISION	DATE	BY		DATE 5/13/11
				SCALE TO FIT	
				DWG. NO. 104668DG	
				SHT. 1 OF 1	