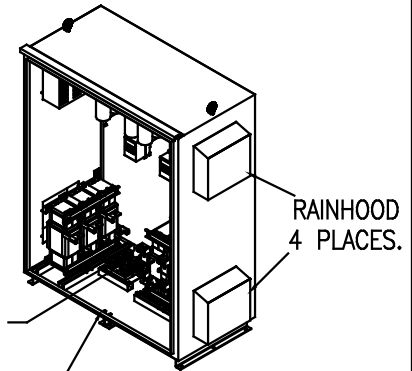
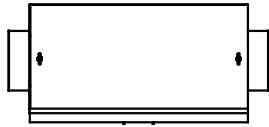
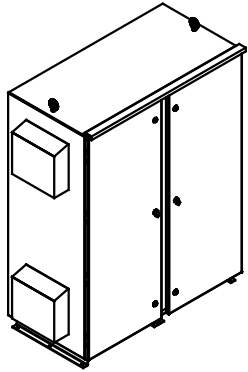


SEE DWG# 26964-2 FOR SCHEMATIC

CUSTOMER IS RESPONSIBLE FOR INSTALLATION TO MEET ALL NATIONAL AND LOCAL ELECTRICAL CODES.

NOTE: USE ONLY HUBS OR FITTINGS THAT COMPLY WITH UL514B FOR TYPE 3R ENCLOSURES.

UNIT SPECIFICATIONS:					
KVAR	HARMONIC	VOLT	HZ	PHASE	HP
150	5TH	600	60	3	500
ENCLOSURE		TYPE 3R- COLOR, WHITE			
APPROX.WT. LBS		1161			



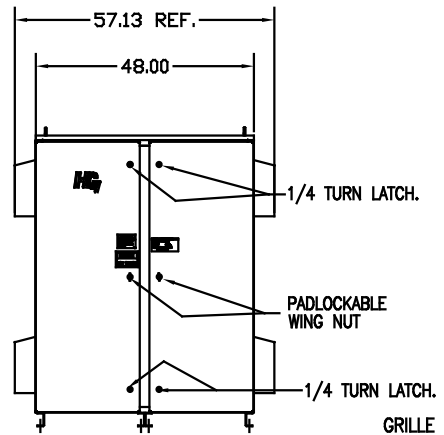
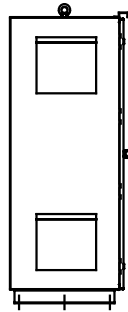
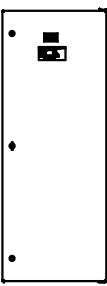
RAINHOOD  
4 PLACES.

FU1  
FBLK  
FU2  
FU3

REMOVEABLE  
CENTER CHANNEL

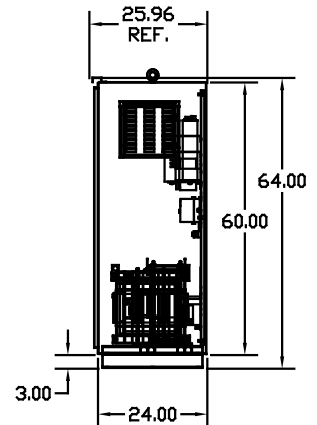
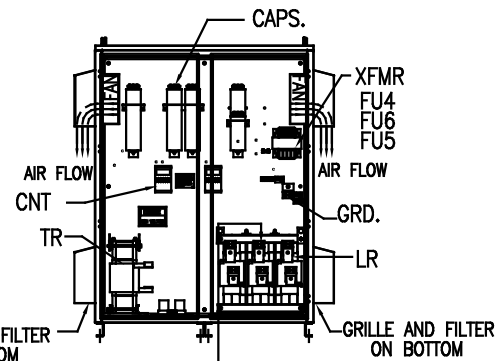
INSIDE  
DOOR

SIDE VIEW



FRONT VIEW  
WITH DOORS.

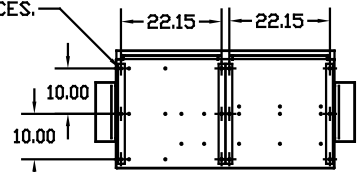
FRONT VIEW  
WITHOUT DOORS



SIDE VIEW

.50 DIA HOLES  
12 PLACES.

L1 L2 L3 T1 T2 T3  
SUGGESTED CUSTOMER WIRE ENTRY  
AND EXIT LOCATION



BOTTOM VIEW

CUSTOMER INPUT/OUTPUT  
CONNECTIONS:  
WIRE RANGE-TWO 600MCM-2  
TIGHTENING TORQUE 500 IN-LB.

GROUND LUG:  
WIRE RANGE-TWO 600MCM-2  
TIGHTENING TORQUE 500 IN-LB.

SYMBOL	TCI PART NUMBER
LR	KDRY41T
TR	KTR150C65HG
(20 KVAR) 7 PLACES.	KCAP20C6B
(10 KVAR) 1 PLACE.	KCAP10C6B
XFMR.	24389
Fu1,2,3	12462
Fu4,6	24390
Fu5	23977

NO	REVISION	DATE	BY	TOLERANCES EXCEPT AS NOTED	7878 N. 86th STREET MILWAUKEE, WI 53224
				.XX ±.12 .XXX ±.06 FRACTIONAL ± 1/32 DECIMAL ± 1/2"	
				DRAWN BY: DSW CHECKED BY: JAW DATE: 02/26/09 SCALE: TO FIT PART NO: HG500CW03ST, 500HP 600/3/60 UL TYPE 3R FILE NO: 103649DG SHT. 1 OF 1	