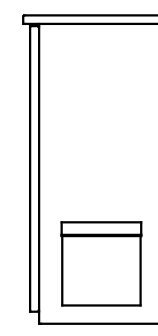
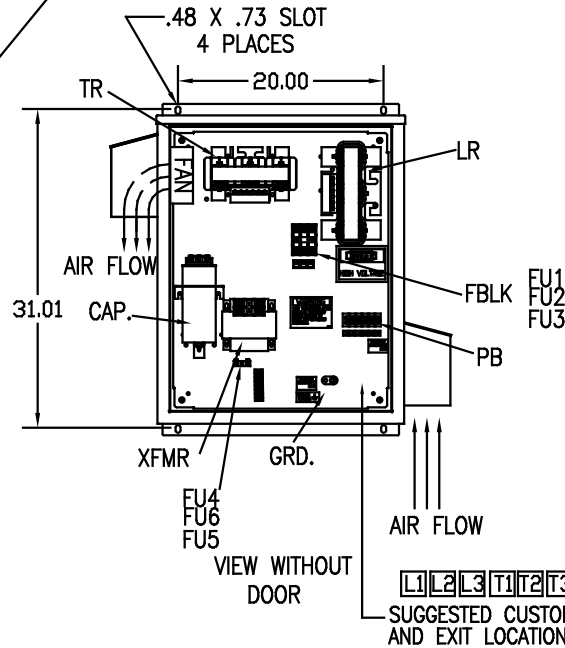
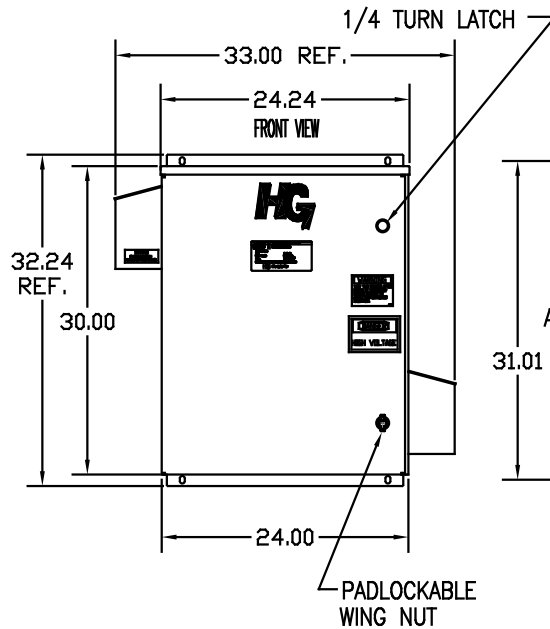
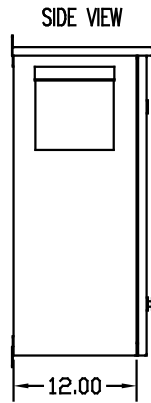
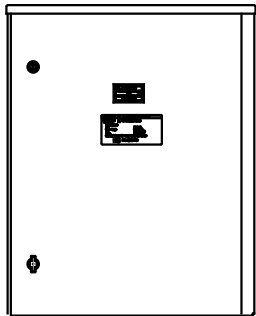
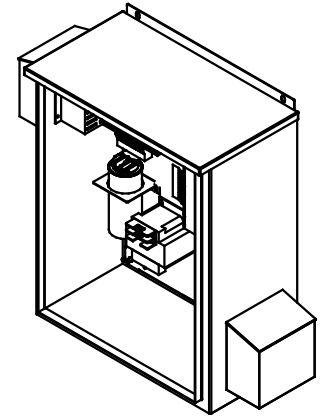
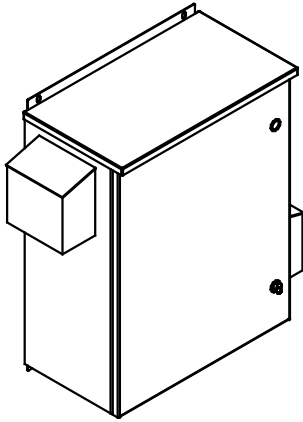


SEE DWG# 26972-2 FOR SCHEMATIC

CUSTOMER IS RESPONSIBLE FOR INSTALLATION
TO MEET ALL NATIONAL AND LOCAL ELECTRICAL CODES.

NOTE: USE ONLY HUBS OR FITTINGS THAT COMPLY
WITH UL514B FOR TYPE 3R ENCLOSURES.



UNIT SPECIFICATIONS:					
KVAR HARMONIC	VOLT	HZ	PHASE	HP	
10	5TH	600	60	3	30
ENCLOSURE	UL TYPE 3R				
COLOR	WHITE				
APPROX.WT. LBS.	154				

SYMBOL	TCI PART NUMBER
LR	KDRH41T
TR	KTR10C65HG
CAP. (10 KVAR) 1 PLACE.	KCAP10C6A
XFMR.	24381
Fu1, 2, 3	11263
Fu4,6	23405
Fu5	17567

PB--POWER INPUT BLOCK:
WIRE RANGE--#18 TO #4 AWG.
TIGHTENING TORQUE 20 IN.-LB.

GROUND LUG:
WIRE RANGE--1/0 TO #14 AWG.
TIGHTENING TORQUE 200 IN.-LB.

NO	REVISION	DATE	BY	TOLERANCES EXCEPT AS NOTED: DIMEN. XX ±.12 .XXX±.06 FRACTIONAL ± 1/32 ANGULAR ± 1/2°	SCALE TO FIT	DATE 2/24/09	APPROV. C	DESIGNER DSW	DWG. NO. 103635DG	DATE 2/24/09	SCALE TO FIT	APPROV. C	DWG. NO. 103635DG	SHEET 1 OF 1

TCI 7878 N. 86th STREET
MILWAUKEE, WI 53224

HG30CW03ST, 30HP
600/3/60 UL TYPE 3R