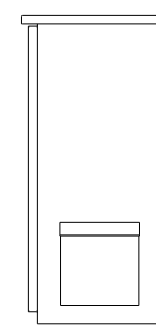
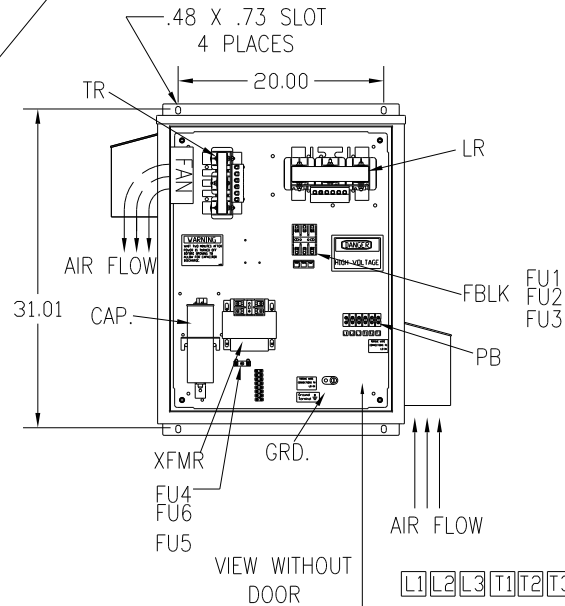
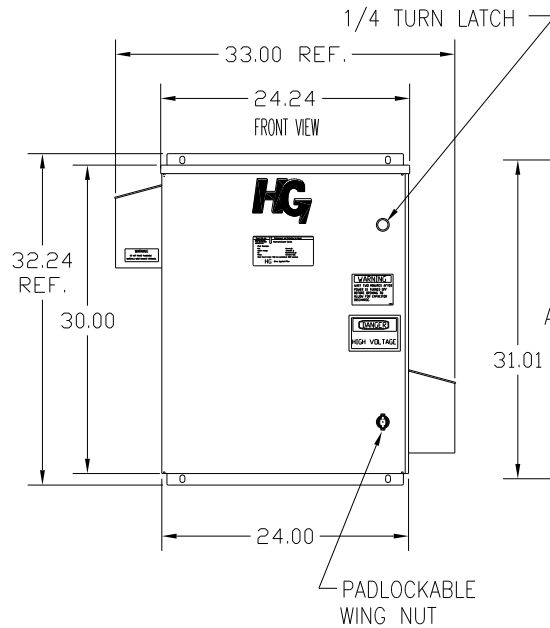
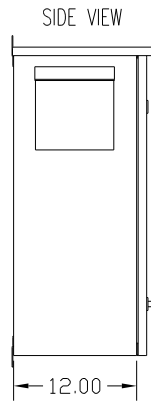
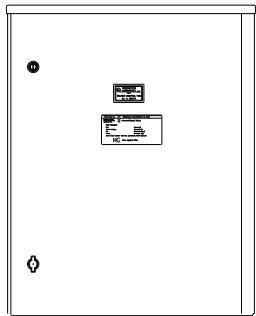
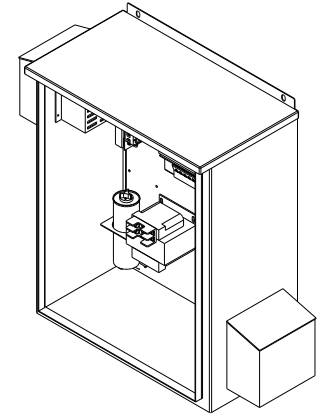
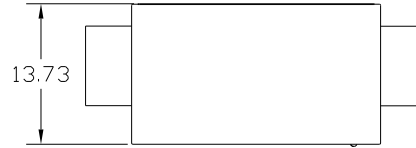
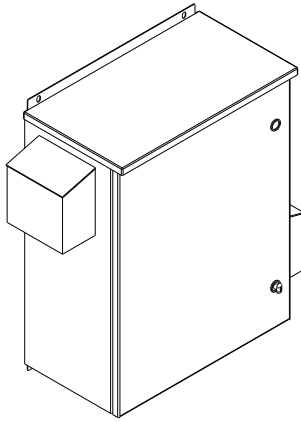


SEE DWG# 26972-2 FOR SCHEMATIC

CUSTOMER IS RESPONSIBLE FOR INSTALLATION  
TO MEET ALL NATIONAL AND LOCAL ELECTRICAL CODES.

NOTE: USE ONLY HUBS OR FITTINGS THAT COMPLY  
WITH UL514B FOR TYPE 3R ENCLOSURES.




UNIT SPECIFICATIONS:					
KVAR HARMONIC	VOLT	HZ	PHASE	HP	
5	5TH	600	60	3	15
ENCLOSURE	UL TYPE 3R				
COLOR	WHITE				
APPROX.WT. LBS.	135				

SYMBOL	TCI PART NUMBER
LR	KDRF 41T
TR	KTR5C65HG
CAP. (5 KVAR), 1 PLACE.	KCAP5C6A
XFMR.	24381
Fu1, 2, 3	11263
Fu4,6	23405
Fu5	17567

PB--POWER INPUT BLOCK:  
WIRE RANGE--#18 TO #4 AWG.  
TIGHTENING TORQUE 20 IN--LB.

GROUND LUG:  
WIRE RANGE--1/0 TO #14 AWG.  
TIGHTENING TORQUE 200 IN--LB.

L1 L2 L3 T1 T2 T3  
SUGGESTED CUSTOMER WIRE ENTRY  
AND EXIT LOCATION

TOLERANCES EXCEPT AS NOTED				 7878 N. 86th STREET MILWAUKEE, WI 53224
DECIMAL	FRACTIONAL	ANGULAR		
.XX ±.12				HG15CW03ST, 15HP 600/3/60 UL TYPE 3R
.XXX ±.06				
	± 1/32			DRW. BY DSW DATE 2/24/09 DWG. NO. 103634DG SCALE TO FIT APPR. C
	± 1/2°			
NO	REVISION	DATE	BY	SHT. 1 OF 1