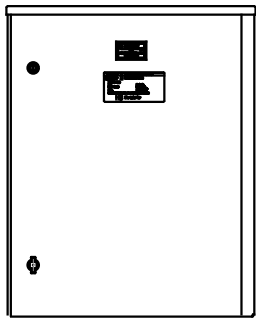
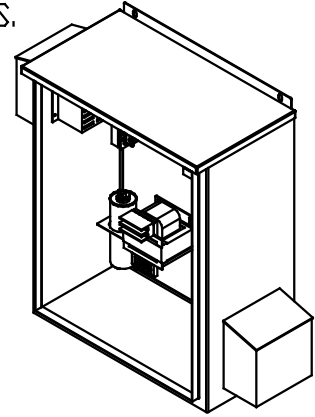
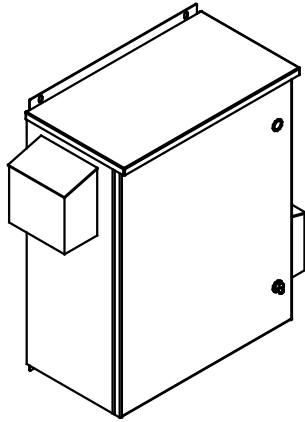


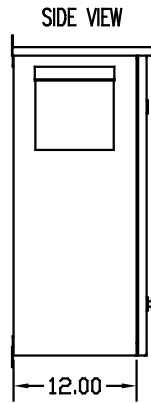
SEE DWG# 26756 FOR SCHEMATIC

CUSTOMER IS RESPONSIBLE FOR INSTALLATION TO MEET ALL NATIONAL AND LOCAL ELECTRICAL CODES.

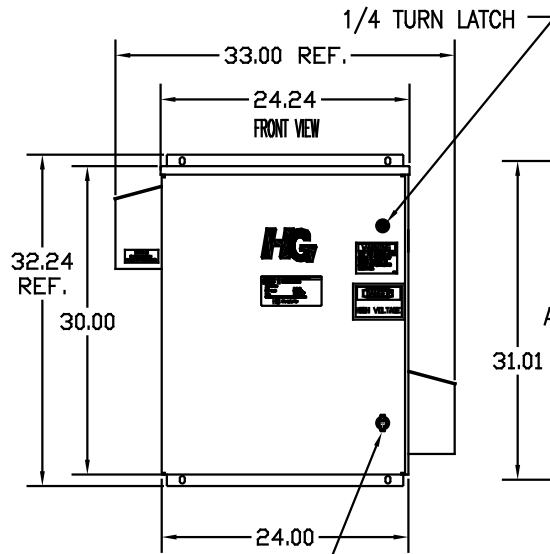
NOTE: USE ONLY HUBS OR FITTINGS THAT COMPLY WITH UL514B FOR TYPE 3R ENCLOSURES.



INSIDE DOOR



SIDE VIEW



1/4 TURN LATCH

33.00 REF.

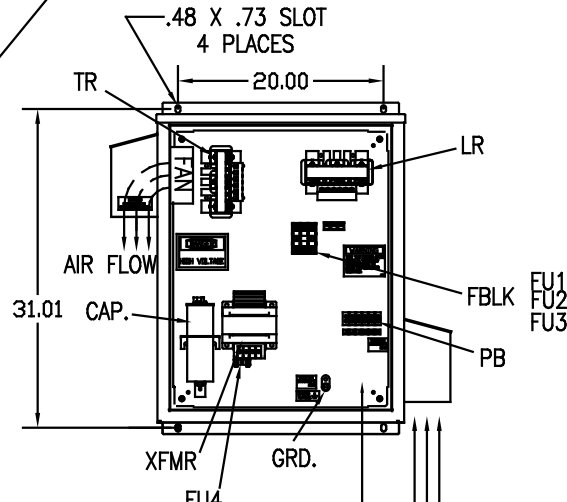
24.24 FRONT VIEW

32.24 REF.

30.00

24.00

PADLOCKABLE WING NUT



TR

.48 X .73 SLOT 4 PLACES

20.00

LR

AIR FLOW

CAP.

FBLK

FU1

FU2

FU3

PB

XFM

GRD.

FU4

FU6

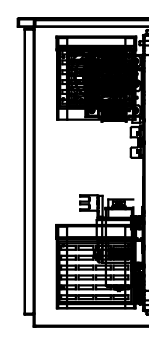
FU5

FRONT VIEW WITHOUT DOOR

AIR FLOW

L1 L2 L3 T1 T2 T3

SUGGESTED CUSTOMER WIRE ENTRY AND EXIT LOCATION



UNIT SPECIFICATIONS:						
KVAR	HARMONIC	VOLT	HZ	PHASE	HP	
3	5TH	480	60	3	7.5	
ENCLOSURE		UL TYPE 3R				
COLOR		WHITE				
APPROX.WT. LBS.		105				

SYMBOL	TCI PART NUMBER
LR	KDRC1T
TR	KTR3A65HG
CAP. (3 KVAR)	KCAP3A6A
XFM.	23896
Fu1, 2, 3	11262
Fu4,6	24009
Fu5	17567

PB-POWER INPUT BLOCK:  
WIRE RANGE-#18 TO #4 AWG.  
TIGHTENING TORQUE 20 IN-LB.

GROUND LUG:  
WIRE RANGE-1/0 TO #14 AWG.  
TIGHTENING TORQUE 200 IN-LB.

NO	REVISION	DATE	BY	TOLERANCES EXCEPT AS NOTED: DIMEN. XX ±.12 .XXX±.06 FRACTIONAL ± 1/32 ANGULAR ± 1/2°	SCALE TO FIT	DATE 8/26/08	APPROV. C	DWG. NO. 103610DG	SHT. 1 OF 1

**TCI** 7878 N. 86th STREET MILWAUKEE, WI 53224

HG8AW03ST, 7.5HP  
480/3/60 UL TYPE 3R