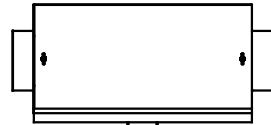
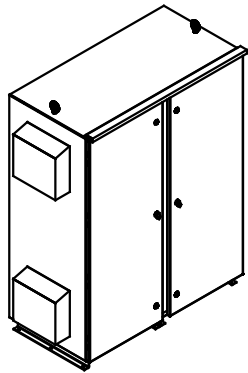


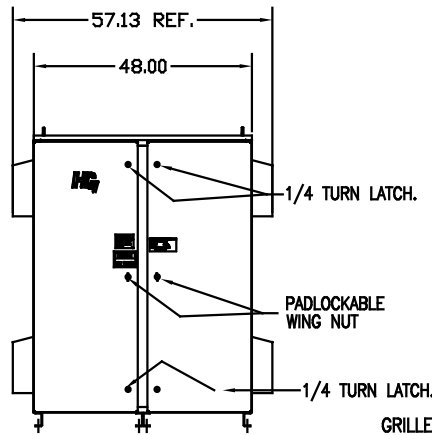
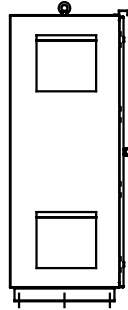
SEE DWG# 26757 FOR SCHEMATIC

CUSTOMER IS RESPONSIBLE FOR INSTALLATION TO MEET ALL NATIONAL AND LOCAL ELECTRICAL CODES.

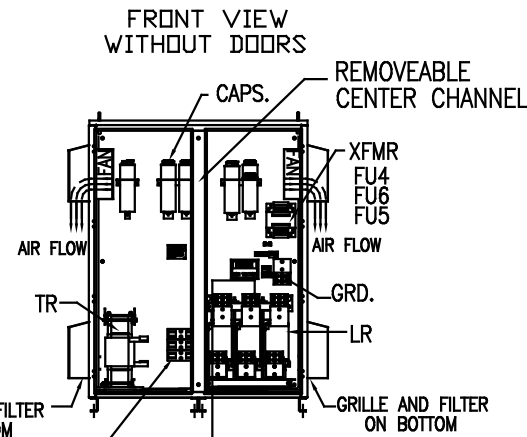
NOTE: USE ONLY HUBS OR FITTINGS THAT COMPLY WITH UL514B FOR TYPE 3R ENCLOSURES.



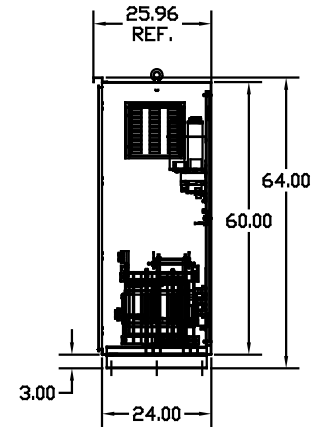
SIDE VIEW



FRONT VIEW WITH DOORS.



FRONT VIEW WITHOUT DOORS

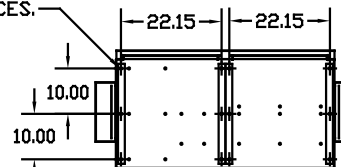


SIDE VIEW

SYMBOL	TCI PART NUMBER
LR	KDRY1T
TR	KTR180A65HG
CAP.1-9 (20 KVAR)	KCAP20A6B
XFMR.	24113
Fu1,2,3	12596
Fu4,6	14106
Fu5	24110

GROUND LUG:
WIRE RANGE-THREE 600MCM-2
TIGHTENING TORQUE 375 IN.-LB.

.50 DIA HOLES
12 PLACES.
SUGGESTED CUSTOMER WIRE ENTRY AND EXIT LOCATION



BOTTOM VIEW

CUSTOMER CONNECTIONS:
WIRE RANGE-THREE 600MCM-2
TIGHTENING TORQUE 375 IN.-LB.

UNIT SPECIFICATIONS:

KVAR	HARMONIC	VOLT	HZ	PHASE	HP
180	5TH	480	60	3	600
ENCLOSURE		TYPE 3R- COLOR, WHITE			
APPROX.WT. LBS		1224			

NO	REVISION	DATE	BY	TOLERANCES EXCEPT AS NOTED DECIMAL	SCALE
				.XX ±.12 .XXX±.06	TO FIT
				FRACTIONAL ± 1/32	
				± 1/2"	

TCI 7878 N. 86th STREET
MILWAUKEE, WI 53224

HG600AW03ST, 600HP
480/3/60 UL TYPE 3R

DESIGNED BY: JWS DATE: 9/18/08 DRAWN BY: D 103630DG
SCALE: TO FIT