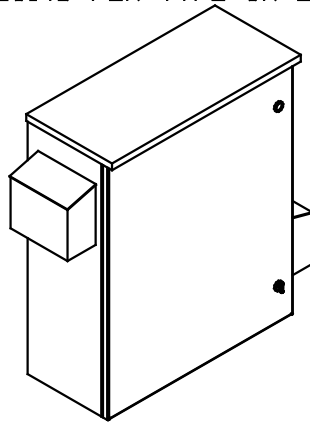


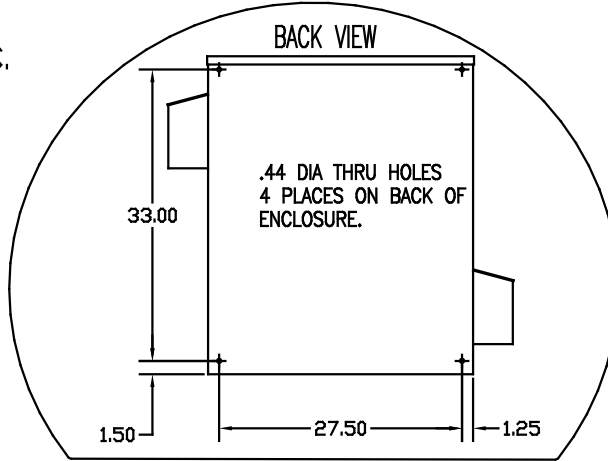
SEE DWG# 26756 FOR SCHEMATIC

CUSTOMER IS RESPONSIBLE FOR INSTALLATION TO MEET ALL NATIONAL AND LOCAL ELECTRICAL CODES.

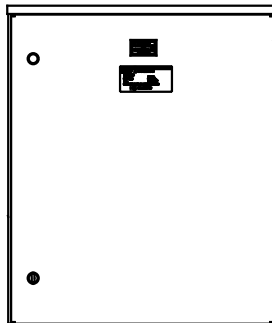
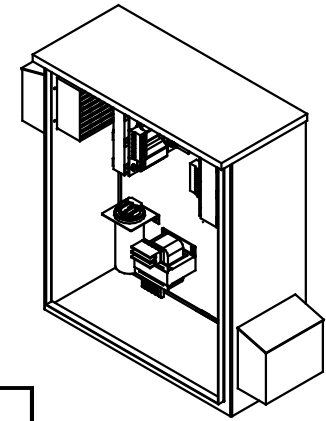
NOTE: USE ONLY HUBS OR FITTINGS THAT COMPLY WITH UL514B FOR TYPE 3R ENCLOSURES.



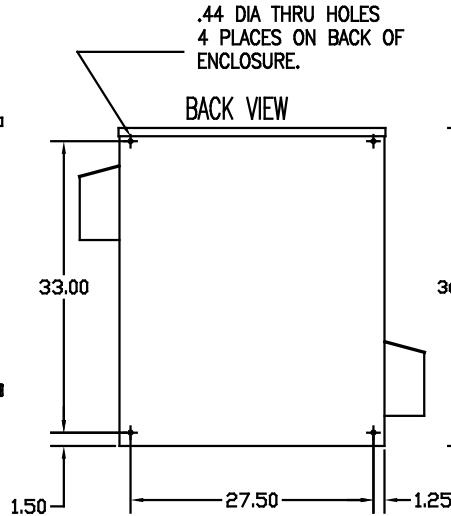
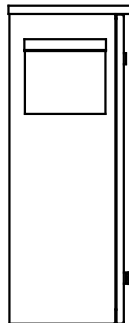
SIDE VIEW



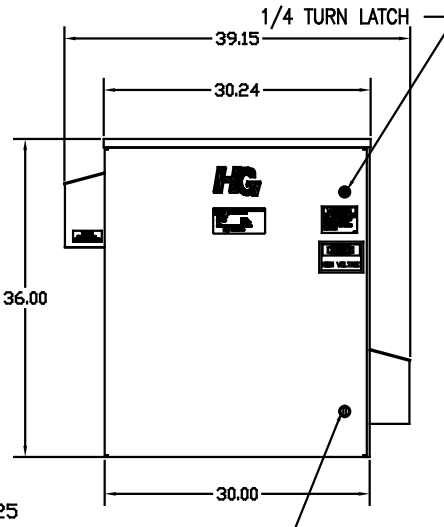
BACK VIEW



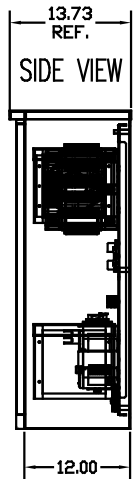
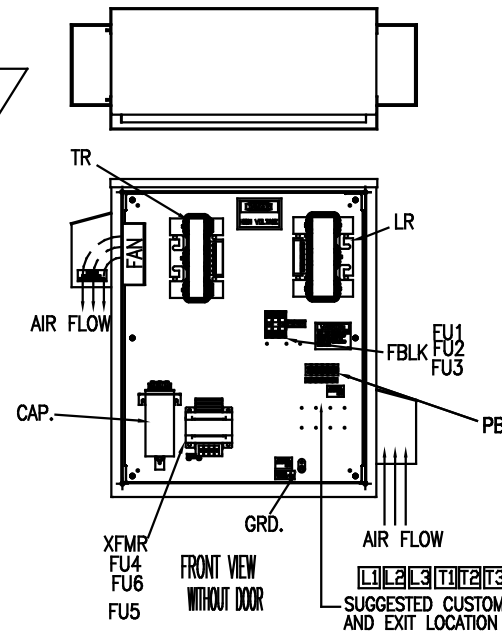
FRONT VIEW



BACK VIEW



FRONT VIEW WITHOUT DOOR



SIDE VIEW

UNIT SPECIFICATIONS:

KVAR	HARMONIC	VOLT	HZ	PHASE	HP
15	5TH	480	60	3	50
ENCLOSURE	UL TYPE 3R				
COLOR	WHITE				
APPROX.WT. LBS.	229				

SYMBOL	TCI PART NUMBER
LR	KDRG1T
TR	KTR15A65HG
CAP (15 KVAR)	KCAP15A6B
XFMR.	23896
Fu1, 2, 3	11307
Fu4,6	24009
Fu5	17567

PB-POWER INPUT BLOCK:
 1 AWG thru 4 AWG 35 IN-LBS. MAX.
 6 AWG thru 14 AWG 30 IN-LBS. MAX.
 16 AWG thru 20 AWG 25 IN-LBS. MAX.
 22 AWG 20 IN-LBS. MAX.

GROUND LUG:
 WIRE RANGE-1/0 TO #14 AWG.
 TIGHTENING TORQUE 200 IN-LB.

NO	REVISION	DATE	BY	TOLERANCES UNLESS AS NOTED: DIMEN. XX ±.12 .XXX±.06 FRACTIOANL ± 1/32 ANGULAR ± 1/2°	DATE DSW 08/26/08	SCALE TO FIT	DATE 08/26/08	SCALE C	DATE 08/26/08	SCALE 103617DG	DATE 08/26/08	SCALE SHT.1 OF 1

TCI 7878 N. 86th STREET MILWAUKEE, WI 53224

HG50AW03ST, 50HP
 480/3/60 UL TYPE 3R