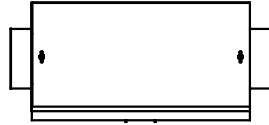
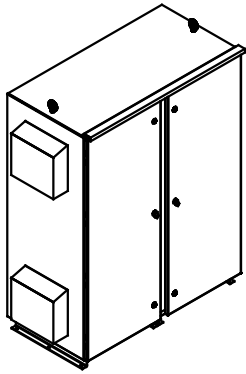


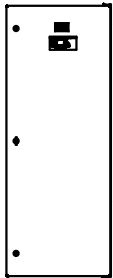
SEE DWG# 26757 FOR SCHEMATIC

CUSTOMER IS RESPONSIBLE FOR INSTALLATION
TO MEET ALL NATIONAL AND LOCAL ELECTRICAL CODES.

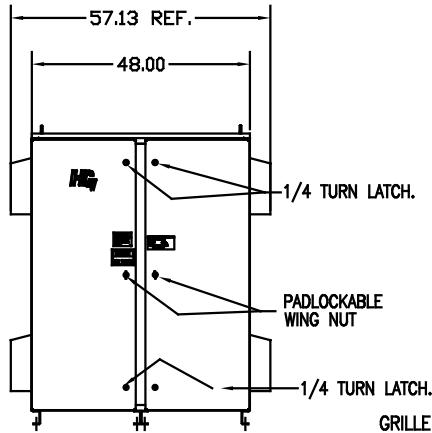
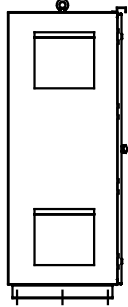
NOTE: USE ONLY HUBS OR FITTINGS THAT COMPLY
WITH UL514B FOR TYPE 3R ENCLOSURES.



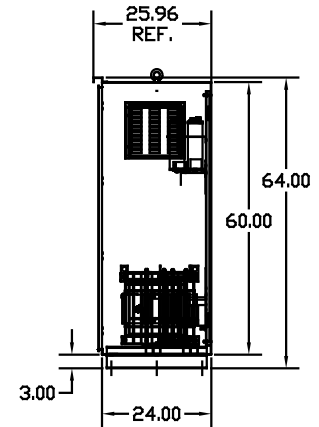
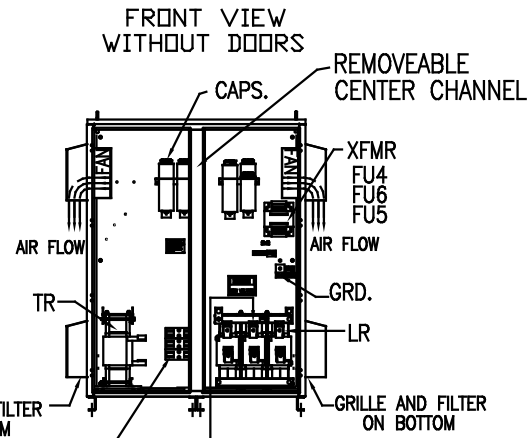
INSIDE
DOOR



SIDE VIEW



FRONT VIEW
WITH DOORS.



SIDE VIEW

.50 DIA HOLES
12 PLACES.



BOTTOM VIEW

GROUND LUG:
WIRE RANGE-TWO 600MCM-2
TIGHTENING TORQUE 500 IN-LB.

**CUSTOMER INPUT/OUTPUT
CONNECTIONS:**
WIRE RANGE-TWO 600MCM-2
TIGHTENING TORQUE 500 IN-LB.

SYMBOL	TCI PART NUMBER
LR	KDRX4T
TR	KTR150A65HG
CAP.1,2,3,4,5,6,7 (20 KVAR)	KCAP20A6B
CAP.8 (10 KVAR)	KCAP10A6B
XFMR.	24113
Fu1,2,3	13232
Fu4,6	14106
Fu5	24110

UNIT SPECIFICATIONS:

KVAR	HARMONIC	VOLT	HZ	PHASE	HP
150	5TH	480	60	3	500
ENCLOSURE		TYPE 3R- COLOR, WHITE			
APPROX.WT. LBS		1000			

TOLERANCES EXCEPT AS NOTED		TCI 7878 N. 86th STREET MILWAUKEE, WI 53224
.XX ±.12	.XXX±.06	
FRACTIONAL ± 1/32		HG500AW03ST, 500HP 480/3/60 UL TYPE 3R
DESIGNED BY DSW	DATE 9/18/08	DRAWING NO. 103629DG
SCALE TO FIT	APPROVED BY D	SHEET 1 OF 1

NO.	REVISION	DATE	BY