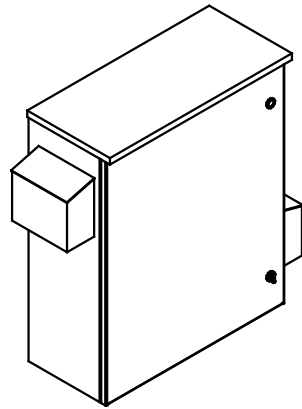


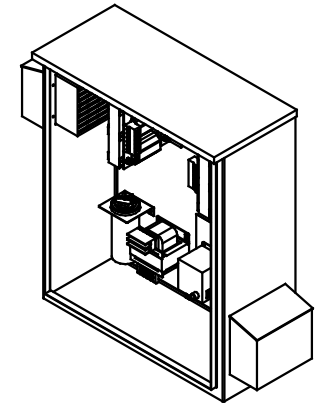
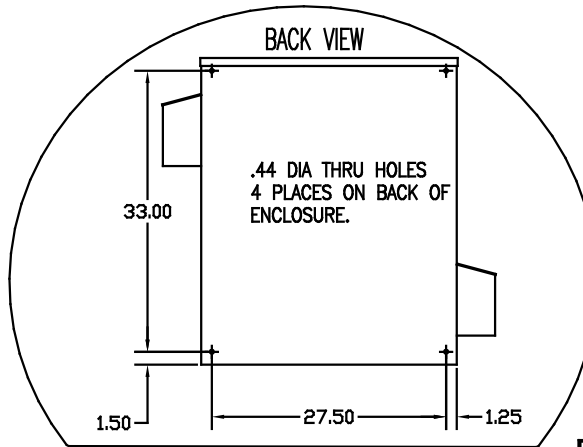
SEE DWG# 26756 FOR SCHEMATIC

CUSTOMER IS RESPONSIBLE FOR INSTALLATION TO MEET ALL NATIONAL AND LOCAL ELECTRICAL CODES.

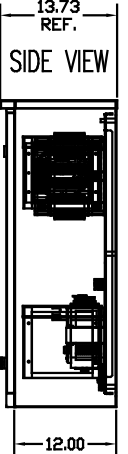
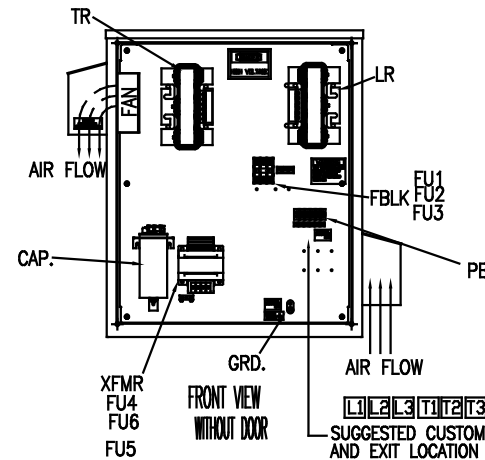
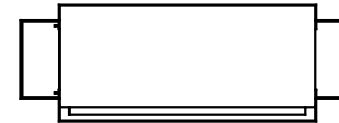
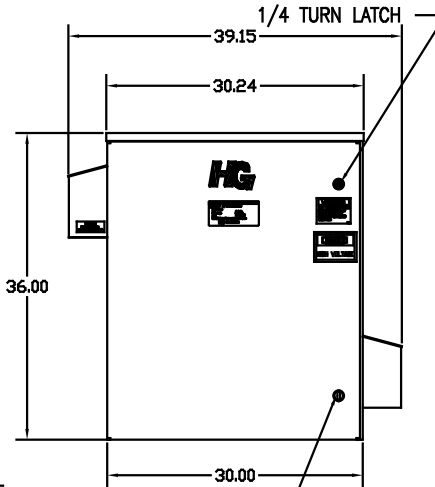
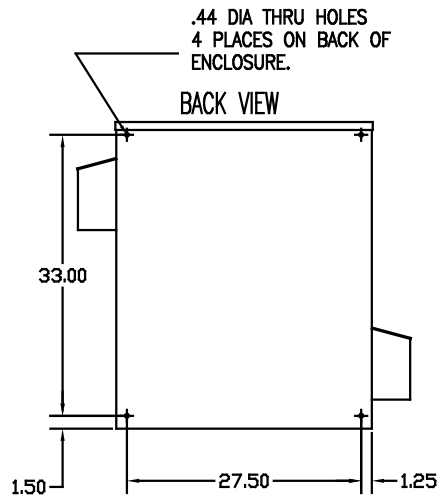
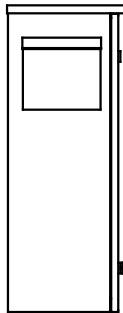
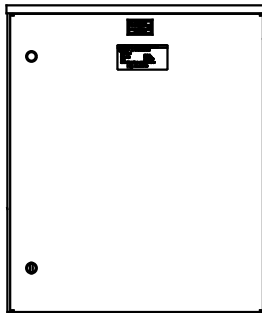
NOTE: USE ONLY HUBS OR FITTINGS THAT COMPLY WITH UL514B FOR TYPE 3R ENCLOSURES.



SIDE VIEW



13.73 REF.  
SIDE VIEW



UNIT SPECIFICATIONS:					
KVAR	HARMONIC	VOLT	HZ	PHASE	HP
15	5TH	480	60	3	40
ENCLOSURE	UL TYPE 3R				
COLOR	WHITE				
APPROX.WT. LBS.	220				

SYMBOL	TCI PART NUMBER
LR	KDRI1T
TR	KTR15A65HG
CAP (15 KVAR)	KCAP15A6B
XFMR.	23896
Fu1, 2, 3	11307
Fu4,6	24009
Fu5	17567

**PB-POWER INPUT BLOCK:**  
 1 AWG thru 4 AWG 35 IN-LBS. MAX.  
 6 AWG thru 14 AWG 30 IN-LBS. MAX.  
 16 AWG thru 20 AWG 25 IN-LBS. MAX.  
 22 AWG 20 IN-LBS. MAX.

**GROUND LUG:**  
 WIRE RANGE-1/0 TO #14 AWG.  
 TIGHTENING TORQUE 200 IN-LB.

NO	REVISION	DATE	BY	TOLERANCES EXCEPT AS NOTED	SCALE	APPROVAL	DATE	DWG. NO.	REV. NO.
				DECIMAL .XX ±.12 .XXX±.03	TO FIT		08/26/08	103616DG	1
				FRACTIONAL ± 1/32					
				ANGULAR ± 1/2°					

**TCI** 7878 N. 86th STREET  
MILWAUKEE, WI 53224

HG40AW03ST, 40HP  
480/3/60 UL TYPE 3R

DWG. BY DSW DATE 08/26/08 DWG. NO. 103616DG  
SCALE TO FIT APPROVAL C