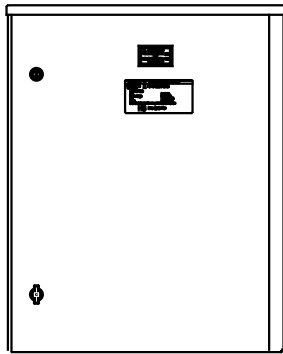
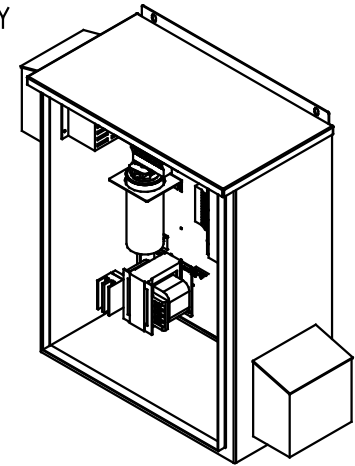
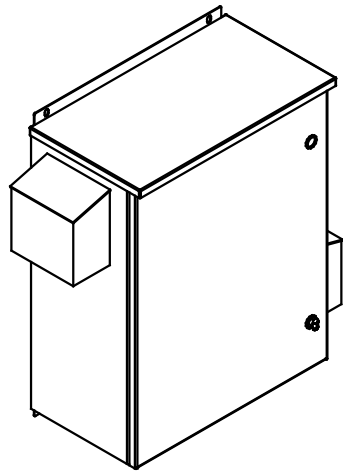


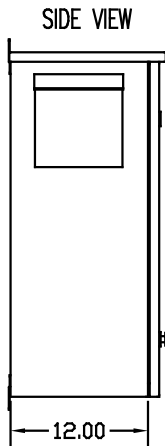
SEE DWG# 26756 FOR SCHEMATIC

CUSTOMER IS RESPONSIBLE FOR INSTALLATION TO MEET ALL NATIONAL AND LOCAL ELECTRICAL CODES.

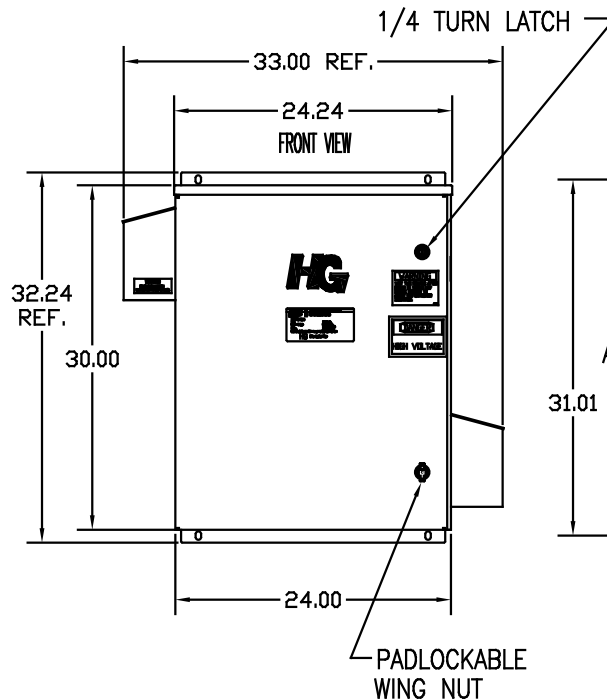
NOTE: USE ONLY HUBS OR FITTINGS THAT COMPLY WITH UL514B FOR TYPE 3R ENCLOSURES.



INSIDE DOOR



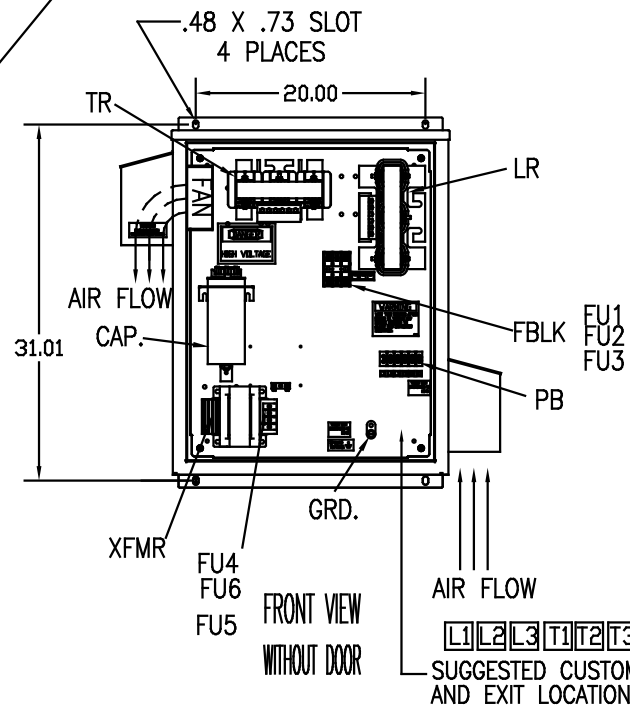
SIDE VIEW



1/4 TURN LATCH

FRONT VIEW

PADLOCKABLE WING NUT



FRONT VIEW WITHOUT DOOR

AIR FLOW

SUGGESTED CUSTOMER WIRE ENTRY AND EXIT LOCATION

UNIT SPECIFICATIONS:					
KVAR	HARMONIC	VOLT	HZ	PHASE	HP
10	5TH	480	60	3	30
ENCLOSURE		UL TYPE 3R			
COLOR		WHITE			
APPROX. WT. LBS.		150			

SYMBOL	TCI PART NUMBER
LR	KDRH1T
TR	KTR10A65HG
CAP (10 KVAR)	KCAP10A6B
XFMR.	23896
Fu1, 2, 3	11307
Fu4,6	24009
Fu5	17567

PB-POWER INPUT BLOCK:
WIRE RANGE-#18 TO #4 AWG.
TIGHTENING TORQUE 20 IN.-LB.

GROUND LUG:
WIRE RANGE-1/0 TO #14 AWG.
TIGHTENING TORQUE 200 IN.-LB.

TOLERANCES EXCEPT AS NOTED:				TCI 7878 N. 86th STREET MILWAUKEE, WI 53224	
				HG30AW03ST, 30HP 480/3/60 UL TYPE 3R	
				DRW BY DSW	DATE 08/26/08
				SCALE TO FIT	APPV C 103615DG
NO	REVISION	DATE	BY		SHT. 1 OF 1