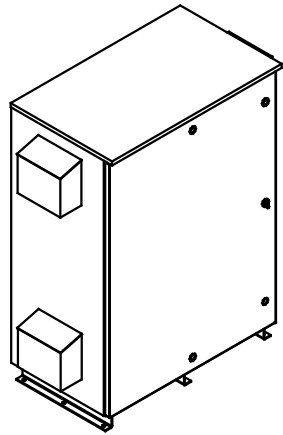


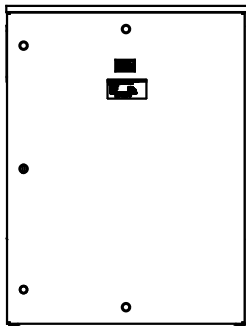
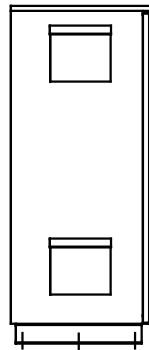
SEE DWG# 26757 FOR SCHEMATIC

CUSTOMER IS RESPONSIBLE FOR INSTALLATION
TO MEET ALL NATIONAL AND LOCAL ELECTRICAL CODES.

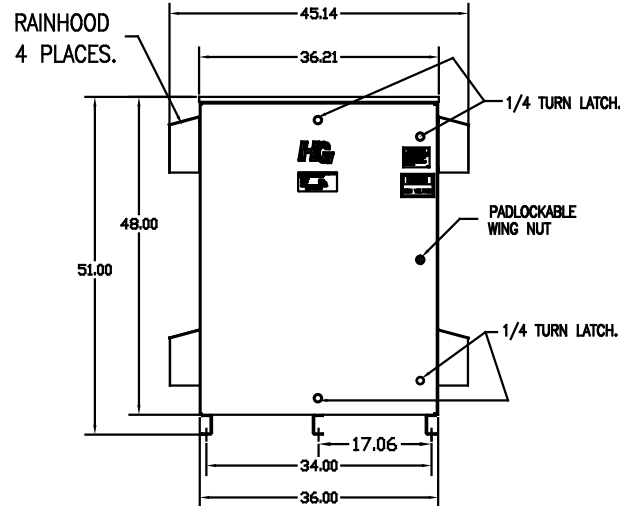
NOTE: USE ONLY HUBS OR FITTINGS THAT COMPLY
WITH UL514B FOR TYPE 3R ENCLOSURES.



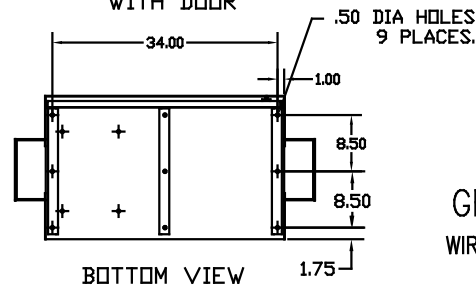
SIDE VIEW



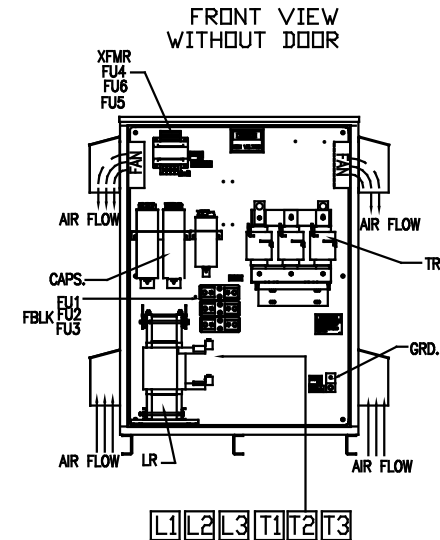
INSIDE DOOR



FRONT VIEW
WITH DOOR



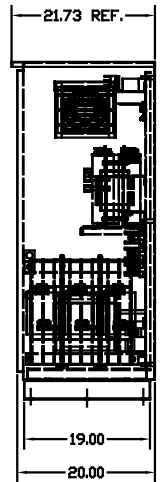
BOTTOM VIEW



FRONT VIEW
WITHOUT DOOR

L1 L2 L3 T1 T2 T3

SUGGESTED CUSTOMER WIRE ENTRY
AND EXIT LOCATION



SYMBOL	TCI PART NUMBER
LR	KDRX1T
TR	KTR90A65HG
CAP1 ,2 ,3 ,4. (20 KVAR)	KCAP20A6B
CAP5. (10 KVAR)	KCAP10A6B
XFMR.	23899
Fu1a;2a;3a	11175
Fu4,6	14106
Fu5	23977

GROUND LUG:
WIRE RANGE—ONE 600MCM—4
TWO 250MCM—1/0
TIGHTENING TORQUE 500 IN—LB.

CUSTOMER CONNECTIONS:
WIRE RANGE—TWO 350MCM—4
TIGHTENING TORQUE 275 IN—LB.

UNIT SPECIFICATIONS:

KVAR	HARMONIC	VOLT	HZ	PHASE	HP
90	5TH	480	60	3	300
ENCLOSURE		TYPE 3R—COLOR WHITE			
APPROX.WT. LBS.		615			

NO	REVISION	DATE	BY	TOLERANCES EXCEPT AS NOTED: DECIMAL XX ±.12 .XXX±.06 FRACTIONAL ± 1/32 ANGULAR ± 1/2°	DATE	SCALE	APPROVAL	DATE	SCALE	APPROVAL

7878 N. 86th STREET
MILWAUKEE, WI 53224

HG300AW03ST, 300HP
480/3/60 UL TYPE 3R

103625DG
SHT. 1 OF 1