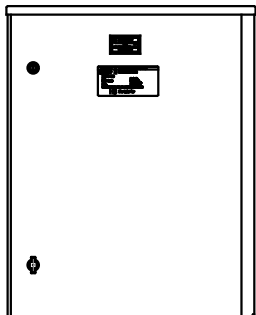
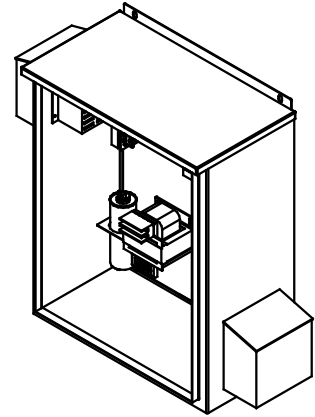
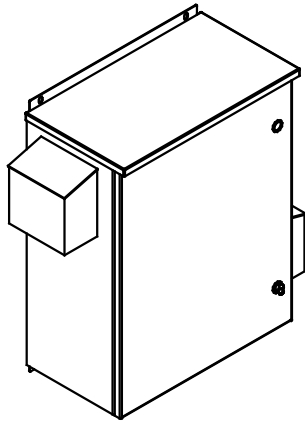


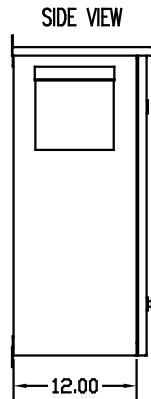
SEE DWG# 26756 FOR SCHEMATIC

CUSTOMER IS RESPONSIBLE FOR INSTALLATION TO MEET ALL NATIONAL AND LOCAL ELECTRICAL CODES.

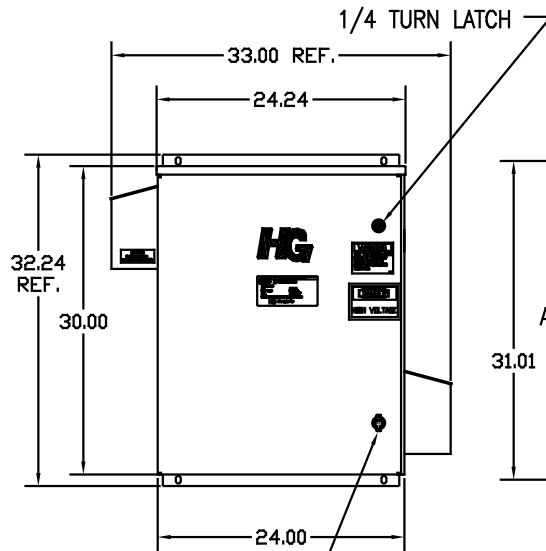
NOTE: USE ONLY HUBS OR FITTINGS THAT COMPLY WITH UL514B FOR TYPE 3R ENCLOSURES.



INSIDE DOOR

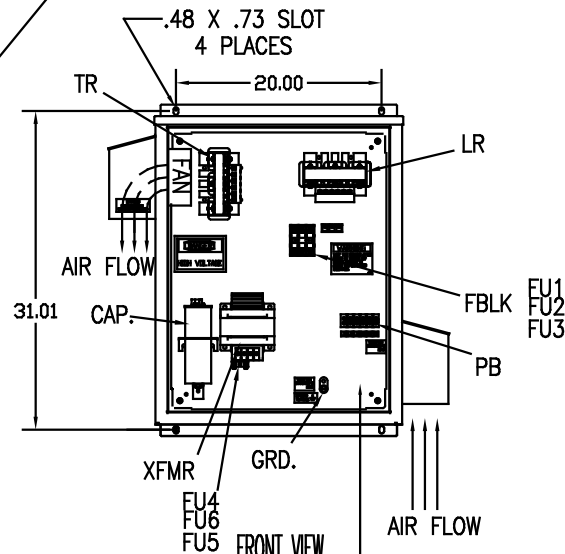


SIDE VIEW

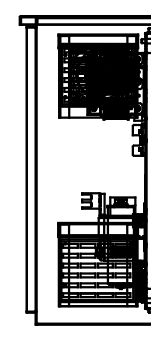


1/4 TURN LATCH

PADLOCKABLE WING NUT



FRONT VIEW WITHOUT DOOR



UNIT SPECIFICATIONS:					
KVAR HARMONIC	VOLT	HZ	PHASE	HP	
5	5TH	480	60	3	15
ENCLOSURE	UL TYPE 3R				
COLOR	WHITE				
APPROX.WT. LBS.	125				

SYMBOL	TCI PART NUMBER
LR	KDRFIT
TR	KTR5A65HG
CAP. (5 KVAR)	KCAP5A6A
XFMR.	23896
Fu1, 2, 3	15752
Fu4,6	24009
Fu5	17567

1 2 3 T1 T2 T3  
SUGGESTED CUSTOMER WIRE ENTRY AND EXIT LOCATION

PB-POWER INPUT BLOCK:  
WIRE RANGE-#18 TO #4 AWG.  
TIGHTENING TORQUE 20 IN.-LB.

GROUND LUG:  
WIRE RANGE-1/0 TO #14 AWG.  
TIGHTENING TORQUE 200 IN.-LB.

TOLERANCES EXCEPT AS NOTED:				TCI 7878 N. 86th STREET MILWAUKEE, WI 53224	
				HG15AW03ST, 15HP 480/3/60 UL TYPE 3R	
				DRG. BY DSW	DATE 08/26/08
				SCALE TO FIT	103612DG
NO	REVISION	DATE	BY		SHT. 1 OF 1