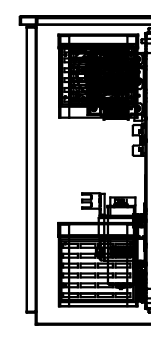
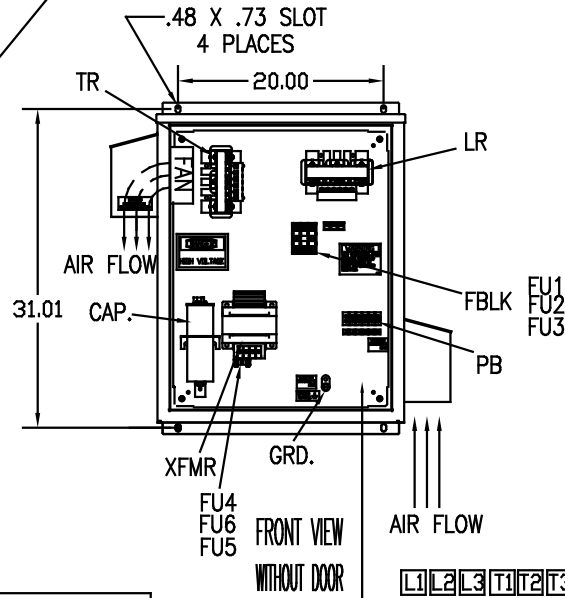
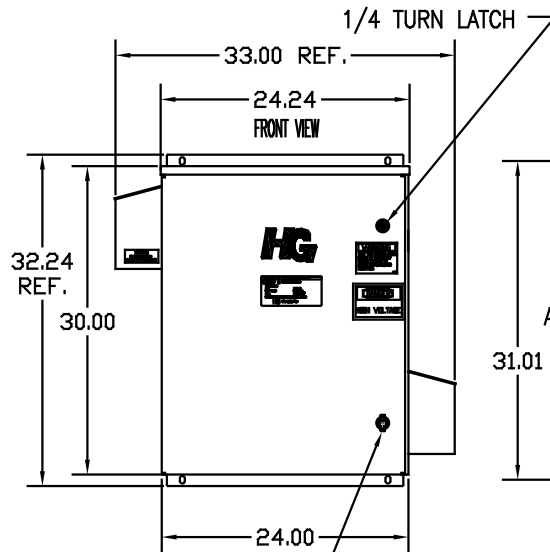
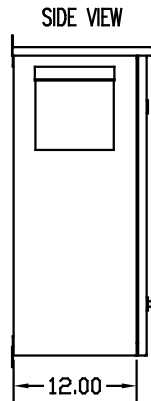
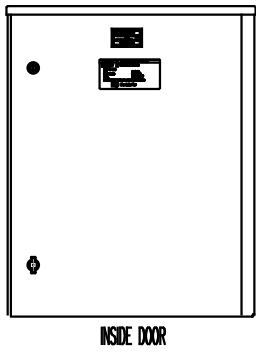
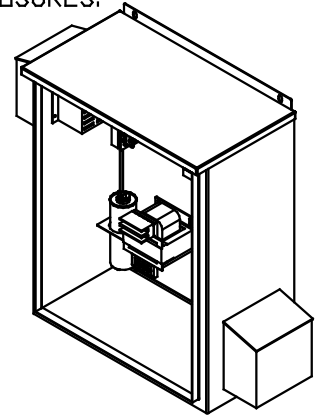
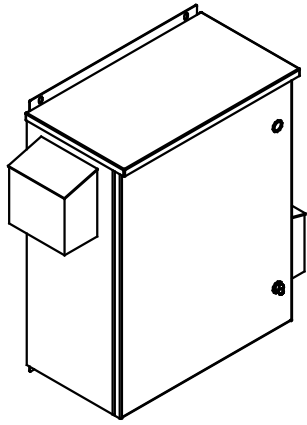


SEE DWG# 26756 FOR SCHEMATIC

CUSTOMER IS RESPONSIBLE FOR INSTALLATION TO MEET ALL NATIONAL AND LOCAL ELECTRICAL CODES.

NOTE: USE ONLY HUBS OR FITTINGS THAT COMPLY WITH UL514B FOR TYPE 3R ENCLOSURES.



UNIT SPECIFICATIONS:

KVAR HARMONIC	VOLT	HZ	PHASE	HP
3	5TH	480	60	3
ENCLOSURE	UL TYPE 3R			
COLOR	WHITE			
APPROX.WT. LBS.	112			

SYMBOL	TCI PART NUMBER
LR	KDRE1T
TR	KTR3A65HG
CAP. (3 KVAR)	KCAP3A6A
XFMR.	23896
Fu1, 2, 3	11262
Fu4,6	24009
Fu5	17567

PB—POWER INPUT BLOCK:
WIRE RANGE—#18 TO #4 AWG.
TIGHTENING TORQUE 20 IN—LB.

GROUND LUG:
WIRE RANGE—1/0 TO #14 AWG.
TIGHTENING TORQUE 200 IN—LB.



				TOLERANCES EXCEPT AS NOTED:		7878 N. 86th STREET MILWAUKEE, WI 53224
				DECIMAL		
				.XX ±.12		HG10AW03ST, 10HP 480/3/60 UL TYPE 3R DRG. BY DSW DATE 08/25/08 DWG. NO. 103611DG SCALE TO FIT
				.XXX±.06		
				FRACTIONAL ± 1/32		
				ANGULAR ± 1/2°		
NO.	REVISION	DATE	BY			SHT. 1 OF 1