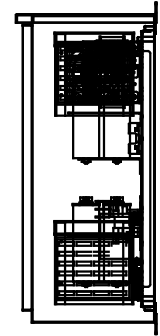
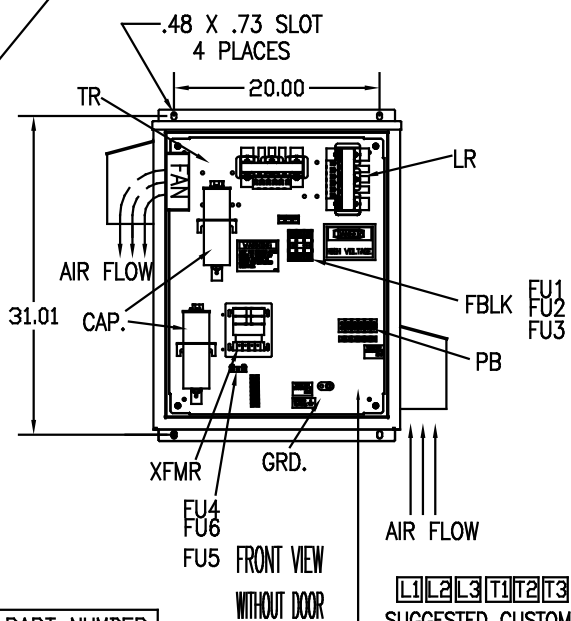
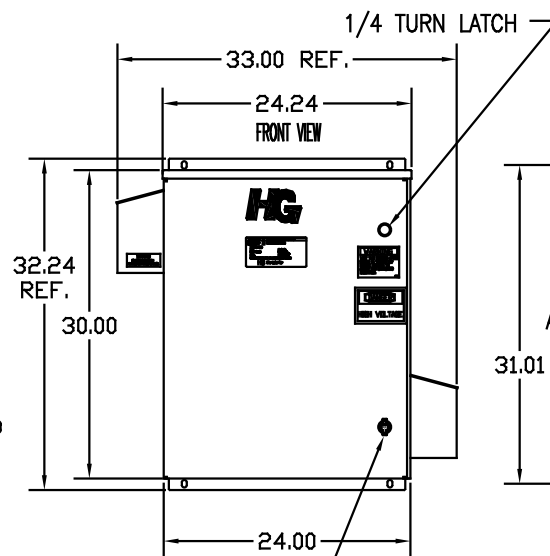
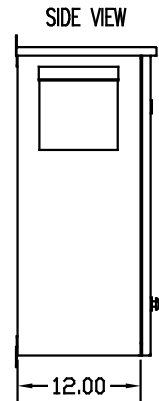
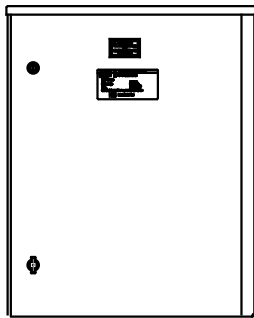
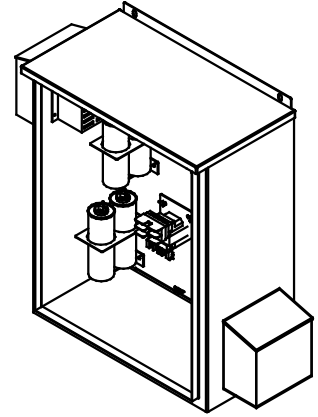
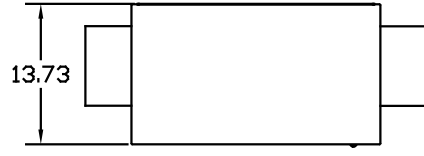
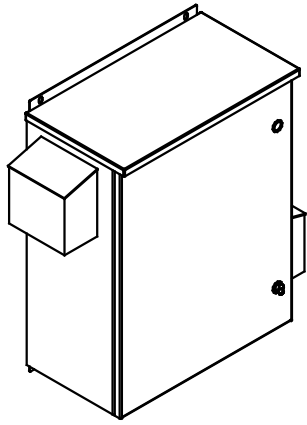


SEE DWG# 26901 FOR SCHEMATIC



**UNIT SPECIFICATIONS:**

KVAR	HARMONIC	VOLT	HZ	PHASE	HP
3	5TH	240	60	3	7.5
ENCLOSURE		UL TYPE 3R			
COLOR		WHITE			
APPROX.WT. LBS.		125			

SYMBOL	TCI PART NUMBER
LR	KDRC21T
TR	KTR3B65HG
CAP. (3 KVAR)	KCAP3A6A
XFMR.	23896
Fu1, 2, 3	15752
Fu4,6	14106
Fu5	17567

PB-POWER INPUT BLOCK:  
WIRE RANGE-#18 TO #4 AWG.  
TIGHTENING TORQUE 20 IN.-LB.

GROUND LUG:  
WIRE RANGE-1/0 TO #14 AWG.  
TIGHTENING TORQUE 200 IN.-LB.

CUSTOMER IS RESPONSIBLE FOR INSTALLATION TO MEET ALL NATIONAL AND LOCAL ELECTRICAL CODES.

NOTE: USE ONLY HUBS OR FITTINGS THAT COMPLY WITH UL514B FOR TYPE 3R ENCLOSURES.

NO	REVISION	DATE	BY	TOLERANCES EXCEPT AS NOTED	SCALE	APPROVAL	DATE	DWG. NO.	REV. NO.
				XX ±.12 .XXX±.06 FRACTIONAL ± 1/32 ANGULAR ± 1/2°	TO FIT		12/18/08	103654DG	1

**TCI** 7878 N. 86th STREET  
MILWAUKEE, WI 53224

HG8BW03ST, 7.5HP  
240/3/60 UL TYPE 3R

DWG. BY DSW DATE 12/18/08 DWG. NO. 103654DG REV. NO. 1