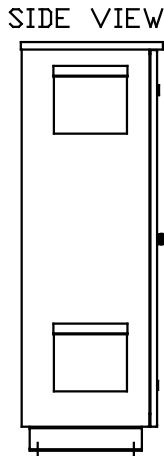
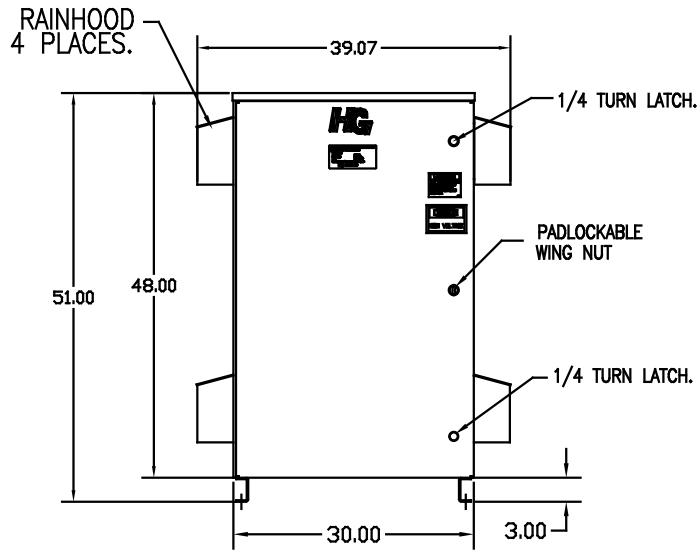


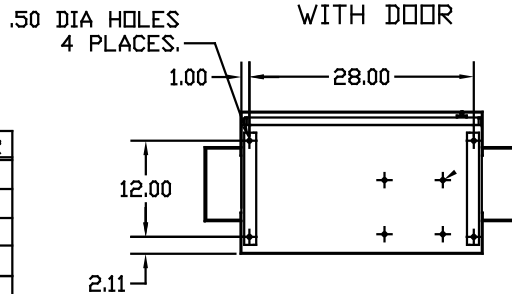
INSIDE VIEW OF DOOR



SIDE VIEW



FRONT VIEW WITH DOOR

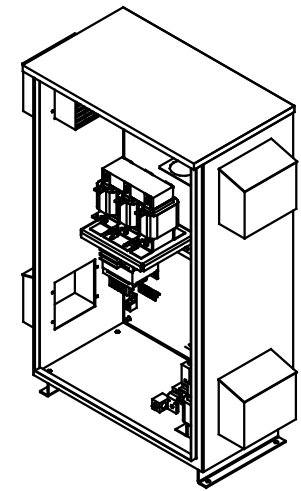


UNIT SPECIFICATIONS:						
KVAR	HARMONIC	VOLT	HZ	PHASE	HP	
25	5TH	240	60	3	75	
ENCLOSURE		TYPE 3R- COLOR, WHITE				
APPROX.WT. LBS		347				

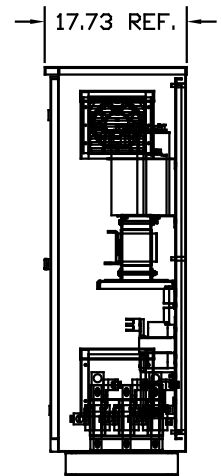
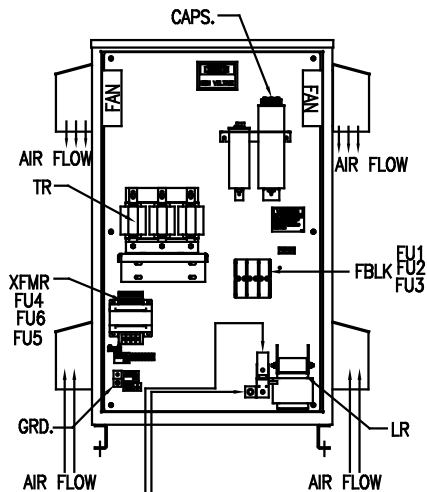
SEE DWG# 26902 FOR SCHEMATIC

CUSTOMER IS RESPONSIBLE FOR INSTALLATION TO MEET ALL NATIONAL AND LOCAL ELECTRICAL CODES.

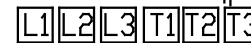
NOTE: USE ONLY HUBS OR FITTINGS THAT COMPLY WITH UL514B FOR TYPE 3R ENCLOSURES.



FRONT VIEW WITHOUT DOOR



SIDE VIEW



SUGGESTED CUSTOMER WIRE ENTRY AND EXIT LOCATION

GROUND LUG:  
WIRE RANGE- ONE 600MCM-4  
TWO 250MCM-1/0  
TIGHTENING TORQUE 500 IN.-LB.

CUSTOMER CONNECTIONS  
WIRE RANGE- ONE 600MCM-4  
TWO 250MCM-1/0  
TIGHTENING TORQUE 500 IN.-LB.

SYMBOL	TCI PART NUMBER
LR	KDRJ21T
TR	KTR25B65HG
CAP (5 KVAR), 1 PLACE.	KCAP5B6B
CAP (10 KVAR), 2 PLACES	KCAP10B6B
XFMR.	23899
Fu1,2,3	11077
Fu4,6	14106
Fu5	23977

NO	REVISION	DATE	BY	APPROVAL	TOLERANCES EXCEPT AS NOTED	SCALE
					XX ±.12 .XXX±.06 FRACTIONAL ± 1/32 ANGULAR ± 1/2°	TO FIT

**TCI** 7878 N. 86th STREET MILWAUKEE, WI 53224

HG75BW03ST, 75HP  
240/3/60 UL TYPE 3R

DWG BY DSW DATE 12/22/08 DWG NO. 103663DG  
SCALE TO FIT

SHT. 1 OF 1