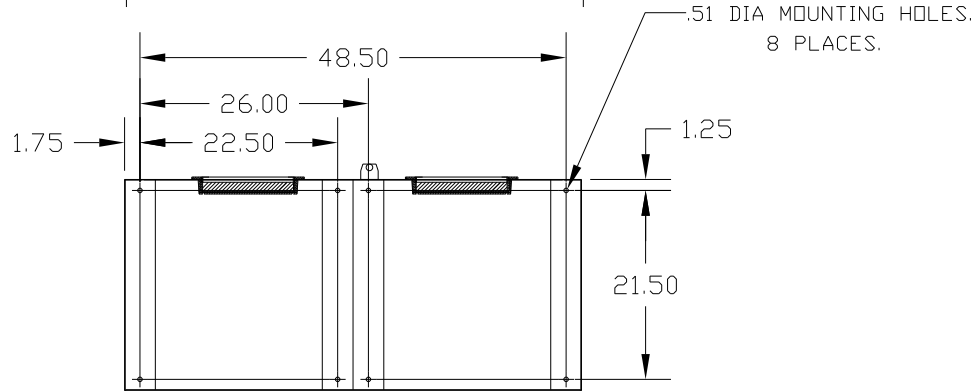
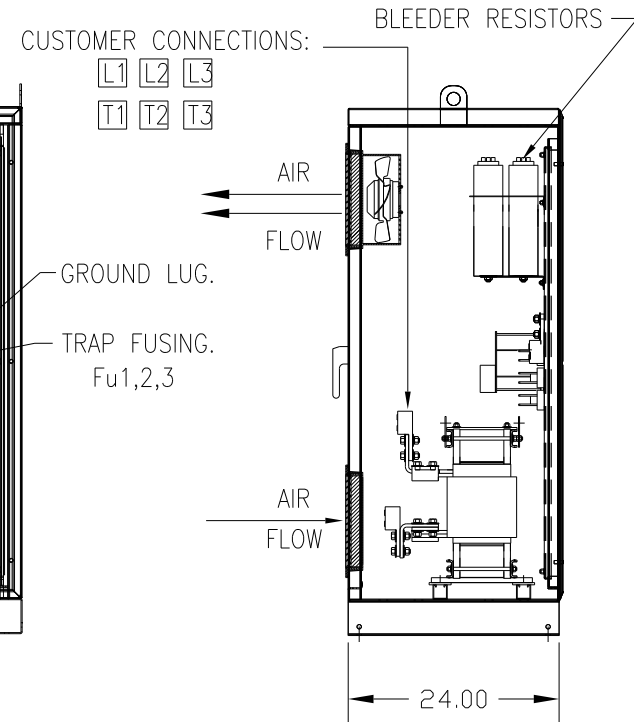
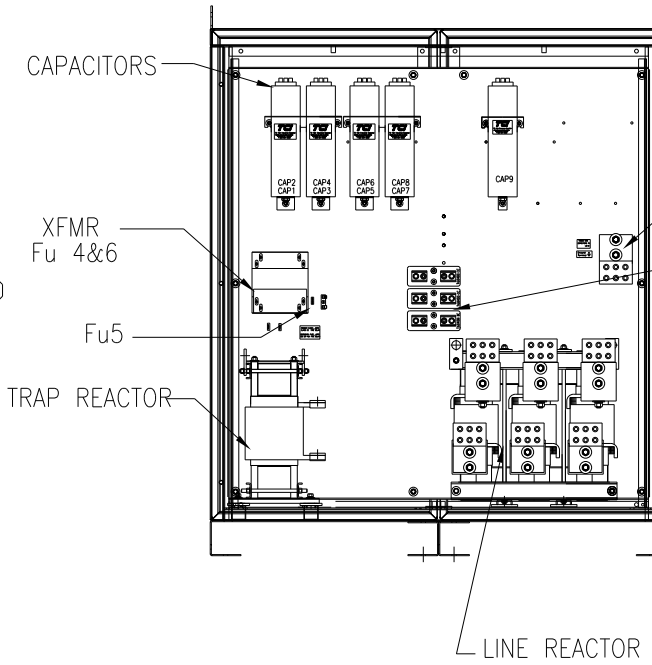
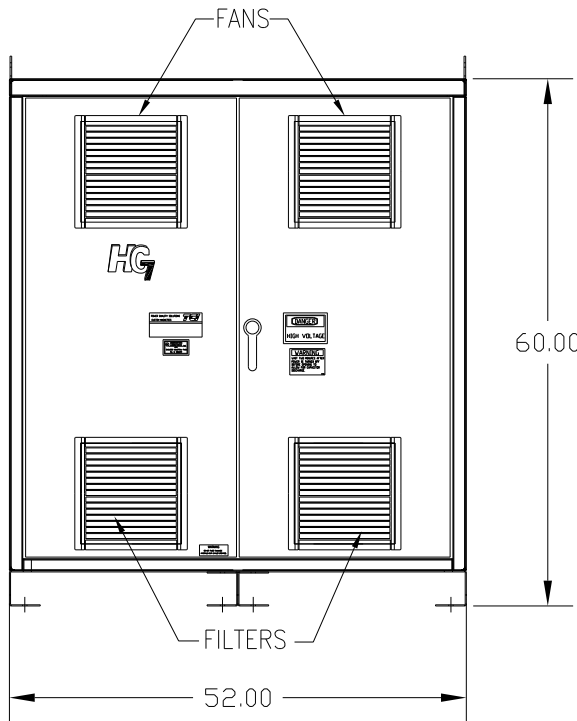


UNIT SPECIFICATIONS:						
KVAR	HARMONIC	VOLT	HZ	PHASE	HP	
180	5TH	600	60	3	600	
ENCLOSURE		NEMA 1				
APPROX.WT. LBS.		1400				

SYMBOL	TCI PART NUMBER
LR	KDRY42T
TR	KTR180C65HG
CAP1- 9 (20 KVAR)	KCAP20C6B
XFMR.	25292
Fu1a;2a;3a	13232
Fu4,6	24390
Fu5	23977



FOR SCHEMATIC SEE 25116

CUSTOMER IS RESPONSIBLE FOR INSTALLATION TO MEET ALL NATIONAL AND LOCAL ELECTRICAL CODES

CUSTOMER CONNECTIONS:  
WIRE RANGE-THREE 600MCM-2  
TIGHTENING TORQUE 375 IN-LB.

GROUND LUG:  
WIRE RANGE-THREE 600MCM-2  
TIGHTENING TORQUE 375 IN-LB.

				TOLERANCES (EXCEPT AS NOTED)		TCI 7878 N. 86th STREET MILWAUKEE, WI 53224	
				DECIMAL		HG600CW01ST, HG7 STANDARD 600HP, 600/3/60, TYPE 1	
				.XX ±.03			
				.XXX ±.01			
B 2786 REMOVE COLOR		11/14/11	DSW	FRACTIONAL ± 1/32		DRN. BY DATE DWG. NO. DSW 06/21/05 C 102701DG	
A 2516, CAP WAS 18612		9/30/07	RJC	ANGULAR ± 1/2°			
NO REVISION		DATE	BY	SCALE TO FIT		APRVD 06/21/05 SHT. 1 OF 1	