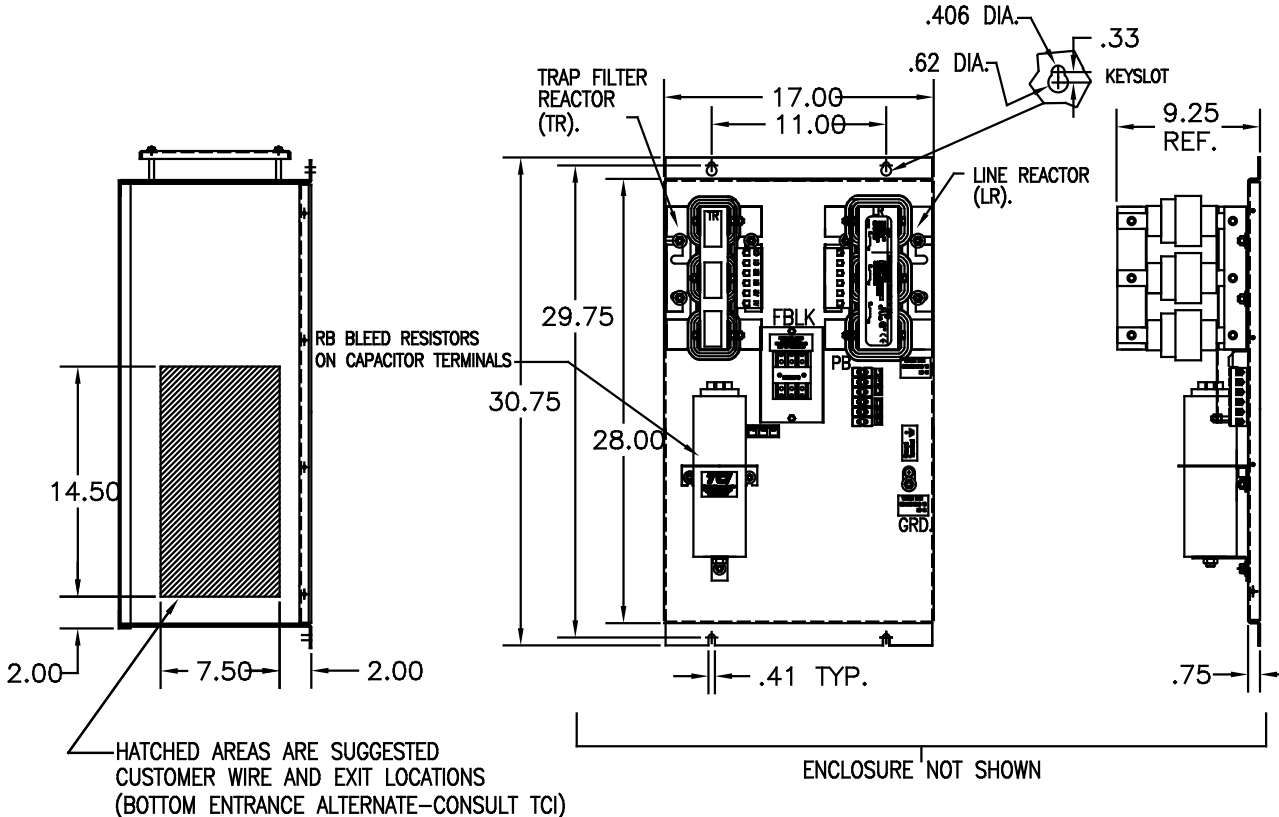
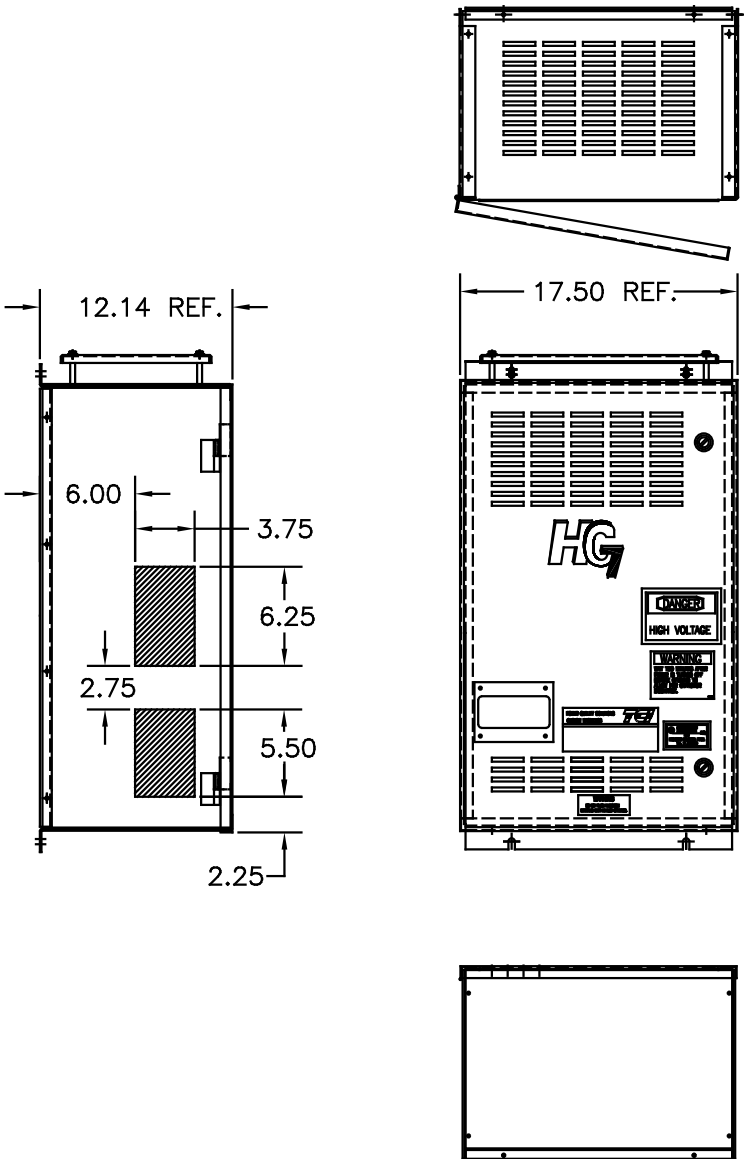


UNIT SPECIFICATIONS:					
KVAR	HARMONIC	VOLT	HZ	PHASE	HP
15	5TH	600	60	3	50
ENCLOSURE		NEMA 1- COLOR, BLACK			
APPROX.WT. LBS.		180			

SYMBOL	TCI PART NUMBER
LR	KDRG41T
TR	KTR15C65HG
CAP.	17817
Fu1, 2, 3	11307



HATCHED AREAS ARE SUGGESTED CUSTOMER WIRE AND EXIT LOCATIONS (BOTTOM ENTRANCE ALTERNATE-CONSULT TCI)

SEE 25114 FOR SCHEMATIC

CUSTOMER IS RESPONSIBLE FOR INSTALLATION TO MEET ALL NATIONAL AND LOCAL ELECTRICAL CODES.

PB-POWER INPUT BLOCK:
WIRE RANGE-#18 TO #4 AWG.
TIGHTENING TORQUE 20 IN-LB.

GROUND LUG:
WIRE RANGE-1/0 TO #14 AWG.
TIGHTENING TORQUE 200 IN-LB.

TOLERANCES (UNLESS AS NOTED)				TOL. BY	DATE	DRAW. NO.	REV.
NO.	REVISION	DATE	BY				
				.XX ±.03			
				.XXX±.01			
				FRACTIONAL ± 1/32			
				ANGULAR ± 1/2°			
				SCALE TO FIT	DSW	03/15/05	C

TCI 7878 N. 86th STREET
MILWAUKEE, WI 53224

HG50CW01ST, HG7 STANDARD
50HP, 600/3/60, TYPE 1

102483DG
SHT. 1 OF 1