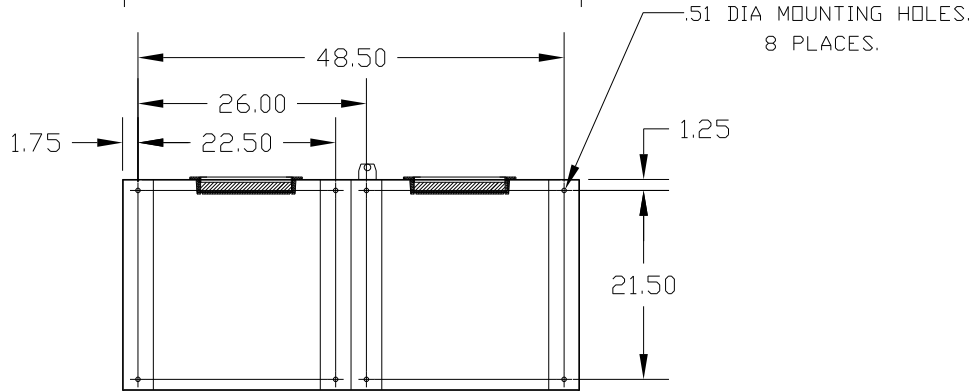
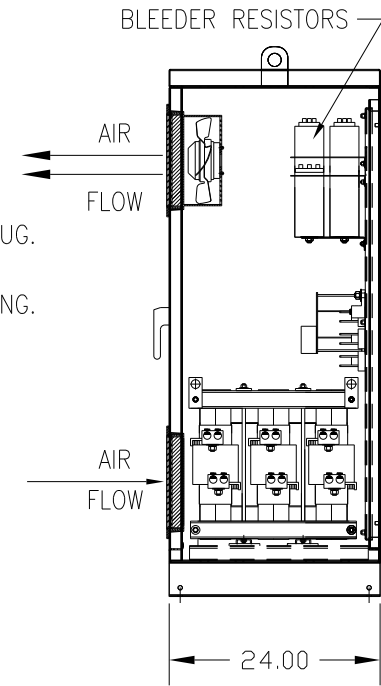
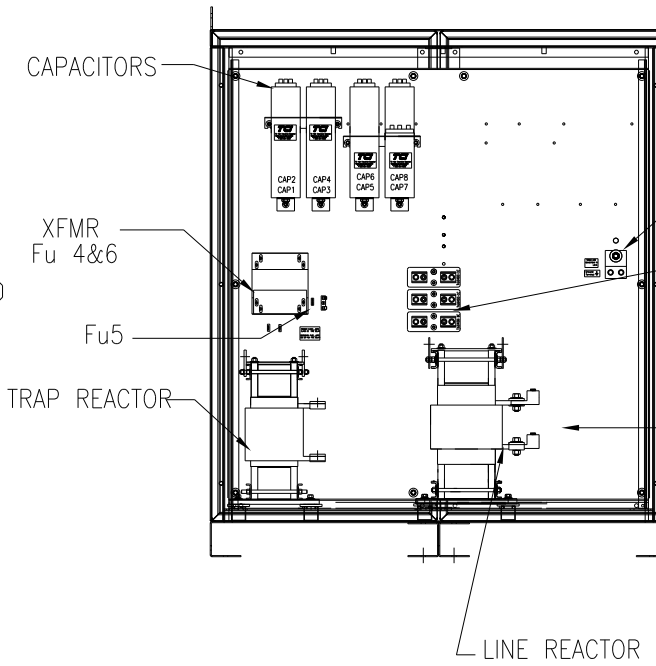
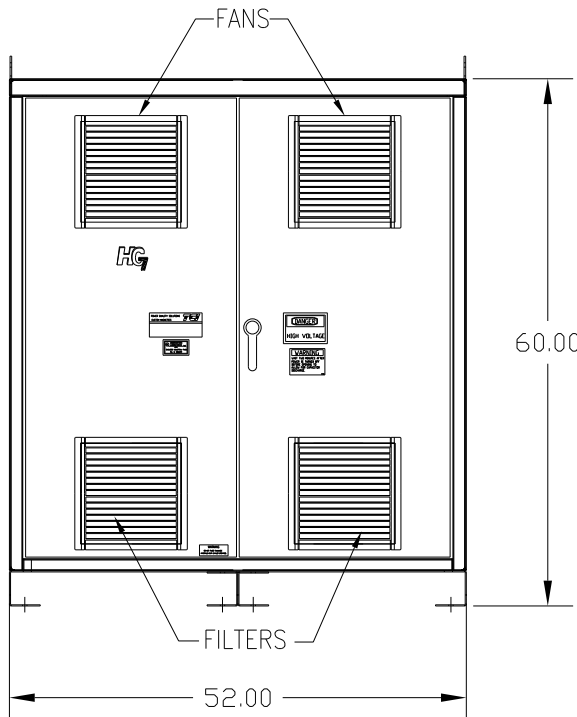


| UNIT SPECIFICATIONS: | | | | | | |
|----------------------|----------|--------|----|-------|-----|--|
| KVAR | HARMONIC | VOLT | HZ | PHASE | HP | |
| 150 | 5TH | 600 | 60 | 3 | 500 | |
| ENCLOSURE | | NEMA 1 | | | | |
| APPROX.WT. LBS. | | 1300 | | | | |

| SYMBOL | TCI PART NUMBER |
|-------------------|-----------------|
| LR | KDRY41T |
| TR | KTR150C65HG |
| CAP1 -7 (20 KVAR) | KCAP20C6B |
| CAP8 (10 KVAR) | KCAP10C6B |
| XFMR. | 25292 |
| Fu1a;2a;3a | 12462 |
| Fu4,6 | 24390 |
| Fu5 | 23977 |



CUSTOMER CONNECTIONS:
 L1 L2 L3
 T1 T2 T3

FOR SCHEMATIC SEE 25116

CUSTOMER IS RESPONSIBLE FOR INSTALLATION TO MEET ALL NATIONAL AND LOCAL ELECTRICAL CODES

CUSTOMER CONNECTIONS:
 WIRE RANGE-TWO 600MCM-2
 TIGHTENING TORQUE 500 IN-LB.

GROUND LUG:
 WIRE RANGE-TWO 600MCM-2
 TIGHTENING TORQUE 500 IN-LB.

| | | | | TOLERANCES (EXCEPT AS NOTED) | | |
|-----------------------|--|---------------------------|--|--|-----|--|
| | | | | DECIMAL | | |
| | | | | .XX ±.03 | | |
| | | | | .XXX ±.01 | | |
| B 2786 REMOVE COLOR | | | | 11/14/11 | DSW | |
| A 2516, CAP WAS 18612 | | | | | | |
| | | | | FRACTIONAL | | |
| | | | | ± 1/32 | | |
| CAP WAS 17816 | | | | 9/30/07 | RJC | |
| NO REVISION | | | | DATE | BY | |
| | | | | ANGULAR | | |
| | | | | ± 1/2° | | |
| | | | | 7878 N. 86th STREET MILWAUKEE, WI 53224 | | |
| | | | | HG500CW01ST, HG7 STANDARD 500HP, 600/3/60, TYPE 1 | | |
| | | DRN. BY DSW DATE 06/21/05 | | DWG. NO. 102699DG | | |
| | | SCALE TO FIT | | SHT. 1 OF 1 | | |