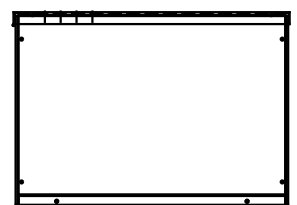
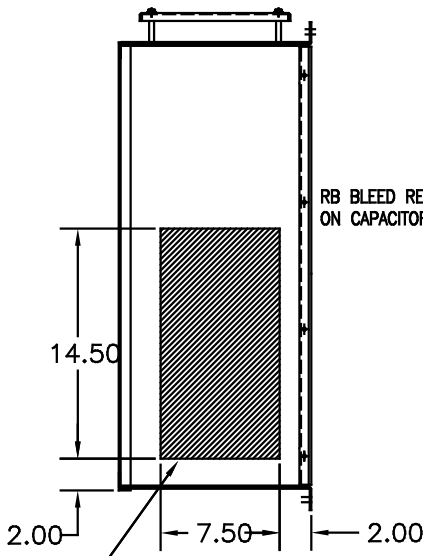
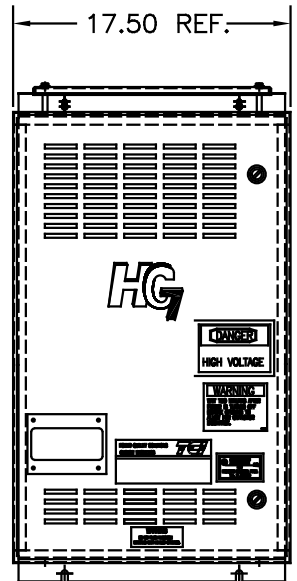
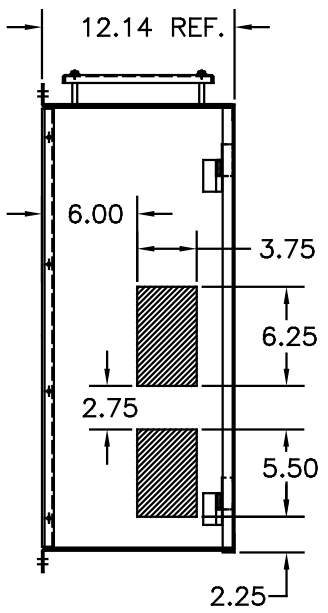
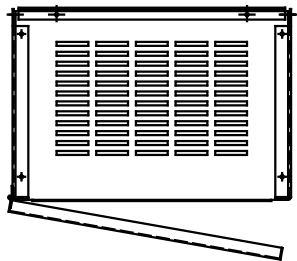
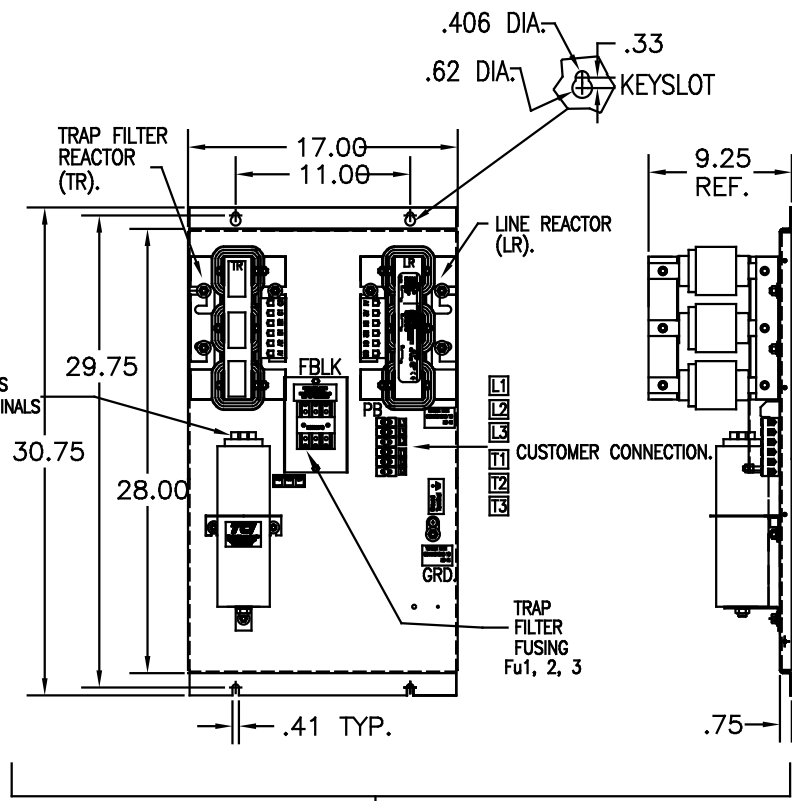


UNIT SPECIFICATIONS:						
KVAR	HARMONIC	VOLT	HZ	PHASE	HP	
15	5TH	600	60	3	40	
ENCLOSURE		NEMA 1- COLOR, BLACK				
APPROX.WT. LBS.		170				

SYMBOL	TCI PART NUMBER
LR	KDRI41T
TR	KTR15C65HG
CAP.	17817
Fu1, 2, 3	11307



HATCHED AREAS ARE SUGGESTED CUSTOMER WIRE AND EXIT LOCATIONS (BOTTOM ENTRANCE ALTERNATE-CONSULT TCI)



ENCLOSURE NOT SHOWN

SEE 25114 FOR SCHEMATIC

CUSTOMER IS RESPONSIBLE FOR INSTALLATION TO MEET ALL NATIONAL AND LOCAL ELECTRICAL CODES.

PB-POWER INPUT BLOCK:
WIRE RANGE-#18 TO #4 AWG.
TIGHTENING TORQUE 20 IN.-LB.

GROUND LUG:
WIRE RANGE-1/0 TO #14 AWG.
TIGHTENING TORQUE 200 IN.-LB.

NO.	REVISION	DATE	BY	TOLERANCES (UNLESS AS NOTED)	APPROVAL
				DECIMAL	
				.XX ±.03	
				.XXX±.01	
				FRACTIONAL	
				± 1/32	
				ANGULAR	
				± 1/2°	

TCI 7878 N. 86th STREET
MILWAUKEE, WI 53224

HG40CW01ST, HG7 STANDARD
40HP, 600/3/60, TYPE 1

DRW. BY DSW DATE 03/15/05 DWG. NO. 102481DG
SCALE TO FIT APPR. C