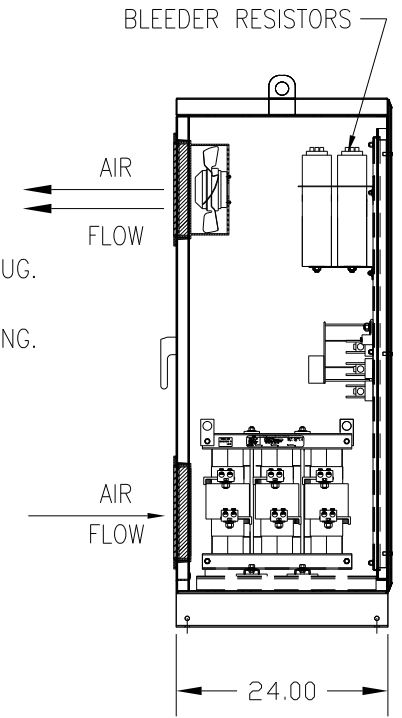
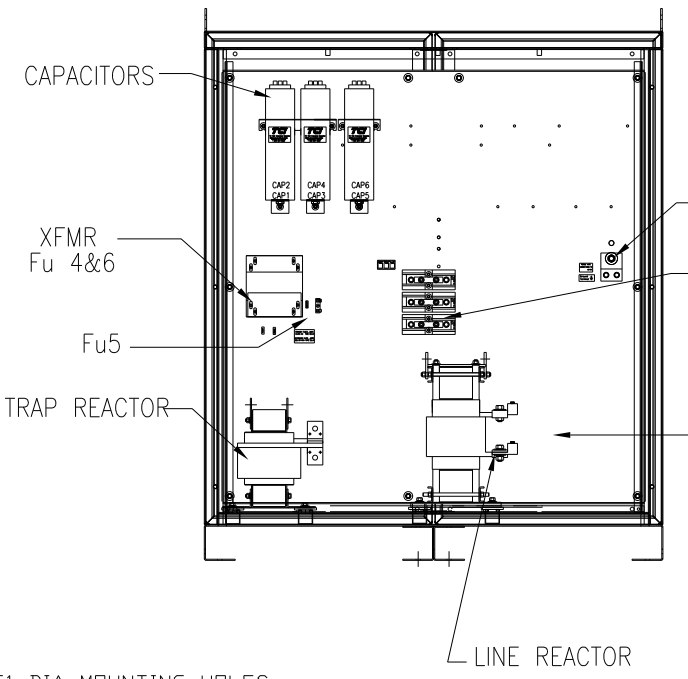
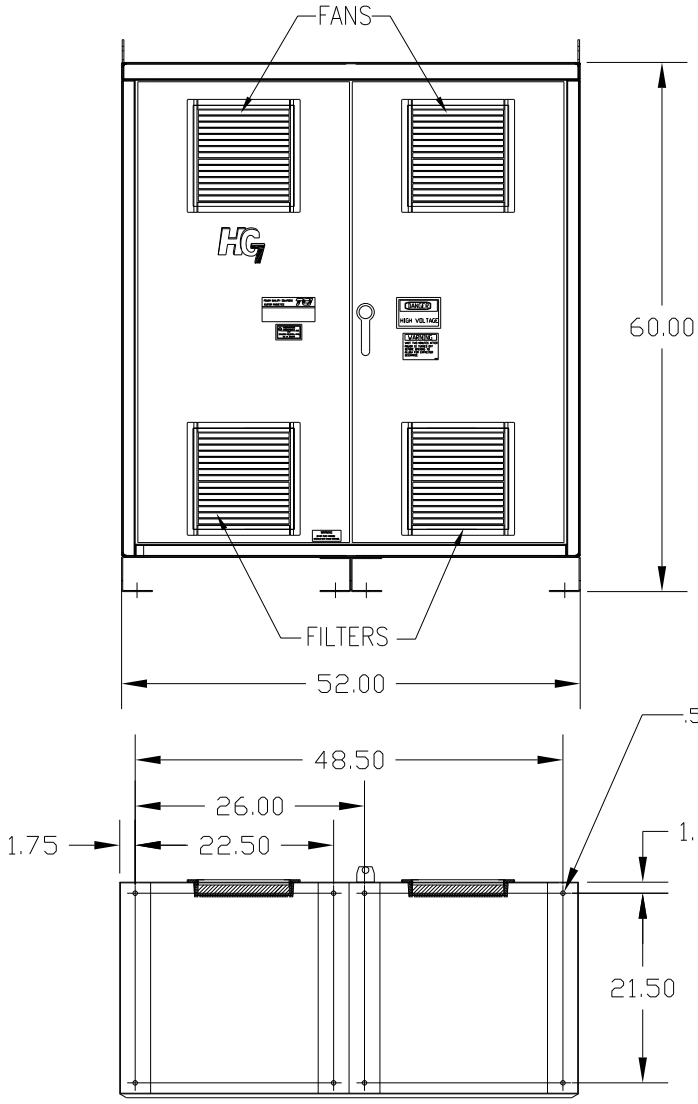


UNIT SPECIFICATIONS:						
KVAR	HARMONIC	VOLT	HZ	PHASE	HP	
120	5TH	600	60	3	400	
ENCLOSURE		NEMA 1				
APPROX.WT. LBS.		990				

SYMBOL	TCI PART NUMBER
LR	KDRX43T
TR	KTRI20C65HG
CAP1 -6 (20 KVAR)	KCAP20C6B
XFMR.	25292
Fu1,2,3a	11175
Fu4,6	24390
Fu5	23977



CUSTOMER CONNECTIONS:
 L1 L2 L3
 T1 T2 T3

CUSTOMER CONNECTIONS:
 WIRE RANGE-TWO 350MCM-4
 TIGHTENING TORQUE 275 IN-LB.

GROUND LUG:
 WIRE RANGE-TWO 350MCM-4
 TIGHTENING TORQUE 275 IN-LB.

FOR SCHEMATIC SEE 25116

CUSTOMER IS RESPONSIBLE FOR INSTALLATION TO MEET ALL NATIONAL AND LOCAL ELECTRICAL CODES

				TOLERANCES (EXCEPT AS NOTED)		TCI 7878 N. 86th STREET MILWAUKEE, WI 53224	
				DECIMAL			HG400CW01ST, HG7 STANDARD 400 HP, 600/3/60, TYPE 1
				XX ± .03			
				XXX ± .01			
2786 REMOVE COLOR	11/14/11	DSW		FRACTIONAL ± 1/32			DRN. BY DSW DATE 03/17/05 DWG. NO. 102491DG
2516, CAP WAS 18612	9/30/07	RJC		ANGULAR ± 1/2°			
NO	REVISION	DATE	BY	SCALE TO FIT	APRVD		SHT. 1 OF 1