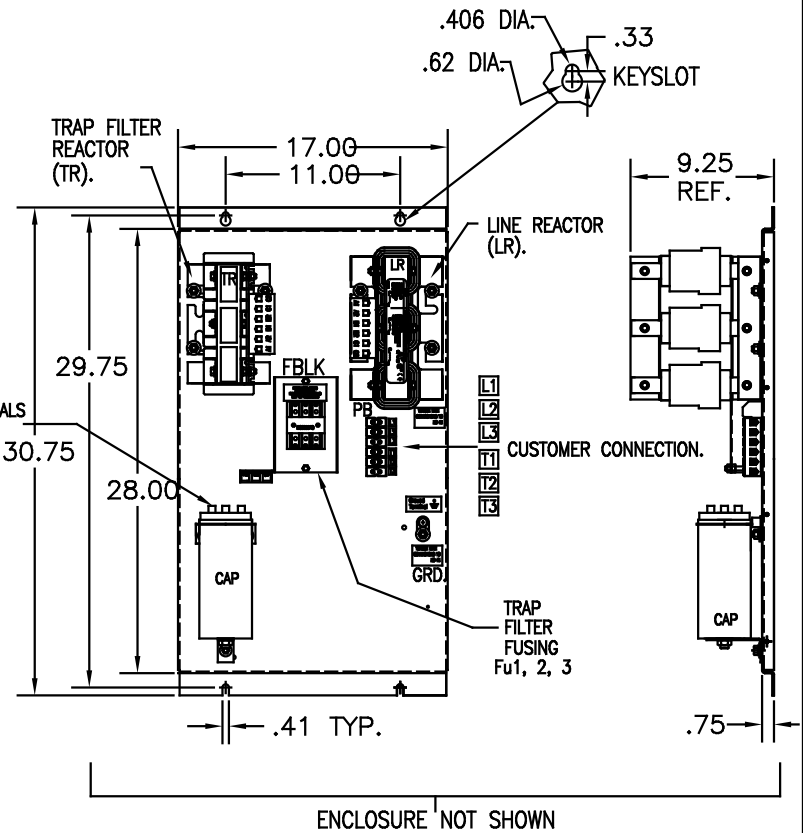
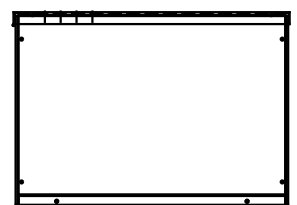
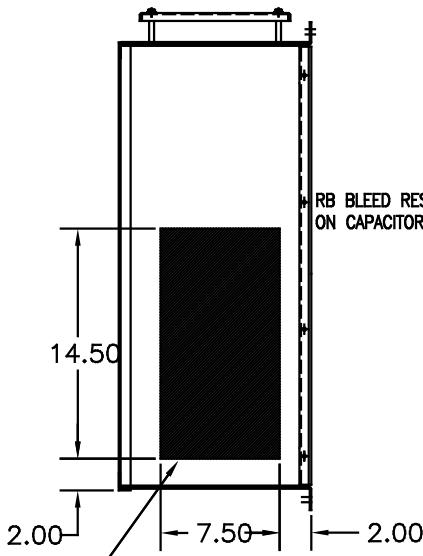
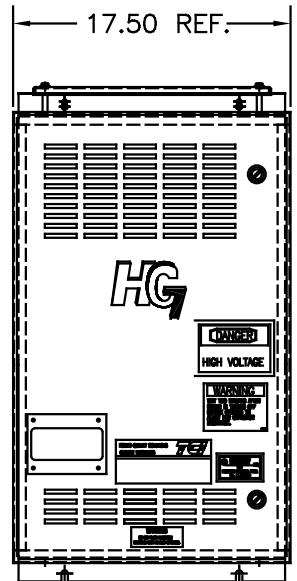
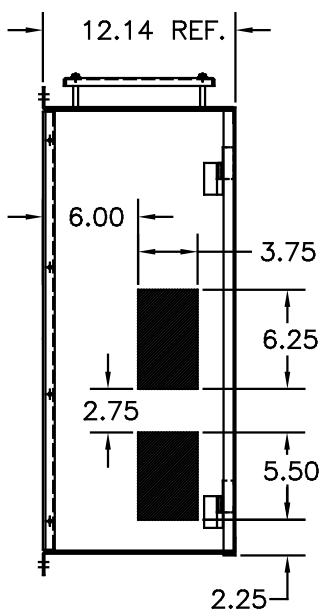
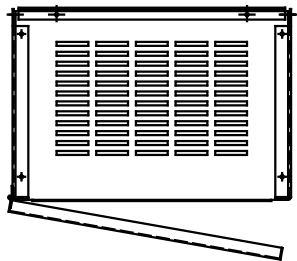


UNIT SPECIFICATIONS:						
KVAR	HARMONIC	VOLT	HZ	PHASE	HP	
10	5TH	600	60	3	30	
ENCLOSURE		NEMA 1- COLOR, BLACK				
APPROX.WT. LBS.		130				

SYMBOL	TCI PART NUMBER
LR	KDRH41T
TR	KTR10C65HG
CAP.	17816
Fu1, 2, 3	22665



HATCHED AREAS ARE SUGGESTED CUSTOMER WIRE AND EXIT LOCATIONS (BOTTOM ENTRANCE ALTERNATE-CONSULT TCI)

ENCLOSURE NOT SHOWN

SEE 25114 FOR SCHEMATIC

CUSTOMER IS RESPONSIBLE FOR INSTALLATION TO MEET ALL NATIONAL AND LOCAL ELECTRICAL CODES.

PB-POWER INPUT BLOCK:
WIRE RANGE-#18 TO #4 AWG.
TIGHTENING TORQUE 20 IN.-LB.

GROUND LUG:
WIRE RANGE-1/0 TO #14 AWG.
TIGHTENING TORQUE 200 IN.-LB.

NO.	REVISION	DATE	BY	TOLERANCES (UNLESS AS NOTED)	APPROVAL	DATE	SCALE	REV. NO.	APP. NO.	REV. DATE
				REGULAR						
				.XX ±.03						
				.XXX±.01						
				FRACTIONAL ± 1/32						
				ANGULAR ± 1/2°						

TCI 7878 N. 86th STREET
MILWAUKEE, WI 53224

HG30CW01ST, HG7 STANDARD
30HP, 600/3/60, TYPE 1

DSW 03/15/05 102479DG
TO FIT

SHT. 1 OF 1