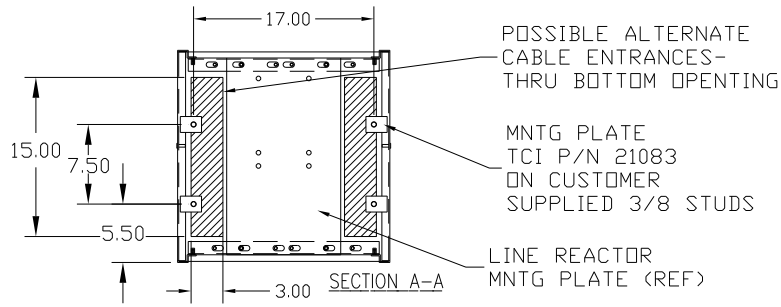
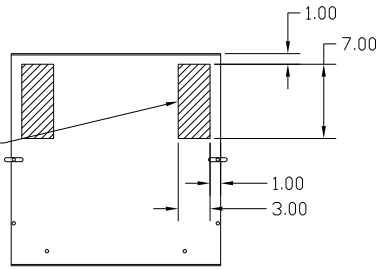


POSSIBLE ALTERNATE CABLE ENTRANCES-REQUIRES MODIFICATION OF AIR FLOW DEFLECTOR

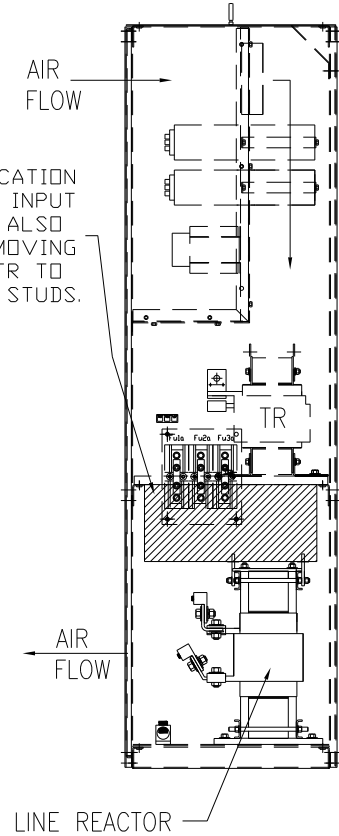
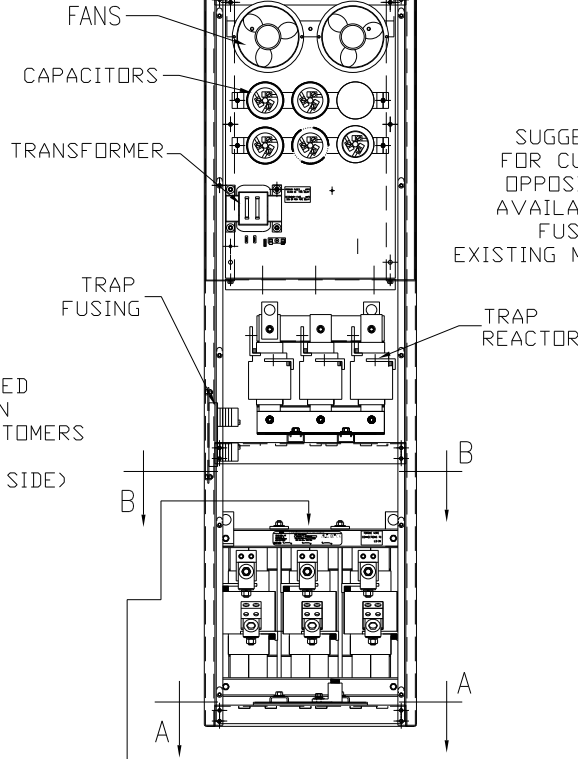
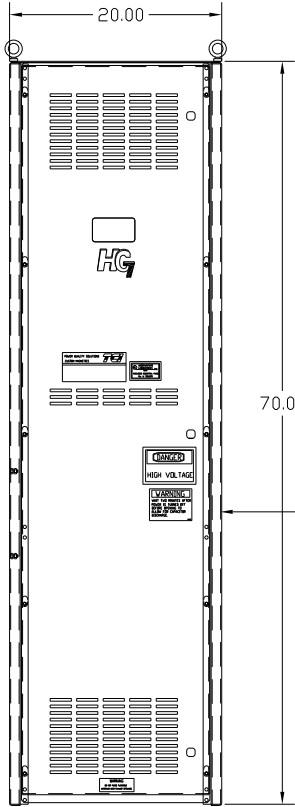
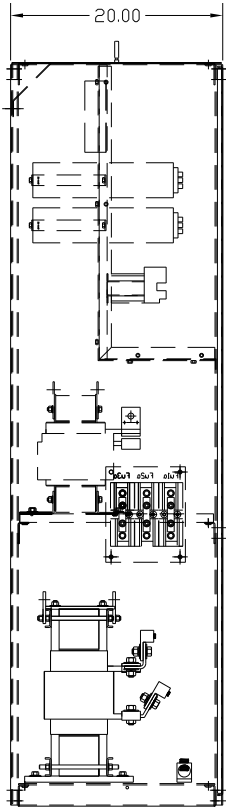


**CUSTOMER CONNECTIONS:**

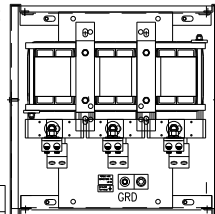
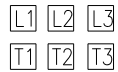
WIRE RANGE-TWO 350MCM-4  
TIGHTENING TORQUE 275 IN-LB.

**GROUND LUG:**

WIRE RANGE-ONE 600MCM-4  
TWO 250MCM-1/0  
TIGHTENING TORQUE 500 IN-LB.



**CUSTOMER CONNECTIONS:**



FOR SCHEMATIC SEE 25116

CUSTOMER IS RESPONSIBLE FOR INSTALLATION TO MEET ALL NATIONAL AND LOCAL ELECTRICAL CODES

**UNIT SPECIFICATIONS:**

KVAR	HARMONIC	VOLT	HZ	PHASE	HP
90	5TH	600	60	3	300
ENCLOSURE		NEMA 1			
APPROX.WT. LBS.		675			

SYMBOL	TCI PART NUMBER
LR	KDRX41T
TR	KTR90C65HG
CAP1 ,2 ,3 ,4. (20 KVAR)	KCAP20C6B
CAP5. (10 KVAR)	KCAP10C6B
XFMR.	25292
Fu1a;2a;3a	11170
Fu4,6	24390
Fu5	23977

NO	REVISION	DATE	BY	TOLERANCES (EXCEPT AS NOTED)
B	2786	11/14/11	DSW	XX ± .03 XXX ± .01
A	2516, CAP WAS 18612			FRACTIONAL ± 1/32
	CAP WAS 17816	9/30/07	RJC	ANGULAR ± 1/2°
NO				

**TCI** 7878 N. 86th STREET MILWAUKEE, WI 53224

HG300CW01ST,HG7 STANDARD 300 HP, 600/3/60, TYPE 1

DRN. BY DSW DATE 03/18/05 DWG. NO. 102499DG SHT. 1 OF 1

SCALE TO FIT