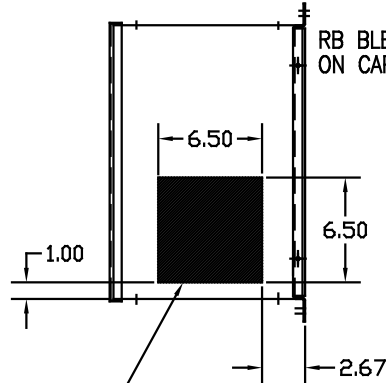
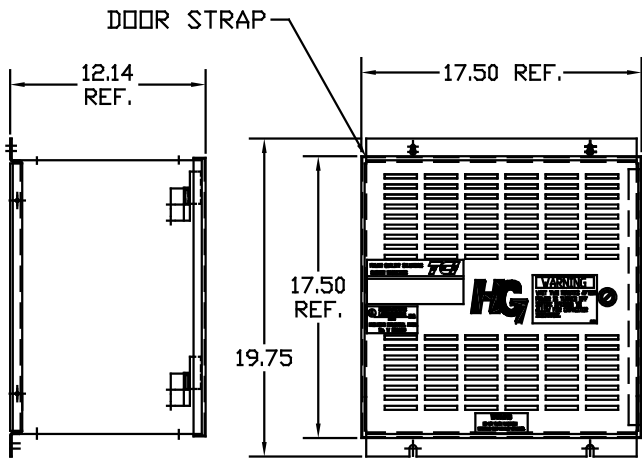
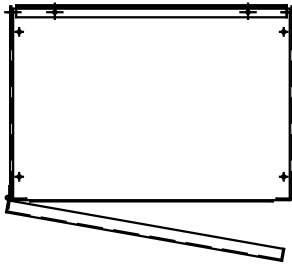
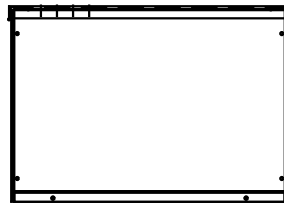


UNIT SPECIFICATIONS:					
KVAR HARMONIC	VOLT	HZ	PHASE	HP	
3	5TH	480	60	3	7.5
ENCLOSURE	NEMA 1- COLOR, BLACK				
APPROX.WT. LBS.	66				

SYMBOL	TCI PART NUMBER
LR	KDRC1T
TR	KTR3A65HG
CAP.	16446
Fu1, 2, 3	11262

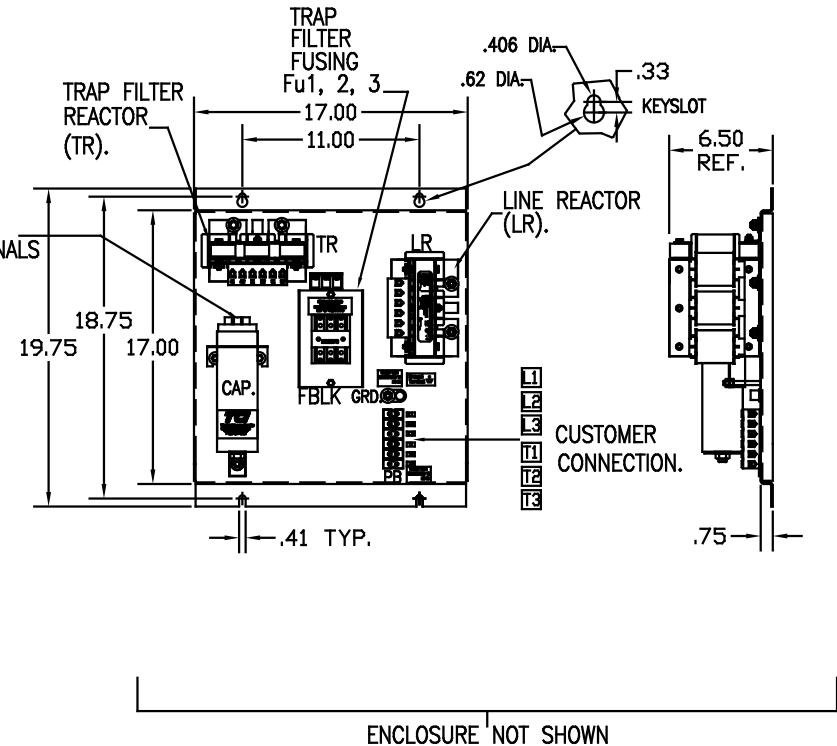


HATCHED AREAS ARE SUGGESTED
CUSTOMER WIRE AND EXIT LOCATIONS
(BOTTOM ENTRANCE ALTERNATE-CONSULT TCI)



PB-POWER INPUT BLOCK:
WIRE RANGE-#18 TO #4 AWG.
TIGHTENING TORQUE 20 IN-LB.

GROUND LUG:
WIRE RANGE-1/0 TO #14 AWG.
TIGHTENING TORQUE 200 IN-LB.



ENCLOSURE NOT SHOWN

SEE 25077 FOR SCHEMATIC

CUSTOMER IS RESPONSIBLE FOR INSTALLATION
TO MEET ALL NATIONAL AND LOCAL ELECTRICAL CODES.

TOLERANCES EXCEPT AS NOTED:				7878 N. 86th STREET MILWAUKEE, WI 53224
DECIMAL	FRACTIONAL	ANGULAR	SCALE	
XX ±.03				HG8AW01ST, HG7 STANDARD 7.5HP, 480/3/60, TYPE 1
.XXX±.01				
	± 1/32			Dwg. No. 102552DG Sht. 1 of 1
	± 1/2°			
NO	REVISION	DATE	BY	DSW 03/08/05 TO FIT