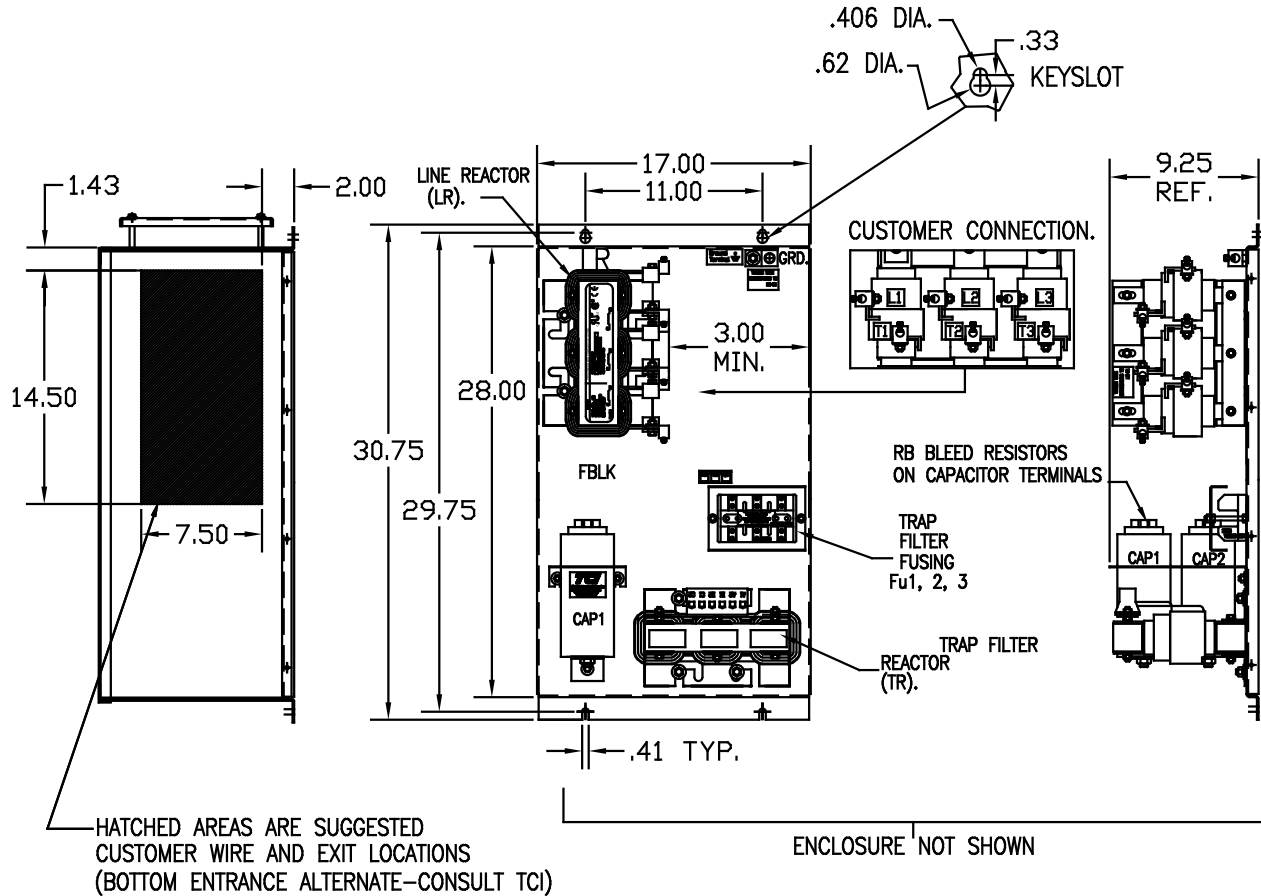
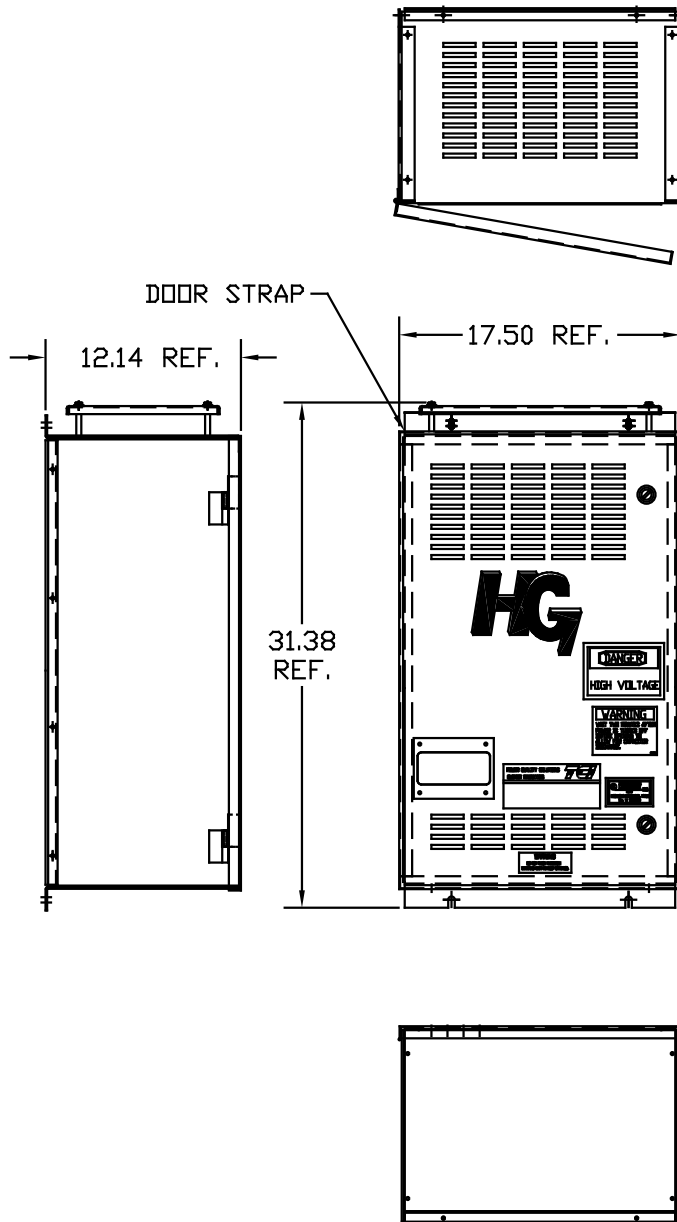


UNIT SPECIFICATIONS:						
KVAR HARMONIC	VOLT	HZ	PHASE	HP		
25	5TH	480	60	3	75	
ENCLOSURE	NEMA 1- COLOR, BLACK					
APPROX.WT. LBS.	195					

SYMBOL	TCI PART NUMBER
LR	KDRG3T
TR	KTR25A65HG
CAP1.	16449
CAP2.	16448
Fu1, 2, 3	11006



FOR SCHEMATIC SEE 25078

CUSTOMER IS RESPONSIBLE FOR INSTALLATION TO MEET ALL NATIONAL AND LOCAL ELECTRICAL CODES.

CUSTOMER CONNECTIONS

WIRE RANGE-2/0-6

TIGHTENING TORQUE 120 IN-LB.

GROUND LUG:

WIRE RANGE-2/0-6

TIGHTENING TORQUE 120 IN-LB.

TOLERANCES EXCEPT AS NOTED:				TCI	7878 N. 86th STREET MILWAUKEE, WI 53224
NO.	REVISION	DATE	BY		
					HG75AW01ST, HG7 STANDARD 75HP, 480/3/60, TYPE 1
					DRG. BY DSW DATE 03/08/05 DWG. NO. 102561DG
					SCALE TO FIT
					SHT. 1 OF 1