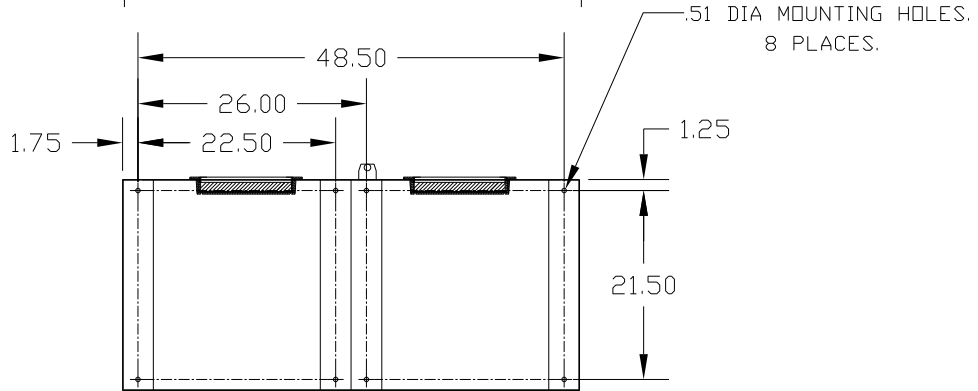
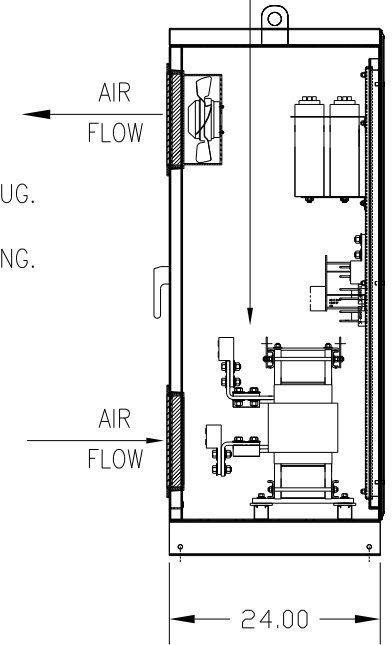
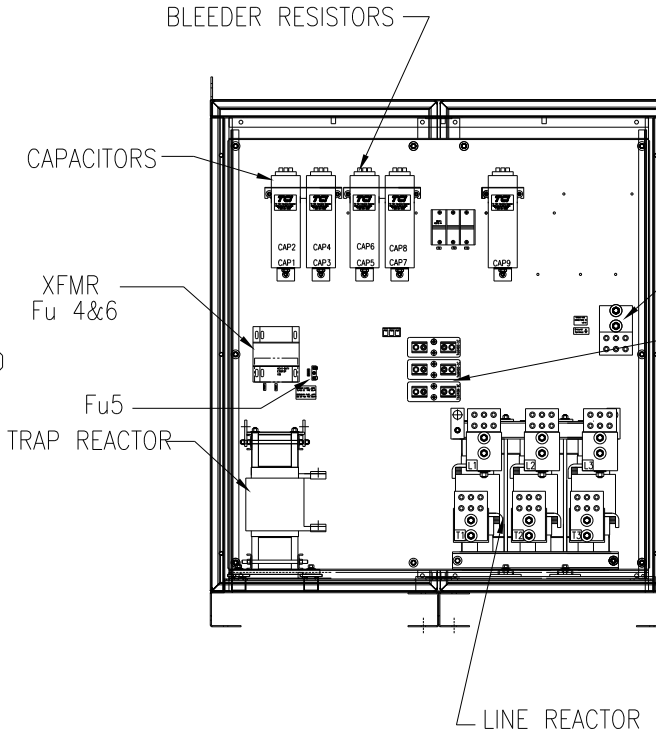
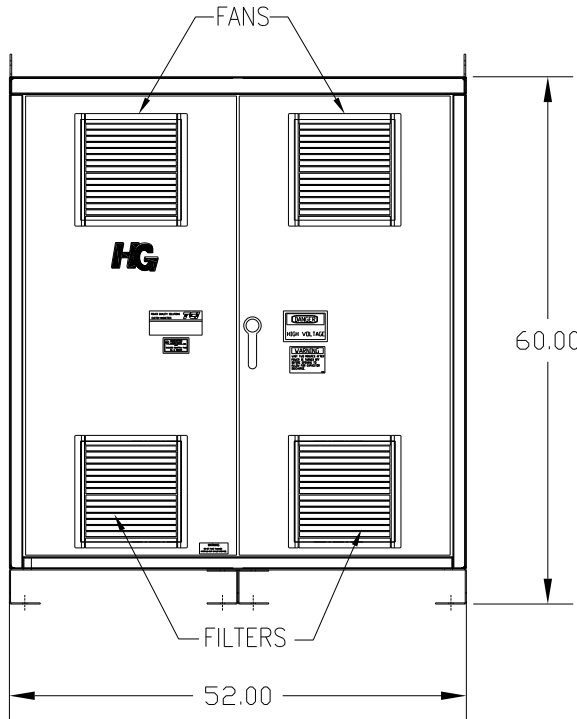
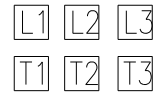


UNIT SPECIFICATIONS:					
KVAR	HARMONIC	VOLT	HZ	PHASE	HP
180	5TH	480	60	3	600
ENCLOSURE		NEMA 1			
APPROX.WT. LBS.		1235			

SYMBOL	TCI PART NUMBER
LR	KDRY1T
TR	KTR180A65HG
CAP1 -9 (20 KVAR)	KCAP20A6B
XFMR.	23899
Fu1a;2a;3a	12596
Fu4,6	14106
Fu5	23977

CUSTOMER CONNECTIONS:



FOR SCHEMATIC SEE 25092

CUSTOMER IS RESPONSIBLE FOR INSTALLATION TO MEET ALL NATIONAL AND LOCAL ELECTRICAL CODES

CUSTOMER CONNECTIONS:
WIRE RANGE-THREE 600MCM-2
TIGHTENING TORQUE 375 IN.-LB.

GROUND LUG:
WIRE RANGE-THREE 600MCM-2
TIGHTENING TORQUE 375 IN.-LB.

				TOLERANCES (EXCEPT AS NOTED)		TCI 7878 N. 86th STREET MILWAUKEE, WI 53224		
				DECIMAL		HG600AW01ST, HG7 STANDARD 600HP, 480/3/60, TYPE 1		
				XX ±.03 XXX ±.01				
2786	REMOVE COLOR	11/14/11	DSW	FRACTIONAL	± 1/32	DRN. BY	DSW	
2516,	CAP WAS 23123	9/30/07	RJC	ANGULAR	± 1/2°	DATE	06/10/05	
NO	REVISION	DATE	BY	SCALE	TO FIT	APRVD	102687DG	
							DWG. NO.	102687DG
							SCALE	SHT. 1 OF 1