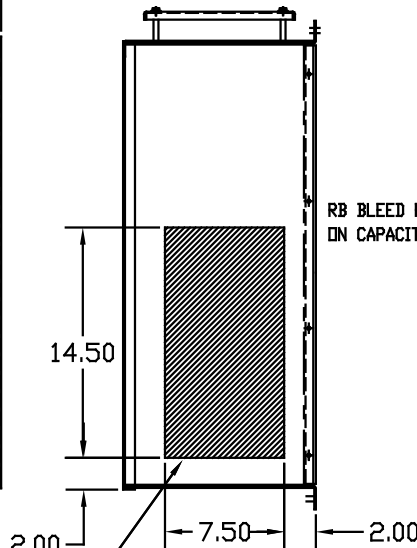
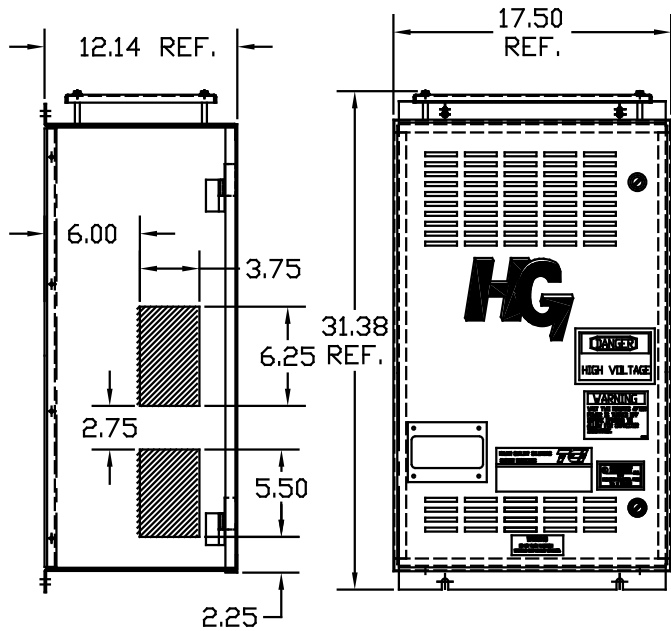
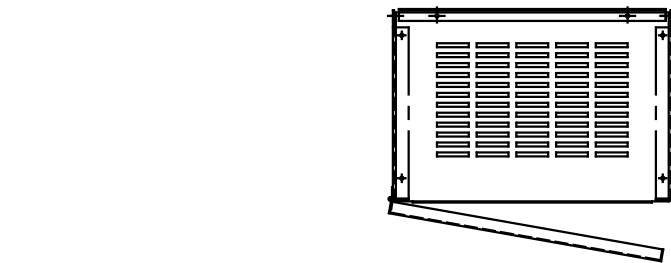


UNIT SPECIFICATIONS:					
KVAR HARMONIC	VOLT	HZ	PHASE	HP	
15	5TH	480	60	3	50
ENCLOSURE	NEMA 1- COLOR, BLACK				
APPROX.WT. LBS.	180				

SYMBOL	TCI PART NUMBER
LR	KDRG1T
TR	KTR15A65HG
CAP.	16449
Fu1, 2, 3	11307



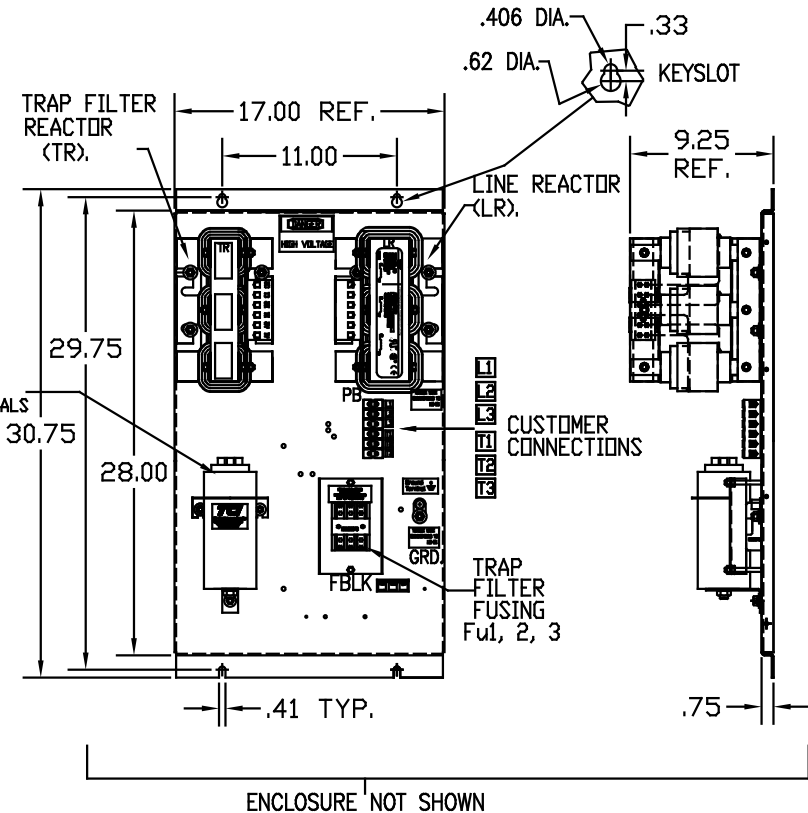
HATCHED AREAS ARE SUGGESTED
CUSTOMER WIRE AND EXIT LOCATIONS
(BOTTOM ENTRANCE ALTERNATE-CONSULT TCI)

PB-POWER INPUT BLOCK:

1 AWG thru 4 AWG 35 IN-LBS. MAX.
6 AWG thru 14 AWG 30 IN-LBS. MAX.
16 AWG thru 22 AWG 25 IN-LBS. MAX.

GROUND LUG:

WIRE RANGE-1/0 TO #14 AWG.
TIGHTENING TORQUE 200 IN-LB.



ENCLOSURE NOT SHOWN

SEE 25077 FOR SCHEMATIC

CUSTOMER IS RESPONSIBLE FOR INSTALLATION
TO MEET ALL NATIONAL AND LOCAL ELECTRICAL CODES.

TOLERANCES EXCEPT AS NOTED:				7878 N. 86th STREET MILWAUKEE, WI 53224
NO.	REVISION	DATE	BY	
				HG50AW01ST, HG7 STANDARD 50HP, 480/3/60, TYPE 1 DSW 03/08/05 102559DG SCALE TO FIT