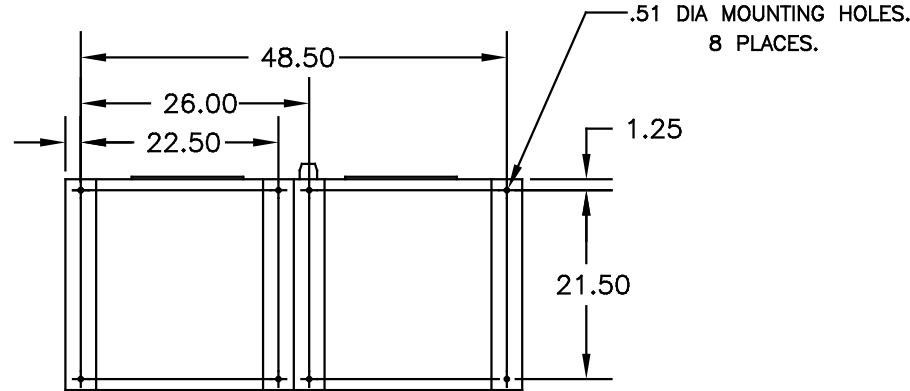
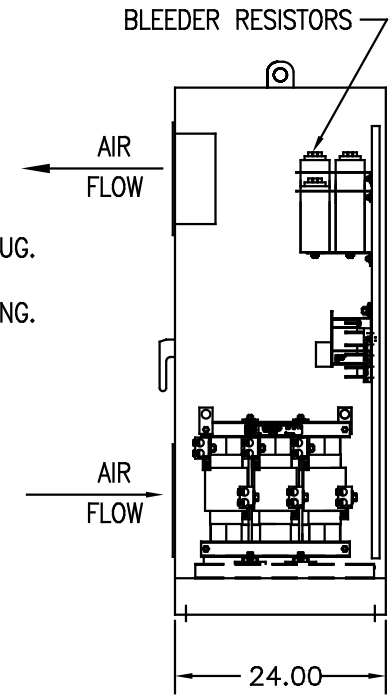
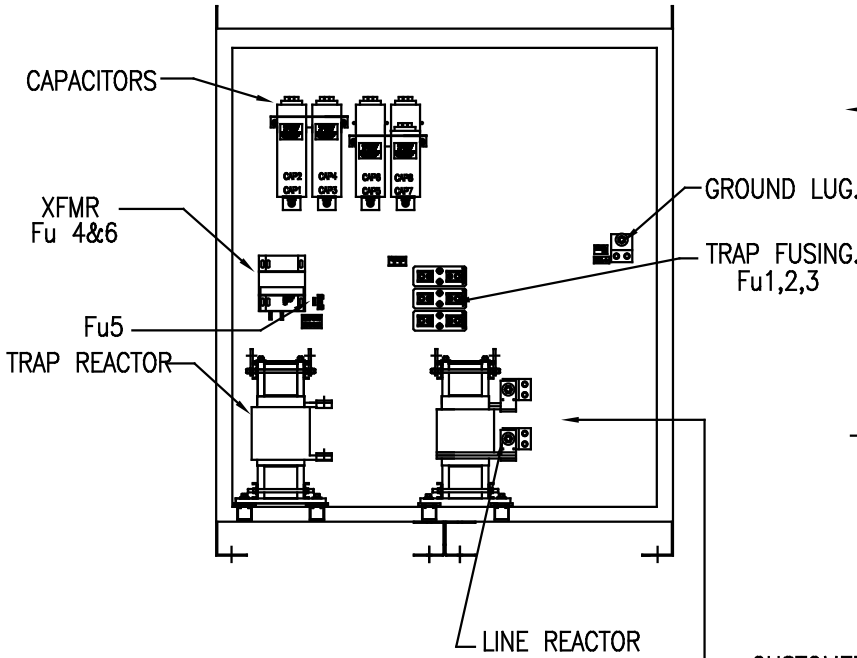
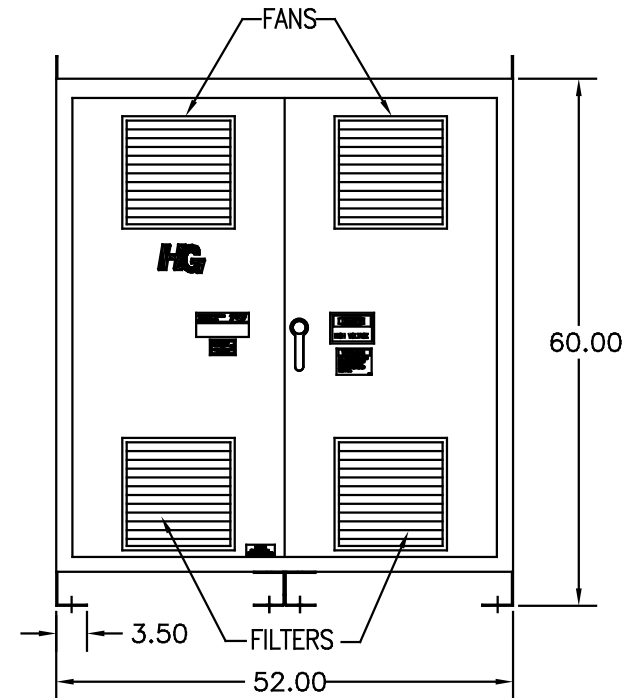


UNIT SPECIFICATIONS:					
KVAR	HARMONIC	VOLT	HZ	PHASE	HP
150	5TH	480	60	3	500
ENCLOSURE		NEMA 1 - COLOR, BLACK			
APPROX.WT. LBS.		1020			

SYMBOL	TCI PART NUMBER
LR	KDRX5T
TR	KTR150A65HG
CAP1 -7 (20 KVAR)	23123
CAP8 (10 KVAR)	16448
XFMR.	23899
Fu1a;2a;3a	13232
Fu4,6	14106
Fu5	23977



CUSTOMER CONNECTIONS:  

L1	L2	L3
T1	T2	T3

CUSTOMER CONNECTIONS:  
 WIRE RANGE-TWO 600MCM-2  
 TIGHTENING TORQUE 500 IN-LB.

GROUND LUG:  
 WIRE RANGE-TWO 600MCM-2  
 TIGHTENING TORQUE 500 IN-LB.

FOR SCHEMATIC SEE 25092

CUSTOMER IS RESPONSIBLE FOR INSTALLATION TO MEET ALL NATIONAL AND LOCAL ELECTRICAL CODES

NO	REVISION	DATE	BY	TOLERANCES (UNLESS AS NOTED)	DATE BY	DATE	DATE	DATE	DATE
				.XX ±.03	DSW	06/10/05			
				.XXX±.01					
				FRACTIONAL ± 1/32					
				ANGULAR ± 1/2°					

**TCI** 7878 N. 86th STREET  
 MILWAUKEE, WI 53224

HG500AW01ST, HG7 STANDARD  
 500HP, 480/3/60, TYPE 1

102685DG  
 C

SHT. 1 OF 1