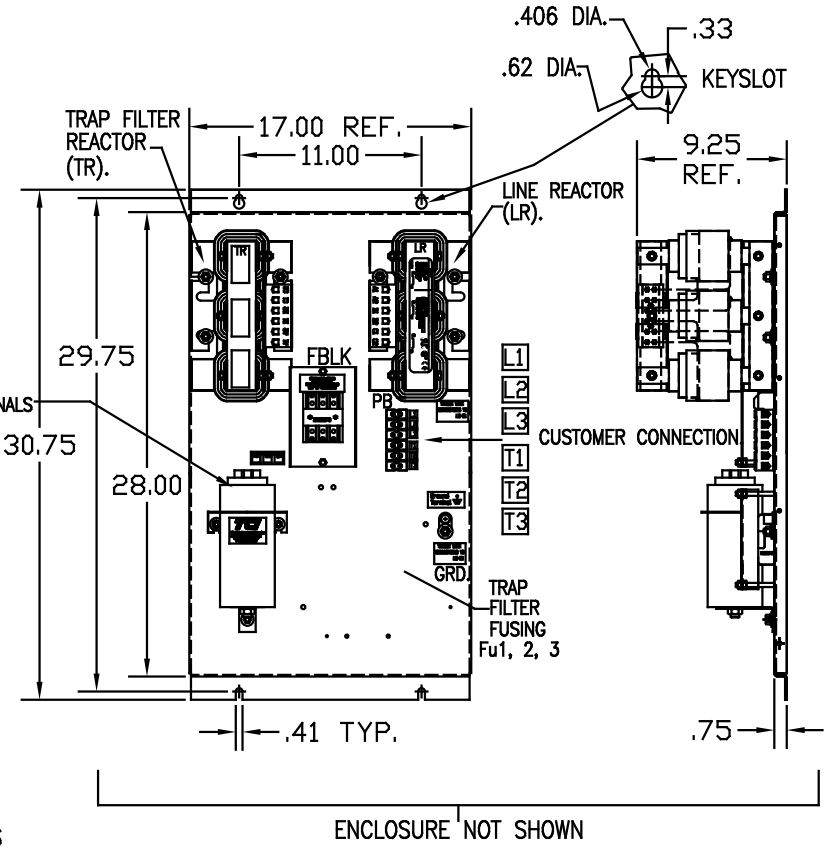
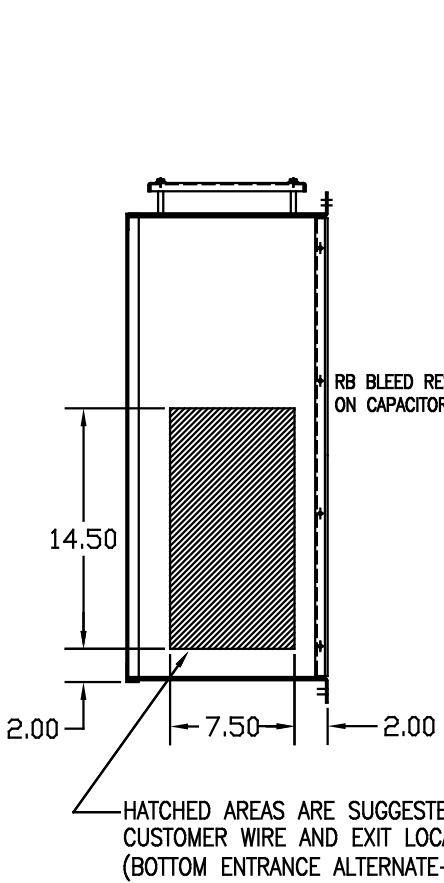
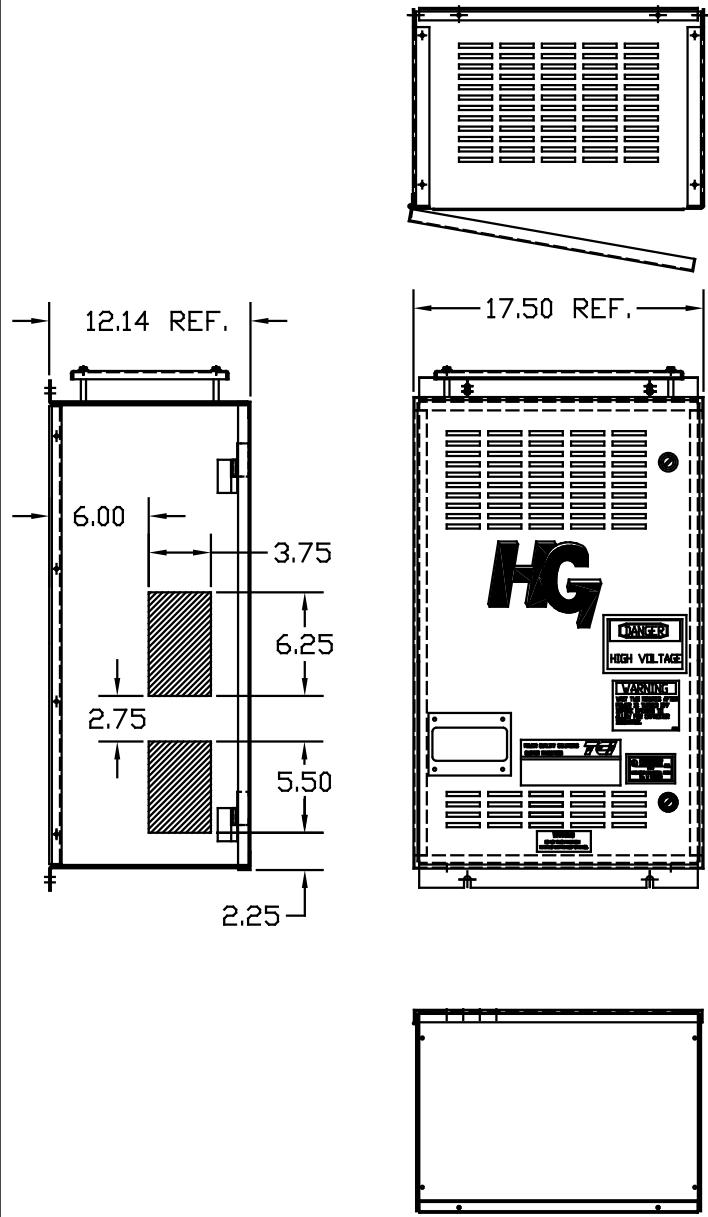


UNIT SPECIFICATIONS:					
KVAR	HARMONIC	VOLT	HZ	PHASE	HP
15	5TH	480	60	3	40
ENCLOSURE		NEMA 1- COLOR, BLACK			
APPROX.WT. LBS.		170			

SYMBOL	TCI PART NUMBER
LR	KDRI1T
TR	KTR15A65HG
CAP.	16449
Fu1, 2, 3	11307



PB-POWER INPUT BLOCK:
 1 AWG thru 4 AWG 35 IN-LBS. MAX.
 6 AWG thru 14 AWG 30 IN-LBS. MAX.
 16 AWG thru 22 AWG 25 IN-LBS. MAX.

GROUND LUG:
 WIRE RANGE-1/0 TO #14 AWG.
 TIGHTENING TORQUE 200 IN-LB.

SEE 25077 FOR SCHEMATIC

CUSTOMER IS RESPONSIBLE FOR INSTALLATION
 TO MEET ALL NATIONAL AND LOCAL ELECTRICAL CODES.

NO.	REVISION	DATE	BY	TOLERANCES UNLESS OTHERWISE SPECIFIED	SCALE	DATE	BY	DATE	BY	NO.
				.XX ± .03 .XXX ± .01	TO FIT	03/08/05	DSW	03/08/05	DSW	102558DG
				FRACTIONAL ± 1/32						
				ANGULAR ± 1/2°						

TCI 7878 N. 86th STREET
 MILWAUKEE, WI 53224

HG40AW01ST, HG7 STANDARD
 40HP, 480/3/60, TYPE 1

102558DG
 SH. 1 OF 1