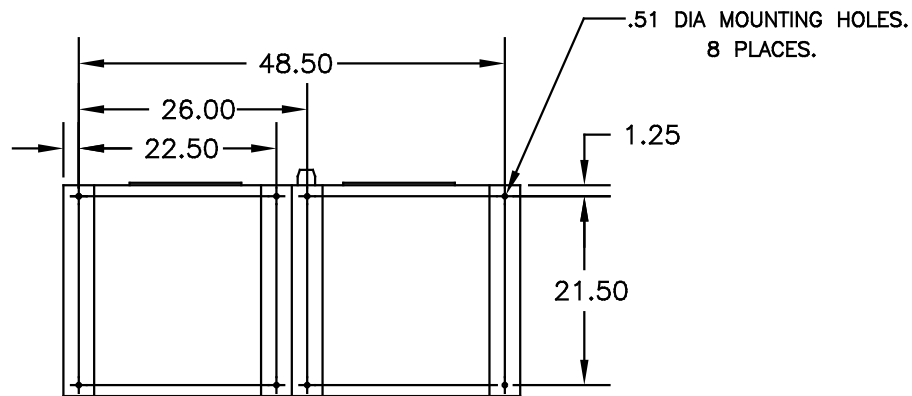
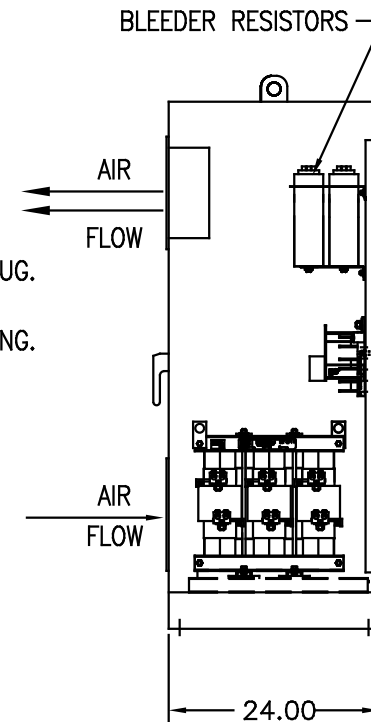
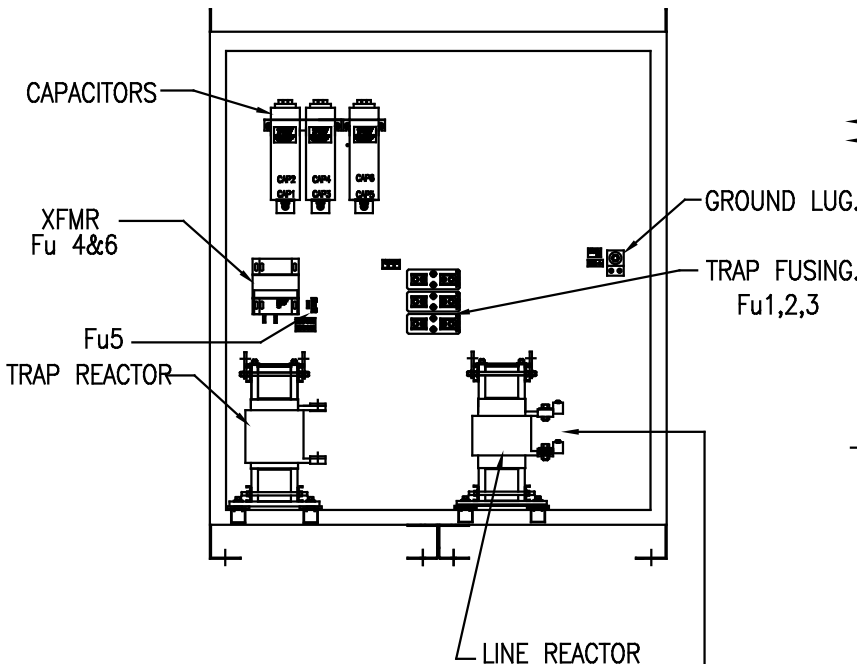
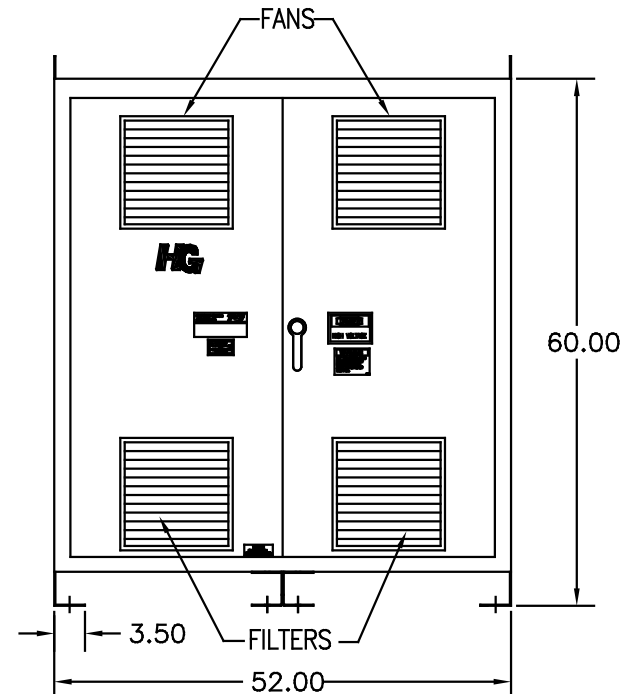


UNIT SPECIFICATIONS:						
KVAR	HARMONIC	VOLT	HZ	PHASE	HP	
120	5TH	480	60	3	400	
ENCLOSURE		NEMA 1 - COLOR, BLACK				
APPROX.WT. LBS.		985				

SYMBOL	TCI PART NUMBER
LR	KDRX3T
TR	KTR120A65HG
CAP1 -6 (20 KVAR)	23123
XFMR.	23899
Fu1,2,3a	12462
Fu4,6	14106
Fu5	23977



CUSTOMER CONNECTIONS:

L1	L2	L3
T1	T2	T3

FOR SCHEMATIC SEE 25092

CUSTOMER IS RESPONSIBLE FOR INSTALLATION TO MEET ALL NATIONAL AND LOCAL ELECTRICAL CODES

CUSTOMER CONNECTIONS:
 WIRE RANGE-TWO 350MCM-4
 TIGHTENING TORQUE 275 IN-LB.

GROUND LUG:
 WIRE RANGE-TWO 350MCM-4
 TIGHTENING TORQUE 275 IN-LB.

NO	REVISION	DATE	BY	TOLERANCES (UNLESS AS NOTED)	DESIGN
				.XX ±.03	
				.XXX±.01	
				FRACTIONAL ± 1/32	
				ANGULAR ± 1/2°	

TCI 7878 N. 86th STREET
MILWAUKEE, WI 53224

HG400AW01ST, HG7 STANDARD
400HP, 480/3/60, TYPE 1

DATE BY DSW DATE 06/09/09 DRW. NO. C 102681DG
SCALE TO FIT APPROV.

SHT. 1 OF 1