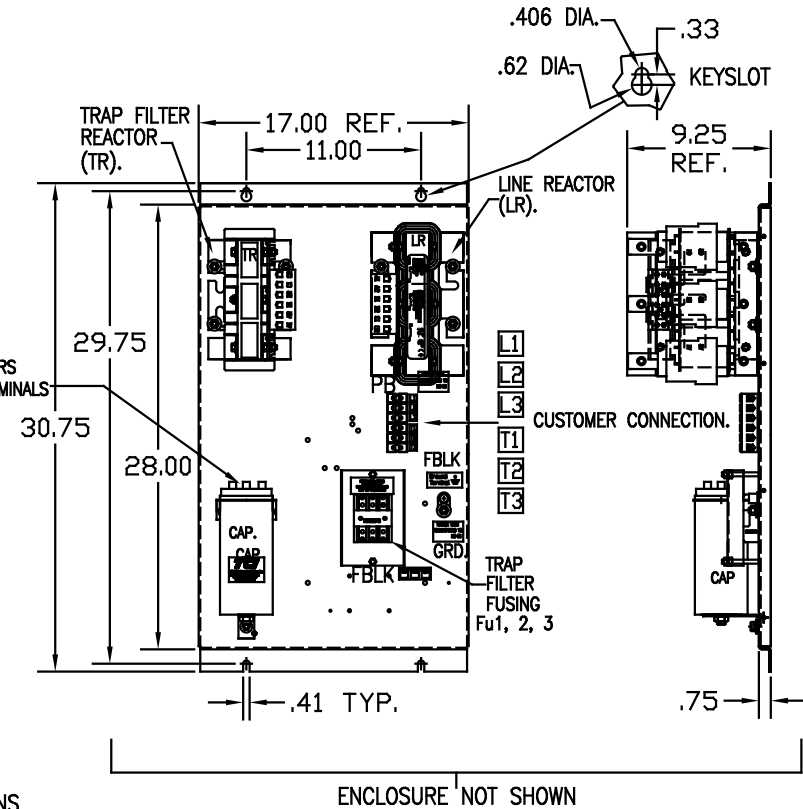
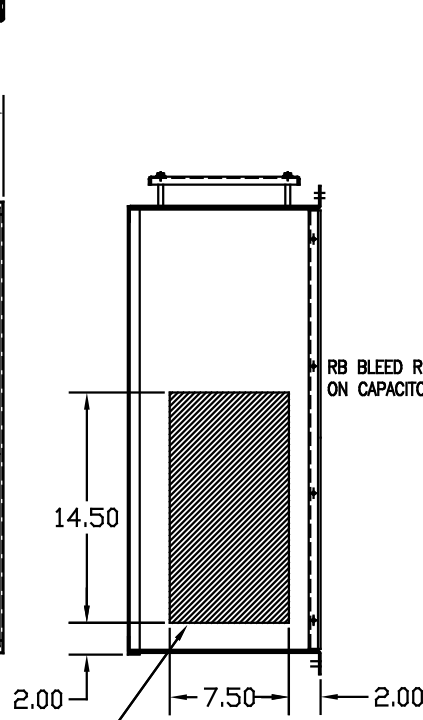
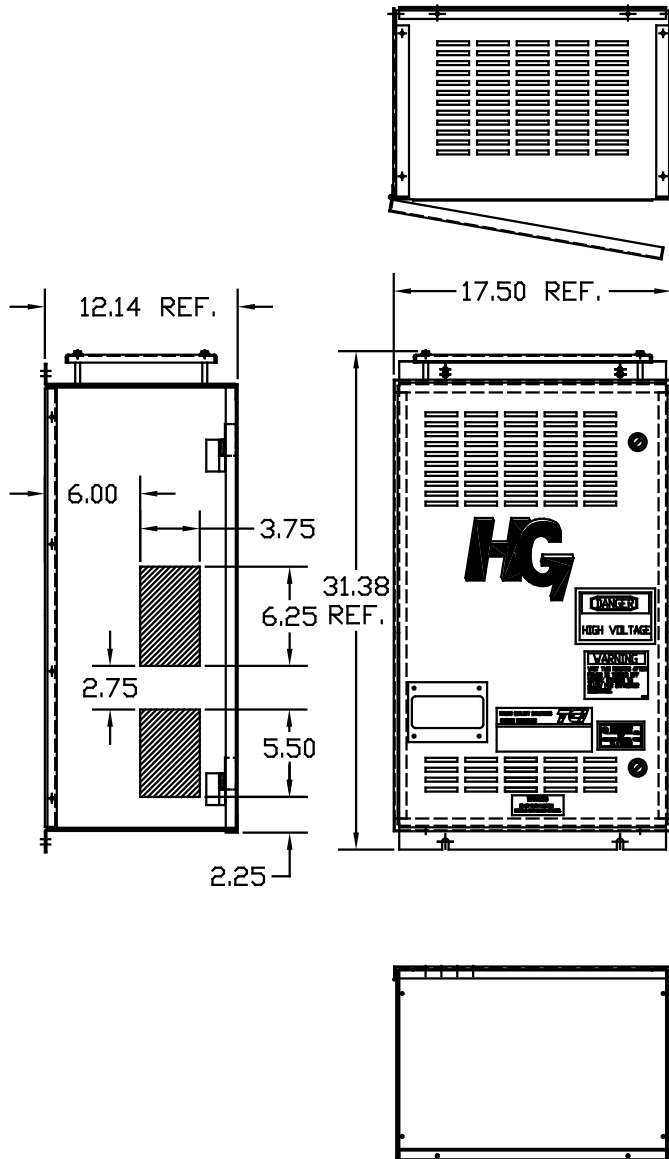


UNIT SPECIFICATIONS:						
KVAR	HARMONIC	VOLT	HZ	PHASE	HP	
10	5TH	480	60	3	30	
ENCLOSURE		NEMA 1- COLOR, BLACK				
APPROX.WT. LBS.		130				

SYMBOL	TCI PART NUMBER
LR	KDRH1T
TR	KTR10A65HG
CAP.	16448
Fu1, 2, 3	11307



HATCHED AREAS ARE SUGGESTED CUSTOMER WIRE AND EXIT LOCATIONS (BOTTOM ENTRANCE ALTERNATE-CONSULT TCI)

ENCLOSURE NOT SHOWN

SEE 25077 FOR SCHEMATIC

CUSTOMER IS RESPONSIBLE FOR INSTALLATION TO MEET ALL NATIONAL AND LOCAL ELECTRICAL CODES.

PB-POWER INPUT BLOCK:
WIRE RANGE-#18 TO #4 AWG.
TIGHTENING TORQUE 20 IN.-LB.

GROUND LUG:
WIRE RANGE-1/0 TO #14 AWG.
TIGHTENING TORQUE 200 IN.-LB.

				TOLERANCES EXCEPT AS NOTED:	7878 N. 86th STREET MILWAUKEE, WI 53224
				DECIMAL	
				.XX ± .03	HG30AW01ST, HG7 STANDARD 30HP, 480/3/60, TYPE 1 DESIGNED BY DSW DATE 03/08/05 DWG. NO. 102557DG SCALE TO FIT APPROVAL C SHI.1 OF 1
				.XXX ± .01	
				FRACTIONAL ± 1/32	
				ANGULAR ± 1/2°	
NO	REVISION	DATE	BY		