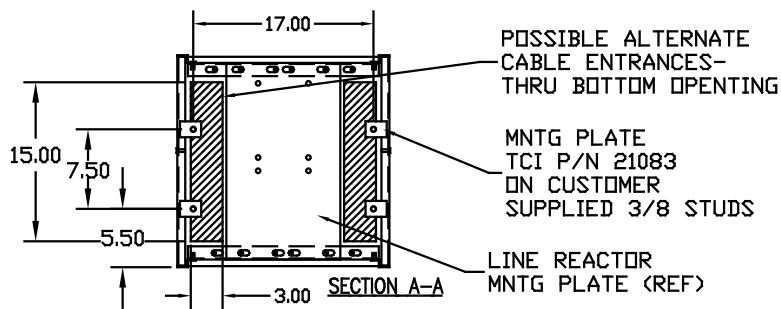
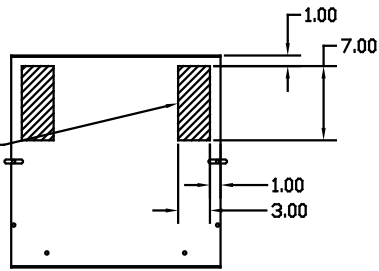


POSSIBLE ALTERNATE CABLE ENTRANCES- REQUIRES MODIFICATION OF AIR FLOW DEFLECTOR

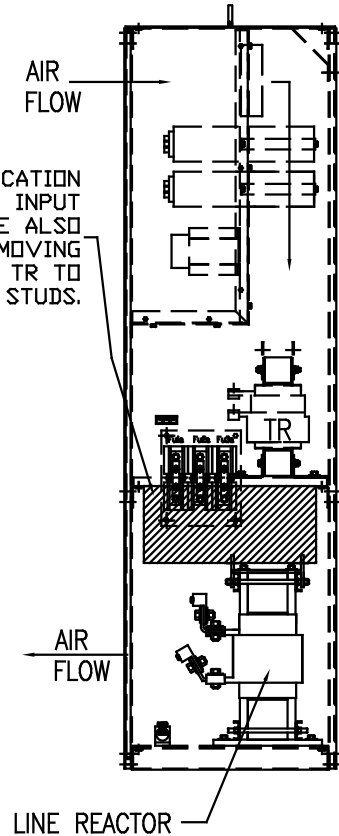
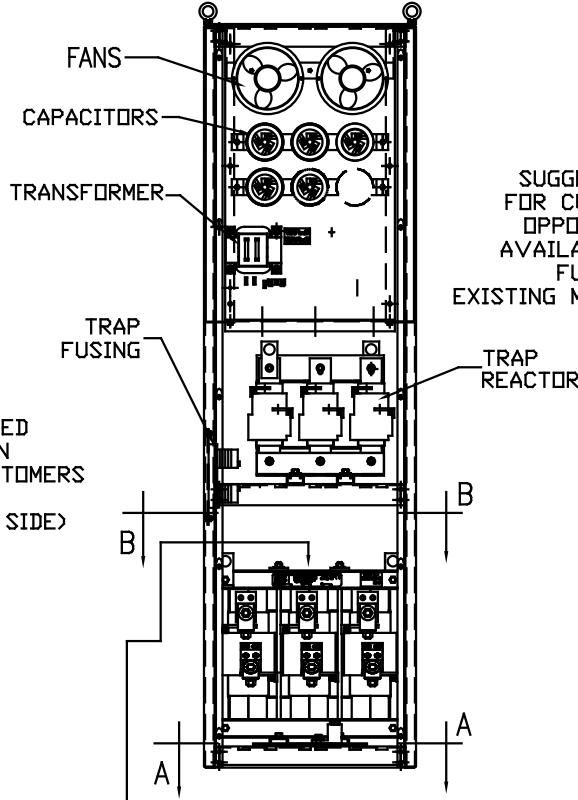
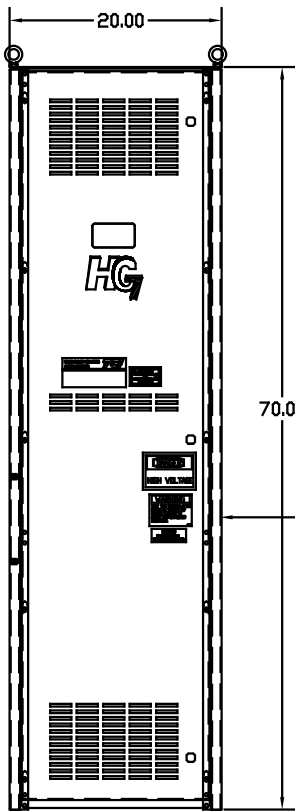
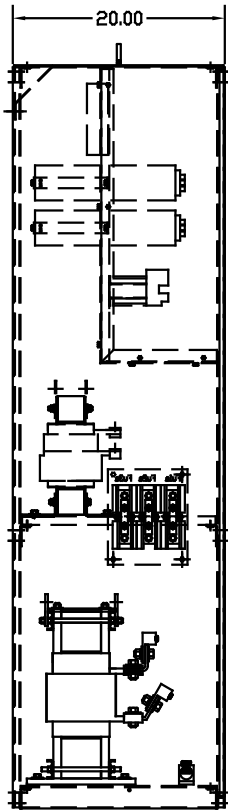


CUSTOMER CONNECTIONS:

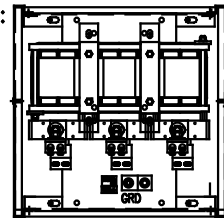
WIRE RANGE-TWO 350MCM-4
TIGHTENING TORQUE 275 IN-LB.

GROUND LUG:

WIRE RANGE-ONE 600MCM-4
TWO 250MCM-1/0
TIGHTENING TORQUE 500 IN-LB.



CUSTOMER CONNECTIONS:



SECTION B-B

FOR SCHEMATIC SEE 25092

CUSTOMER IS RESPONSIBLE FOR INSTALLATION TO MEET ALL NATIONAL AND LOCAL ELECTRICAL CODES

UNIT SPECIFICATIONS:

KVAR	HARMONIC	VOLT	HZ	PHASE	HP
90	5TH	480	60	3	300
ENCLOSURE		NEMA 1 - COLOR BLACK			
APPROX.WT. LBS.		600			

SYMBOL	TCI PART NUMBER
LR	KDRX1T
TR	KTR90A65HG
CAP1 ,2 ,3 ,4 (20 KVAR)	23123
CAP 5 (10 KVAR)	16448
XFMR.	23898
Fu1a,2a,3a	11175
Fu4,6	13443
Fu5	16987

NO	REVISION	DATE	BY	TOLERANCES EXCEPT AS NOTED	7878 N. 86th STREET MILWAUKEE, WI 53224
				.XX ± .03 .XXX ± .01 FRACTIONAL ± 1/32 ANGULAR ± 1/2°	
				DRN BY DSW DATE 03/08/05 DWG. NO. 102567DG SCALE TO FIT APPROVAL C SHI.1 OF 1	