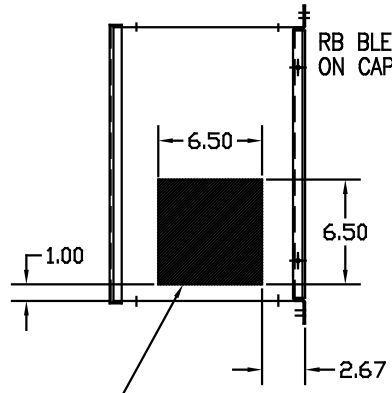
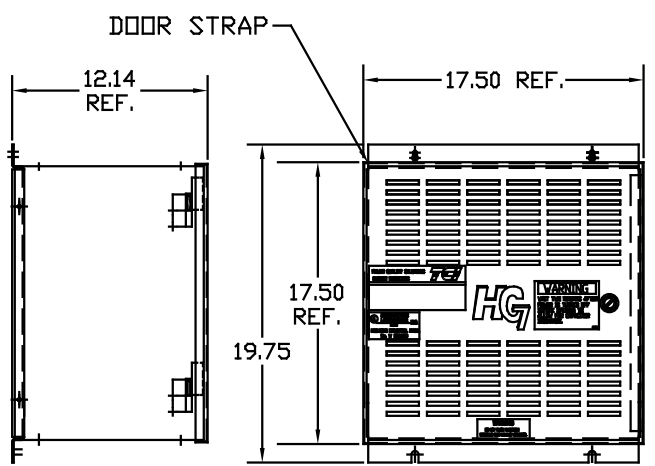
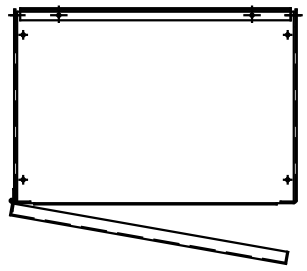
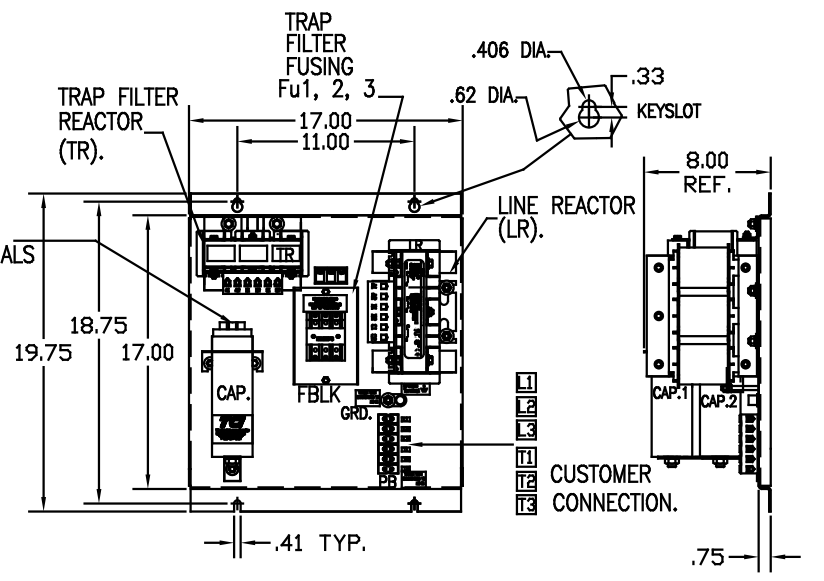
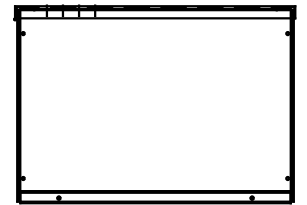


UNIT SPECIFICATIONS:					
KVAR	HARMONIC	VOLT	HZ	PHASE	HP
8	5TH	480	60	3	25
ENCLOSURE		NEMA 1- COLOR, BLACK			
APPROX.WT. LBS.		90			

SYMBOL	TCI PART NUMBER
LR	KDRF3T
TR	KTR8A65HG
CAP1	16446
CAP2	16447
Fu1, 2, 3	11306



HATCHED AREAS ARE SUGGESTED CUSTOMER WIRE AND EXIT LOCATIONS (BOTTOM ENTRANCE ALTERNATE-CONSULT TCI)



ENCLOSURE NOT SHOWN

SEE 25077 FOR SCHEMATIC

CUSTOMER IS RESPONSIBLE FOR INSTALLATION TO MEET ALL NATIONAL AND LOCAL ELECTRICAL CODES.

PB-POWER INPUT BLOCK:
WIRE RANGE-#18 TO #4 AWG.
TIGHTENING TORQUE 20 IN.-LB.

GROUND LUG:
WIRE RANGE-1/0 TO #14 AWG.
TIGHTENING TORQUE 200 IN.-LB.

				TOLERANCES EXCEPT AS NOTED:	7878 N. 86th STREET MILWAUKEE, WI 53224
				DECIMAL	
				XX ± .03	
				.XXX ± .01	
				FRACTIONAL ± 1/32	
MOVED POWER BLOCK	2/21/06	DSW		ANGULAR ± 1/2°	
NO	REVISION	DATE	BY		