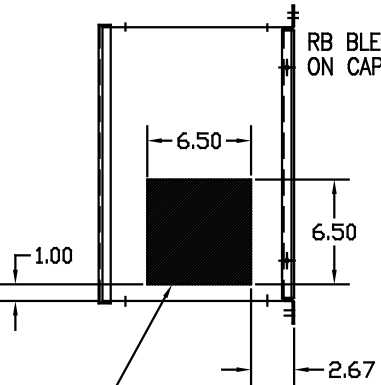
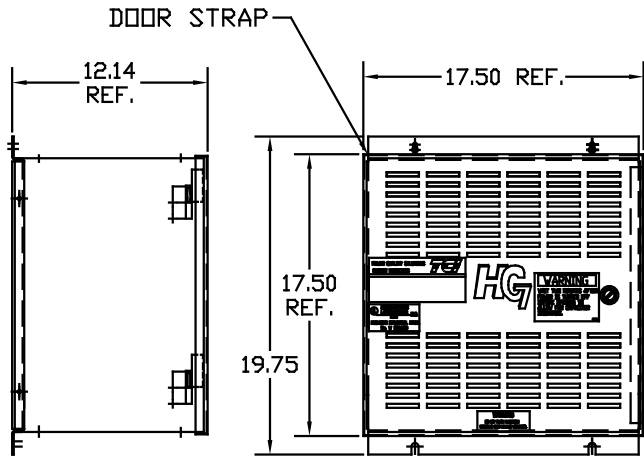
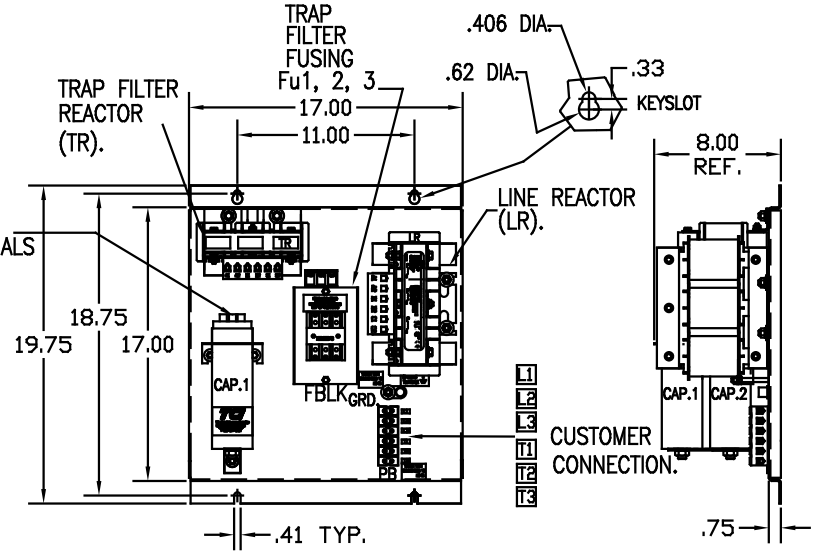
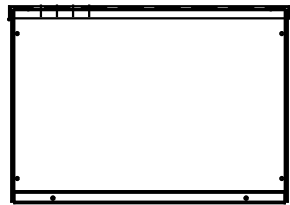


UNIT SPECIFICATIONS:					
KVAR HARMONIC	VOLT	HZ	PHASE	HP	
6	5TH	480	60	3	20
ENCLOSURE	NEMA 1- COLOR, BLACK				
APPROX.WT. LBS.	85				

SYMBOL	TCI PART NUMBER
LR	KDRF2T
TR	KTR6A65HG
CAP1, CAP2.	16446
Fu1, 2, 3	15752



HATCHED AREAS ARE SUGGESTED CUSTOMER WIRE AND EXIT LOCATIONS (BOTTOM ENTRANCE ALTERNATE-CONSULT TCI)



ENCLOSURE NOT SHOWN

SEE 25077 FOR SCHEMATIC  
 CUSTOMER IS RESPONSIBLE FOR INSTALLATION  
 TO MEET ALL NATIONAL AND LOCAL ELECTRICAL CODES.

PB-POWER INPUT BLOCK:  
 WIRE RANGE-#18 TO #4 AWG.  
 TIGHTENING TORQUE 20 IN-LB.

GROUND LUG:  
 WIRE RANGE-1/0 TO #14 AWG.  
 TIGHTENING TORQUE 200 IN-LB.

TOLERANCES EXCEPT AS NOTED:				TCI	
				7878 N. 86th STREET MILWAUKEE, WI 53224	
			XX ±.03	HG20AW01ST, HG7 STANDARD	
			.XXX±.01	20HP, 480/3/60, TYPE 1	
			FRACTIONAL ± 1/32	DRG. BY DSW	DATE 03/08/05
			ANGULAR ± 1/2°	SCALE TO FIT	APPROV. C 102555DG
NO	REVISION	DATE	BY	SHT. 1 OF 1	