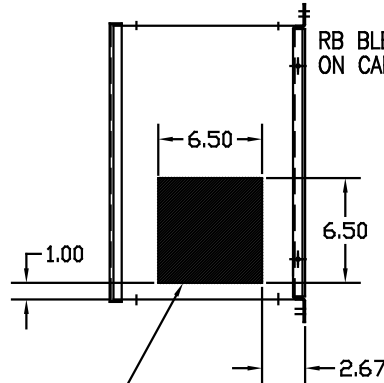
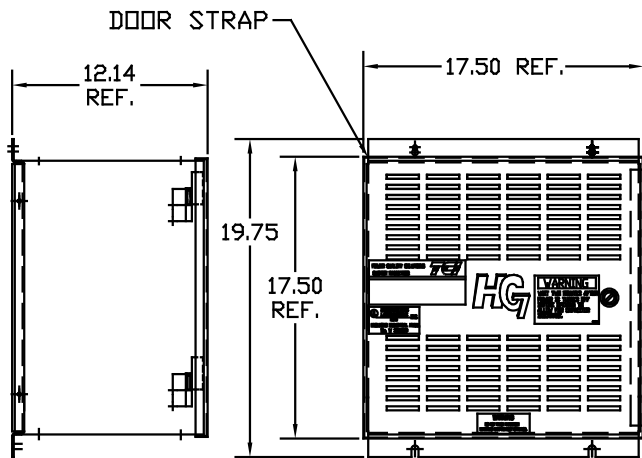
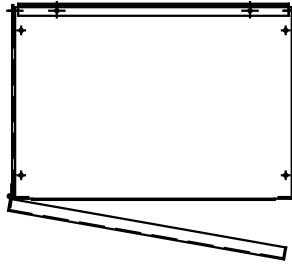
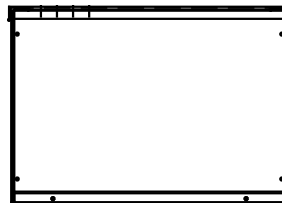


| UNIT SPECIFICATIONS: | | | | | |
|----------------------|----------|----------------------|----|-------|----|
| KVAR | HARMONIC | VOLT | HZ | PHASE | HP |
| 3 | 5TH | 480 | 60 | 3 | 10 |
| ENCLOSURE | | NEMA 1- COLOR. BLACK | | | |
| APPROX.WT. LBS. | | 66 | | | |

| SYMBOL | TCI PART NUMBER |
|-----------|-----------------|
| LR | KDRE1T |
| TR | KTR3A65HG |
| CAP. | 16446 |
| Fu1, 2, 3 | 11262 |

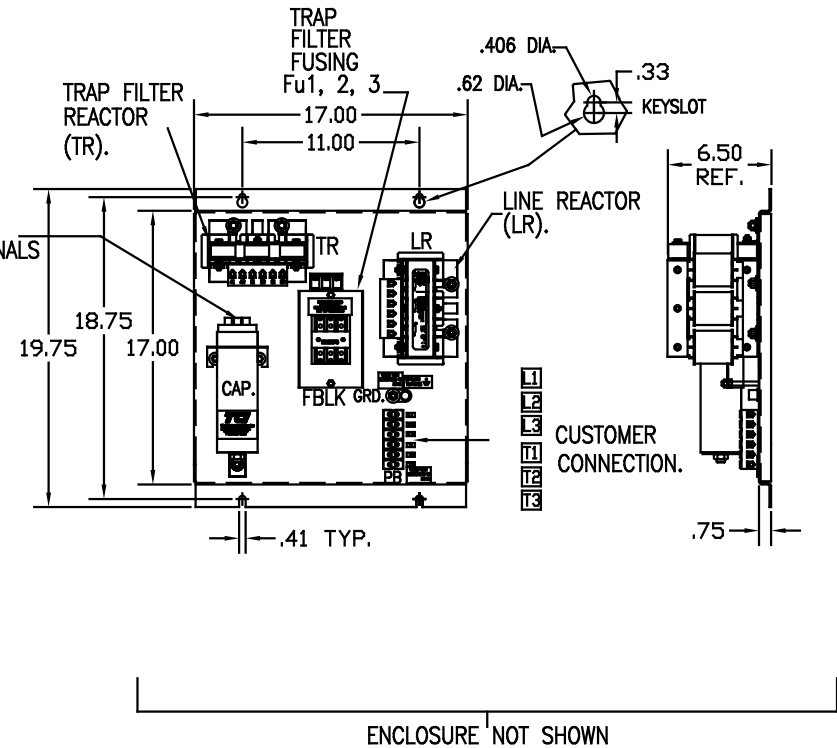


HATCHED AREAS ARE SUGGESTED
CUSTOMER WIRE AND EXIT LOCATIONS
(BOTTOM ENTRANCE ALTERNATE-CONSULT TCI)



PB-POWER INPUT BLOCK:
WIRE RANGE-#18 TO #4 AWG.
TIGHTENING TORQUE 20 IN-LB.

GROUND LUG:
WIRE RANGE-1/0 TO #14 AWG.
TIGHTENING TORQUE 200 IN-LB.



SEE 25077 FOR SCHEMATIC

CUSTOMER IS RESPONSIBLE FOR INSTALLATION
TO MEET ALL NATIONAL AND LOCAL ELECTRICAL CODES.

| TOLERANCES EXCEPT AS NOTED | | | | 7878 N. 86th STREET MILWAUKEE, WI 53224 |
|-------------------------------|----------|------|----|-------------------------------------------------------------------------|
| | | | | |
| | | | | DRAWN BY DSW DATE 03/08/05 DWG. NO. 102553DG SCALE TO FIT APPROVAL C |
| NO | REVISION | DATE | BY | MOVE POWER BLOCK 2/21/06 DSW DATE 2/21/06 BY DSW |