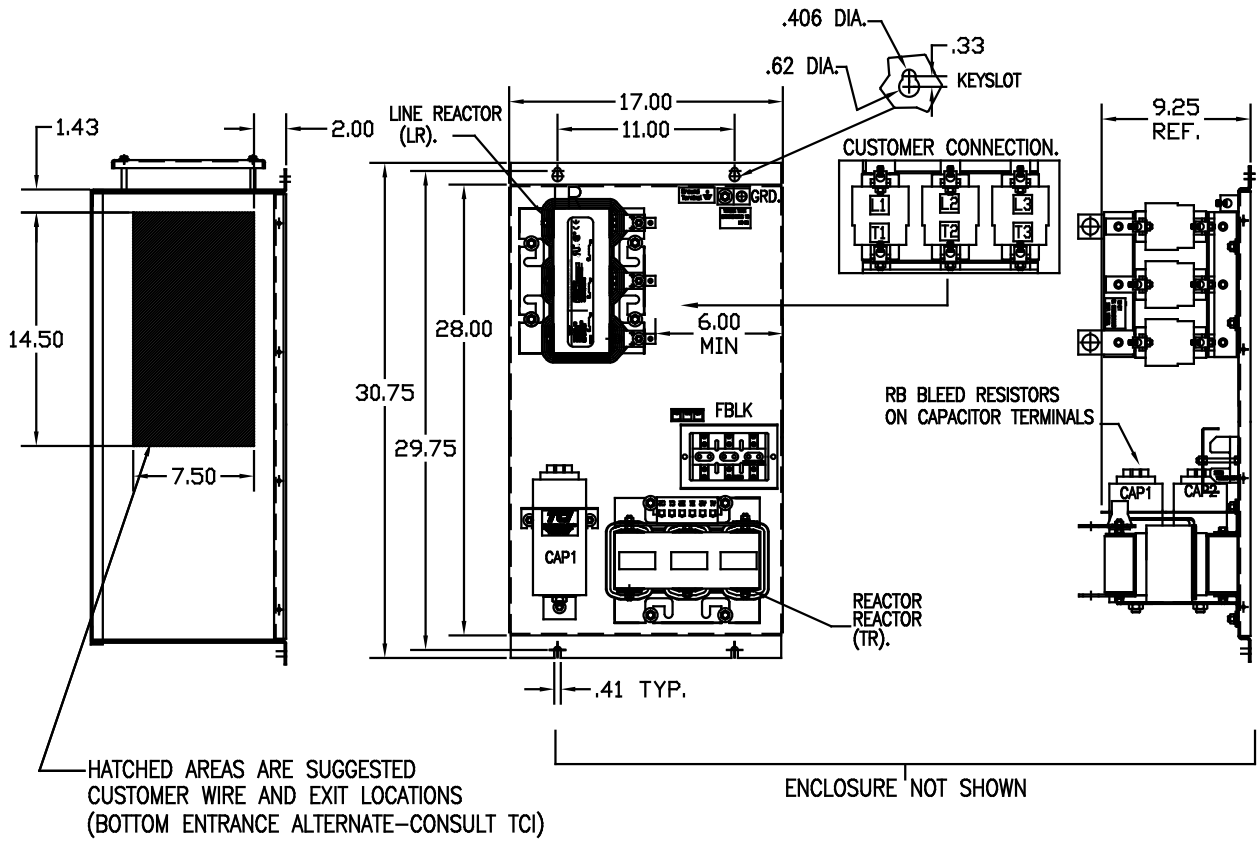
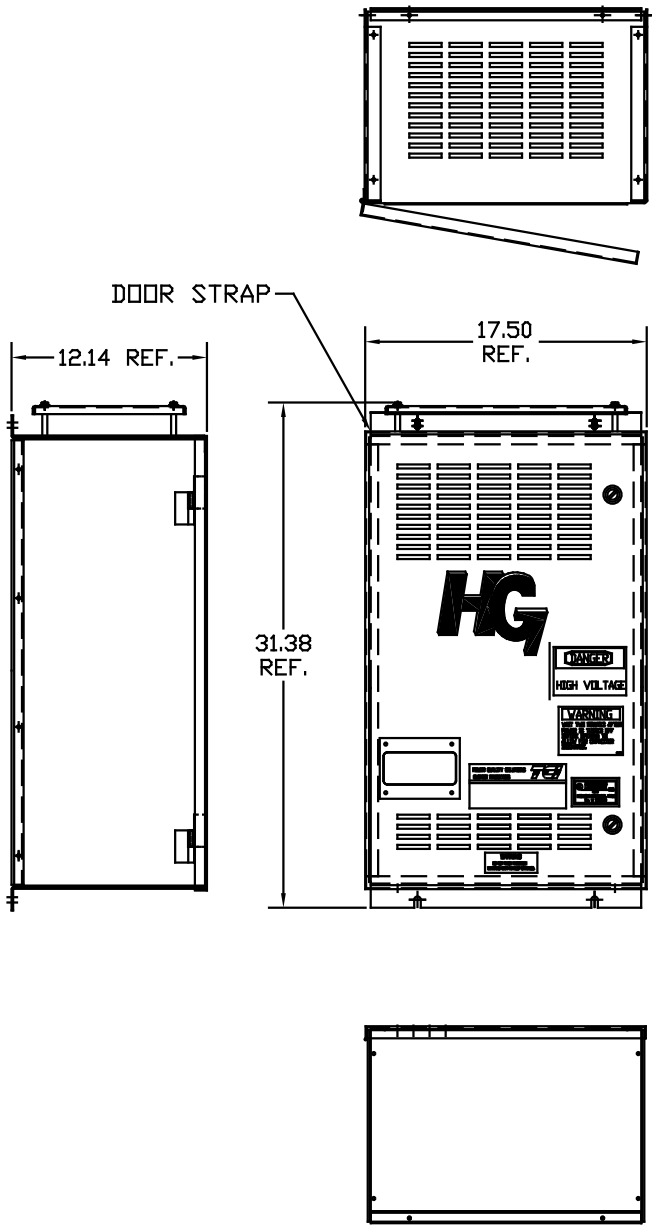


UNIT SPECIFICATIONS:					
KVAR HARMONIC	VOLT	HZ	PHASE	HP	
30	5TH	480	60	3	100
ENCLOSURE	NEMA 1- COLOR, BLACK				
APPROX.WT. LBS.	235				

SYMBOL	TCI PART NUMBER
LR	KDRJ1T
TR	KTR30A65HG
CAP1, CAP2.	16449
Fu1, 2, 3	11006



HATCHED AREAS ARE SUGGESTED
CUSTOMER WIRE AND EXIT LOCATIONS
(BOTTOM ENTRANCE ALTERNATE-CONSULT TCI)

FOR SCHEMATIC SEE 25078
CUSTOMER IS RESPONSIBLE FOR INSTALLATION
TO MEET ALL NATIONAL AND LOCAL ELECTRICAL CODES.

CUSTOMER CONNECTIONS
WIRE RANGE-2/0-6
TIGHTENING TORQUE 120 IN-LB.

GROUND LUG:
WIRE RANGE-2/0-6
TIGHTENING TORQUE 120 IN-LB.

TOLERANCES EXCEPT AS NOTED:				TCI 7878 N. 86th STREET MILWAUKEE, WI 53224
DECIMAL	FRACTIONAL	ANGULAR	SCALE	
.XX ± .03	.XXX ± .01	± 1/32	TO FIT	HG100AW01ST, HG7 STANDARD 100HP, 480/3/60, TYPE 1
		± 1/2°		
NO	REVISION	DATE	BY	SHI.1 OF 1