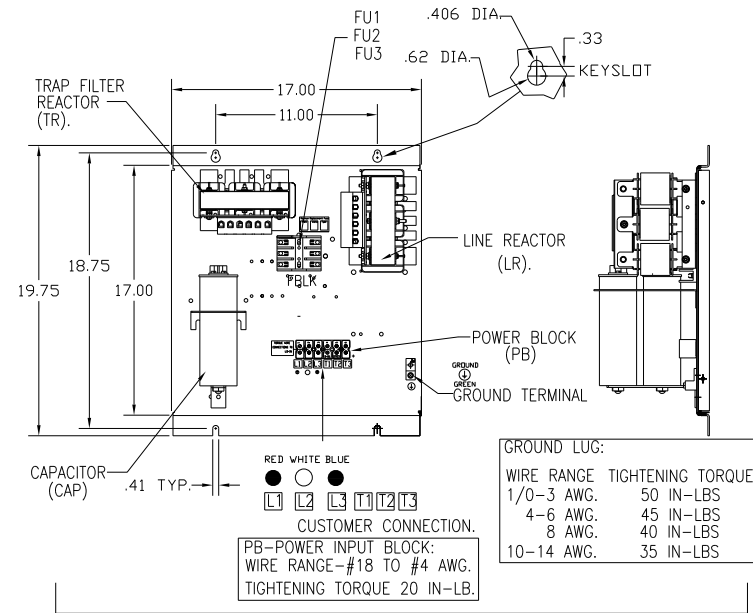
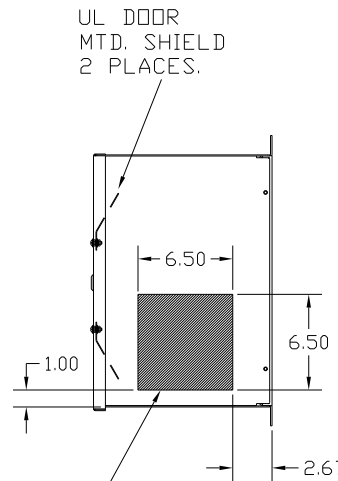
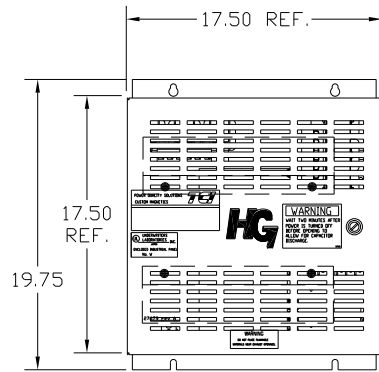
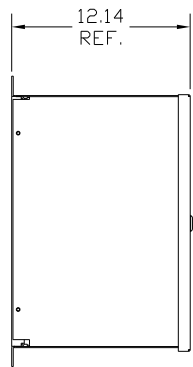
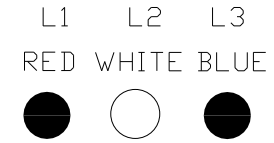


UNIT SPECIFICATIONS:					
KW	HARMONIC	VOLT	HZ	PHASE	FLA
9.3	5TH	400	50	3	20
ENCLOSURE		NEMA 1			
APPROX.WT. LBS.		72			

SYMBOL	TCI PART NUMBER
LR	KDRE32T
TR	KTR3L55HG
CAP, 2. (3 KVAR)	KCAP3A6A
Fu1, 2, 3	22923

SEE DWG# 27709 FOR SCHEMATIC



GROUND LUG:

WIRE RANGE	TIGHTENING TORQUE
1/0-3 AWG.	50 IN-LBS
4-6 AWG.	45 IN-LBS
8 AWG.	40 IN-LBS
10-14 AWG.	35 IN-LBS

HATCHED AREAS ARE SUGGESTED CUSTOMER WIRE AND EXIT LOCATIONS (BOTTOM ENTRANCE ALTERNATE-CONSULT TCI)

CUSTOMER IS RESPONSIBLE FOR INSTALLATION TO MEET ALL NATIONAL AND LOCAL ELECTRICAL CODES.

				TOLERANCES (EXCEPT AS NOTED): DECIMAL	7878 N. 86th STREET MILWAUKEE, WI 53224 HG9LW01ST, 9.3 kW 400/3/50, ENCLOSED.
				.XX ± .03 .XXX ± .01	
				FRACTIONAL ± 1/32	
				ANGULAR ± 1/2°	
A	AS BUILT	5/12/11	DSW		DRN. BY DSW DATE 5/12/11 DWG. NO. 104655DG
NO	REVISION	DATE	BY	SCALE TO FIT	APRVD. C SHT. 1 OF 1