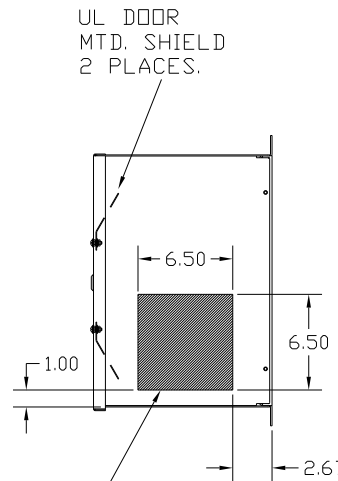
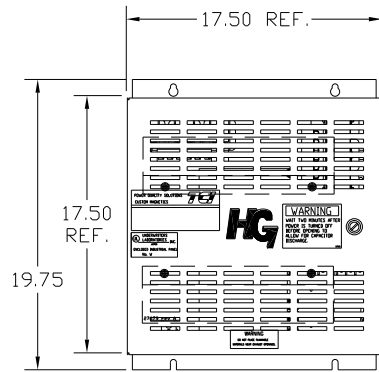
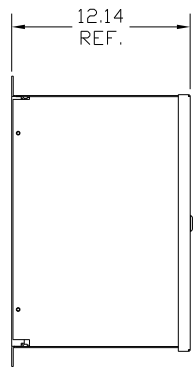


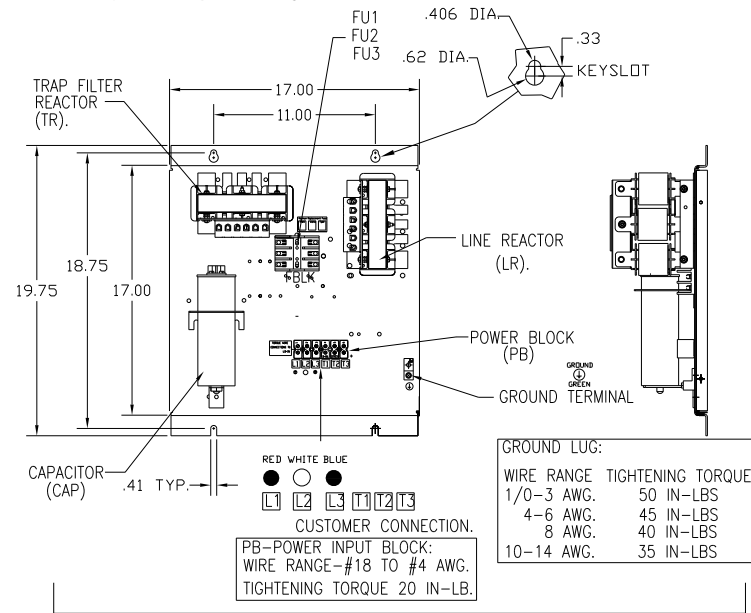
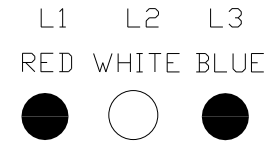
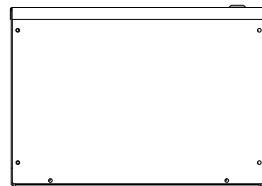
UNIT SPECIFICATIONS:					
KW	HARMONIC	VOLT	HZ	PHASE	FLA
7.5	5TH	400	50	3	16
ENCLOSURE		NEMA 1			
APPROX.WT. LBS.		69			

SYMBOL	TCI PART NUMBER
LR	KDRE31T
TR	KTR2L55HG
CAP1. (5 KVAR)	KCAP5A6A
Fu1, 2, 3	22927

SEE DWG# 27709 FOR SCHEMATIC



HATCHED AREAS ARE SUGGESTED CUSTOMER WIRE AND EXIT LOCATIONS (BOTTOM ENTRANCE ALTERNATE-CONSULT TCI)



GROUND LUG:

WIRE RANGE	TIGHTENING TORQUE
1/0-3 AWG.	50 IN-LBS
4-6 AWG.	45 IN-LBS
8 AWG.	40 IN-LBS
10-14 AWG.	35 IN-LBS

RED WHITE BLUE
 CUSTOMER CONNECTION.
 PB-POWER INPUT BLOCK:
 WIRE RANGE-#18 TO #4 AWG.
 TIGHTENING TORQUE 20 IN-LB.

ENCLOSURE NOT SHOWN

CUSTOMER IS RESPONSIBLE FOR INSTALLATION TO MEET ALL NATIONAL AND LOCAL ELECTRICAL CODES.

				TOLERANCES (EXCEPT AS NOTED):	TCI 7878 N. 86th STREET MILWAUKEE, WI 53224	
				DECIMAL		
				.XX ± .03		
				.XXX ± .01		
				FRACTIONAL ± 1/32		
				ANGULAR ± 1/2°		
A	AS BUILT	5/12/11	DSW	HG7LW01ST, 7.5KW 400/3/50, ENCLOSED.		
NO	REVISION	DATE	BY	DRN. BY DSW	DATE 5/12/11	DWG. NO. 104654DG
				SCALE TO FIT	APRVD.	SHT. 1 OF 1