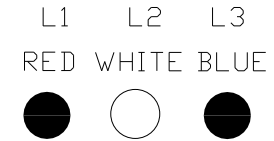
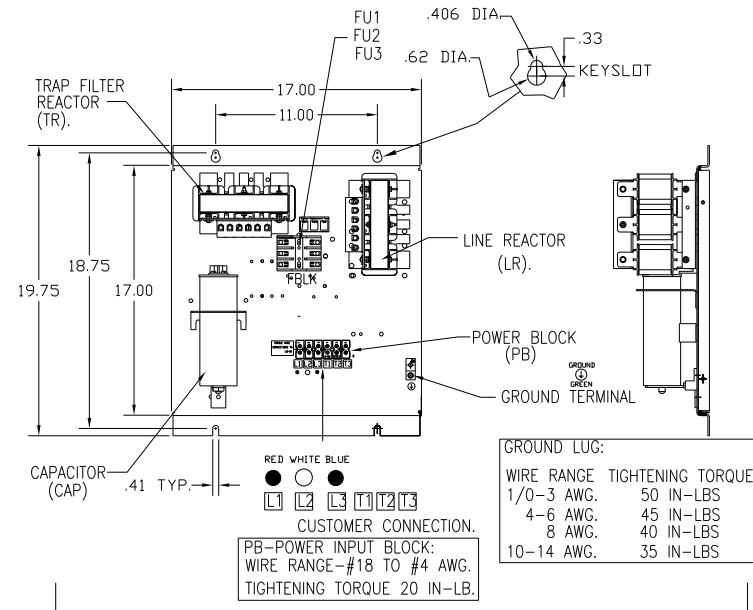
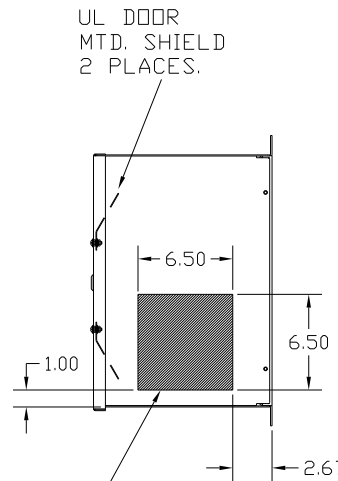
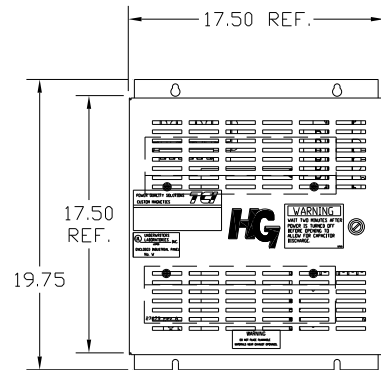
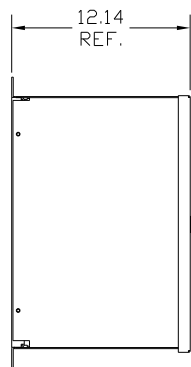


| UNIT SPECIFICATIONS: | | | | | |
|----------------------|----------|--------|----|-------|-----|
| KW | HARMONIC | VOLT | HZ | PHASE | FLA |
| 5.5 | 5TH | 400 | 50 | 3 | 12 |
| ENCLOSURE | | NEMA 1 | | | |
| APPROX.WT. LBS. | | 63 | | | |

| SYMBOL | TCI PART NUMBER |
|-----------------|-----------------|
| LR | KDRC31T |
| TR | KTR2L55HG |
| CAP1. (<5 KVAR) | KCAP5A6A |
| Fu1, 2, 3 | 23407 |



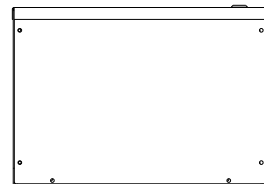
SEE DWG# 27709 FOR SCHEMATIC



GROUND LUG:

| WIRE RANGE | TIGHTENING TORQUE |
|------------|-------------------|
| 1/0-3 AWG. | 50 IN-LBS |
| 4-6 AWG. | 45 IN-LBS |
| 8 AWG. | 40 IN-LBS |
| 10-14 AWG. | 35 IN-LBS |

HATCHED AREAS ARE SUGGESTED CUSTOMER WIRE AND EXIT LOCATIONS (BOTTOM ENTRANCE ALTERNATE-CONSULT TCI)



CUSTOMER IS RESPONSIBLE FOR INSTALLATION TO MEET ALL NATIONAL AND LOCAL ELECTRICAL CODES.

| | | | | TOLERANCES (EXCEPT AS NOTED): | TCI 7878 N. 86th STREET MILWAUKEE, WI 53224 | |
|----|----------|---------|-----|-------------------------------|---|-------------|
| | | | | DECIMAL | | |
| | | | | .XX ± .03 | | |
| | | | | .XXX ± .01 | | |
| | | | | FRACTIONAL | HG5LW01ST, 5.5KW 400/3/50, ENCLOSED. | |
| | | | | ± 1/32 | | |
| A | AS BUILT | 5/12/11 | DSW | ANGULAR | ± 1/2° | |
| NO | REVISION | DATE | BY | | | |
| | | | | SCALE | TO FIT | |
| | | | | DRN. BY | DATE | DWG. NO. |
| | | | | DSW | 5/12/11 | 104653DG |
| | | | | SCALE | APRVD. | SHT. 1 OF 1 |