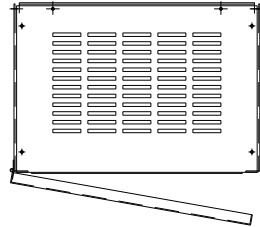
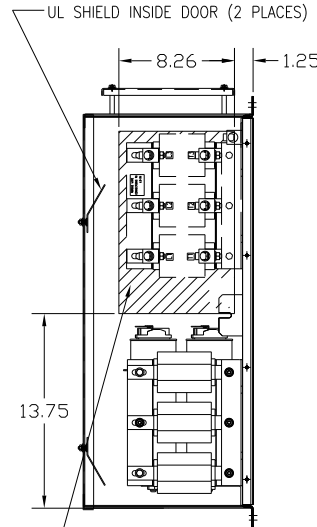
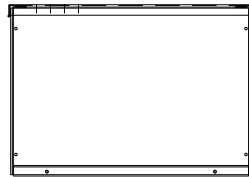
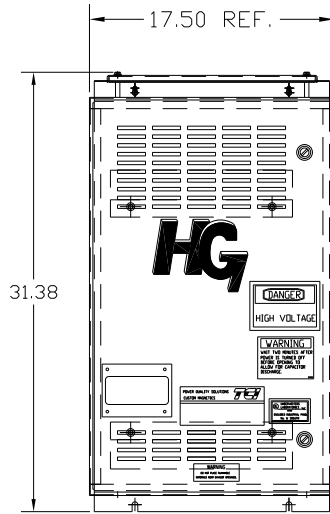
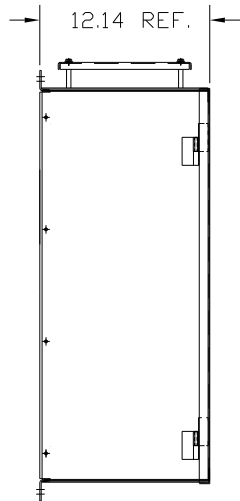


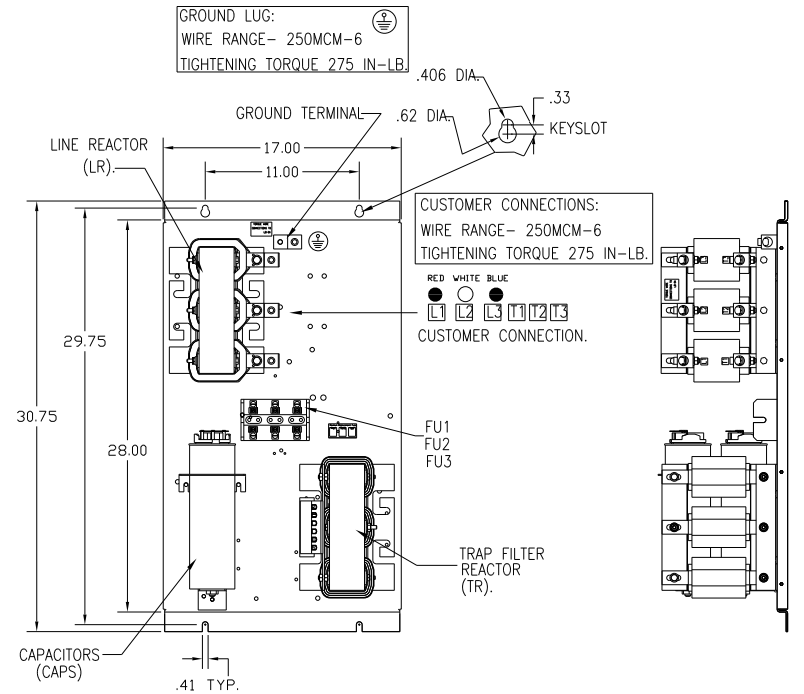
UNIT SPECIFICATIONS:					
KW	HARMONIC	VOLT	HZ	PHASE	FLA
55	5TH	400	50	3	105
ENCLOSURE		NEMA 1			
APPROX.WT. LBS.		188			



SYMBOL	TCI PART NUMBER
LR	KDRG34T
TR	KTR22L55HG
CAP1, 2 (20 KVAR)	KCAP20A6B
Fu1, 2, 3	11006



HATCHED AREAS ARE SUGGESTED  
CUSTOMER WIRE AND EXIT LOCATIONS  
(BOTTOM ENTRANCE ALTERNATE-CONSULT TCI)



ENCLOSURE NOT SHOWN  
CUSTOMER IS RESPONSIBLE FOR INSTALLATION  
TO MEET ALL NATIONAL AND LOCAL ELECTRICAL CODES.

SEE DRAWING# 27709 FOR SCHEMATIC

				TOLERANCES (EXCEPT AS NOTED)		7878 N. 86th STREET MILWAUKEE, WI 53224	
				DECIMAL		HG55LW01ST, 55KW 400/3/50, ENCLOSED.	
				XX ± .03 XXX ± .01		DRN. BY DSW DATE 11/17/2010 DWG. NO. 104512DG	
				FRACTIONAL ± 1/32		SCALE TO FIT	
A AS BUILT		11/04/10		DSW		APRVD	
NO REVISION		DATE		BY		SHT. 1 OF 1	