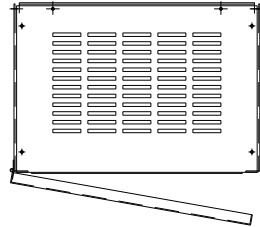
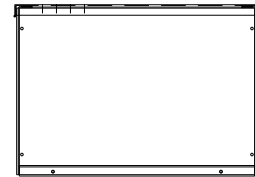
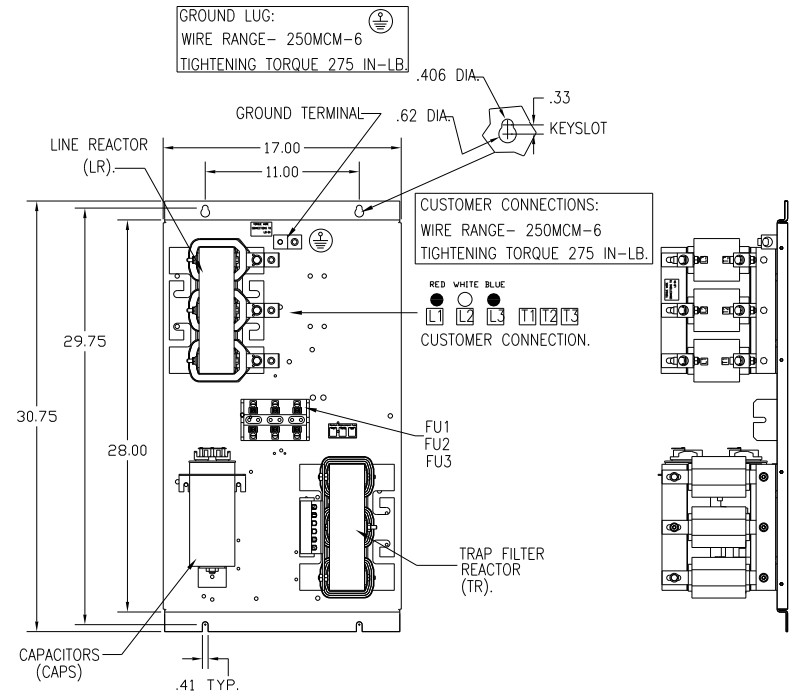
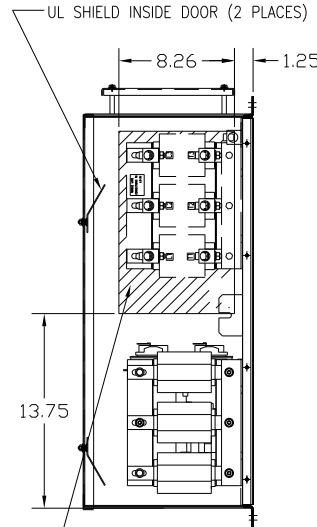
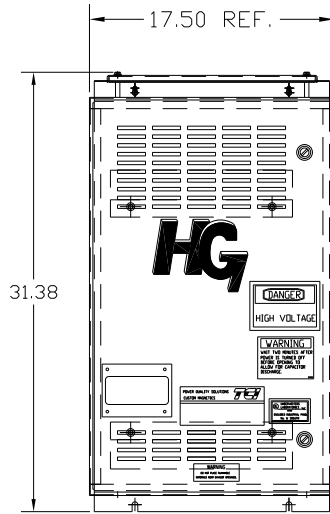
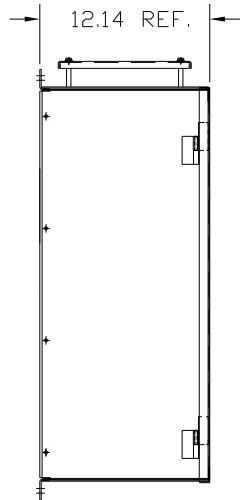


UNIT SPECIFICATIONS:					
KW	HARMONIC	VOLT	HZ	PHASE	FLA
45	5TH	400	50	3	90
ENCLOSURE		NEMA 1			
APPROX.WT. LBS.		186			



SYMBOL	TCI PART NUMBER
LR	KDRG33T
TR	KTR18L55HG
CAP1. (15 KVAR)	KCAP15A6B
CAP2. (15 KVAR)	KCAP15A6B
Fu1, 2, 3	22926



HATCHED AREAS ARE SUGGESTED CUSTOMER WIRE AND EXIT LOCATIONS (BOTTOM ENTRANCE ALTERNATE-CONSULT TCI)

ENCLOSURE NOT SHOWN  
 CUSTOMER IS RESPONSIBLE FOR INSTALLATION TO MEET ALL NATIONAL AND LOCAL ELECTRICAL CODES.

TOLERANCES (EXCEPT AS NOTED)		TOLERANCES (EXCEPT AS NOTED)		TOLERANCES (EXCEPT AS NOTED)	
DECIMAL		DECIMAL		DECIMAL	
.XX ± .03		.XX ± .03		.XX ± .03	
.XXX ± .01		.XXX ± .01		.XXX ± .01	
FRACTIONAL		FRACTIONAL		FRACTIONAL	
± 1/32		± 1/32		± 1/32	
ANGULAR		ANGULAR		ANGULAR	
± 1/2°		± 1/2°		± 1/2°	
A	AS BUILT	11/04/10	DSW	DATE	11/17/2010
NO	REVISION	DATE	BY	SCALE	TO FIT
				7878 N. 86th STREET MILWAUKEE, WI 53224 HG45LW01ST, 45KW 400/3/50, ENCLOSED. DRN. BY DSW DATE 11/17/2010 DWG. NO. 104511DG SCALE TO FIT APRVD C SH. 1 OF 1	