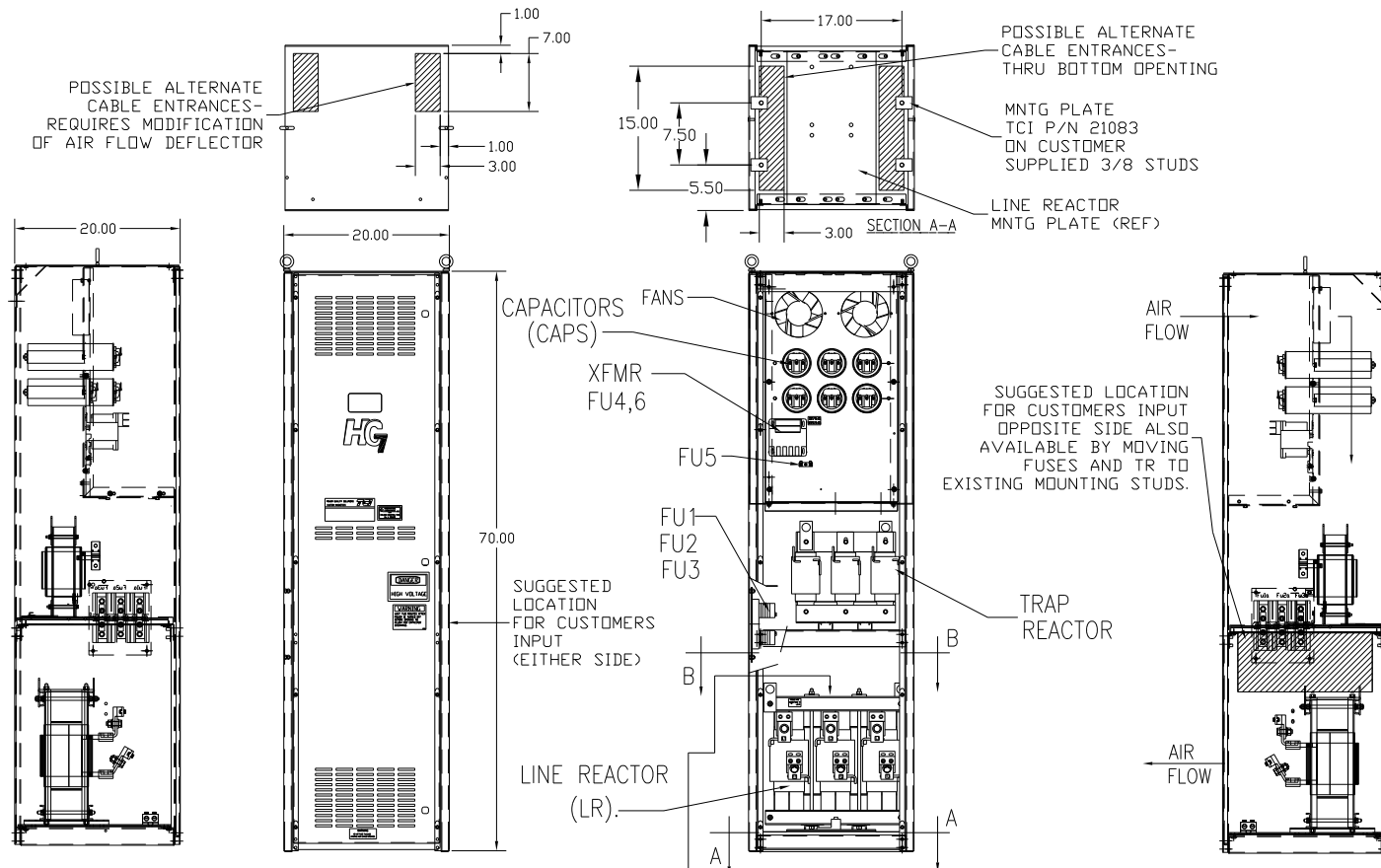


| UNIT SPECIFICATIONS: |          |        |    |       |     |
|----------------------|----------|--------|----|-------|-----|
| KW                   | HARMONIC | VOLT   | HZ | PHASE | FLA |
| 160                  | 5TH      | 400    | 50 | 3     | 320 |
| ENCLOSURE            |          | NEMA 1 |    |       |     |
| APPROX.WT. LBS.      |          | 565    |    |       |     |




RED WHITE BLUE

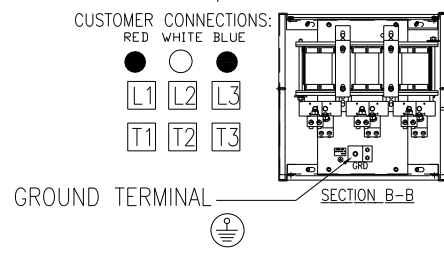
● ○ ●

L1 L2 L3

T1 T2 T3

CUSTOMER CONNECTIONS:  
 WIRE RANGE-TWO 350MCM-4  
 TIGHTENING TORQUE 275 IN.-LB.


GROUND LUG:   
 WIRE RANGE-TWO 350MCM-4  
 TIGHTENING TORQUE 275 IN.-LB.



| SYMBOL                 | TCI PART NUMBER |
|------------------------|-----------------|
| LR                     | KDRX31T         |
| TR                     | KTR64L55HG      |
| CAP1,2,3,4,5 (20 KVAR) | KCAP20A6B       |
| CAP6 (10 KVAR)         | KCAP10A6B       |
| XFMR.                  | 24393           |
| Fu1, 2, 3              | 11170           |
| Fu4,6                  | 24073           |
| Fu5                    | 24012           |

SEE DRAWING# 27709-1 FOR SCHEMATIC

CUSTOMER IS RESPONSIBLE FOR INSTALLATION TO MEET ALL NATIONAL AND LOCAL ELECTRICAL CODES.

|             |  |          |  |                              |  |  |  |
|-------------|--|----------|--|------------------------------|--|--|--|
|             |  |          |  | TOLERANCES (EXCEPT AS NOTED) |  |  7878 N. 86th STREET<br>MILWAUKEE, WI 53224 |  |
|             |  |          |  | DECIMAL                      |  | HG160LW01ST, 160KW<br>400/3/50, ENCLOSED.  |  |
|             |  |          |  | XX ±.03                      |  | DRN. BY DSW DATE 11/17/2010 DWG. NO. 104517DG  |  |
|             |  |          |  | XXX±.01                      |  | SCALE TO FIT   |  |
|             |  |          |  | FRACTIONAL ± 1/32            |  | APRVD C  |  |
| A AS BUILT  |  | 11/04/10 |  | DSW                          |  | BY   |  |
| NO REVISION |  | DATE     |  | BY                           |  | SHT. 1 OF 1  |  |
|             |  |          |  | ANGULAR ± 1/2°               |  |  |  |