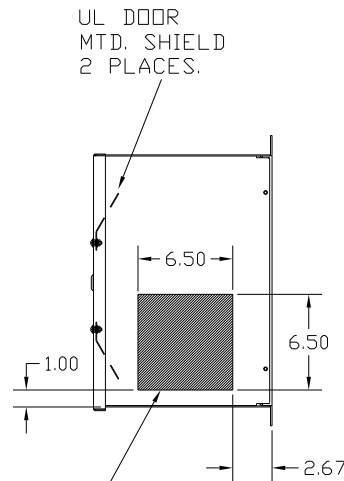
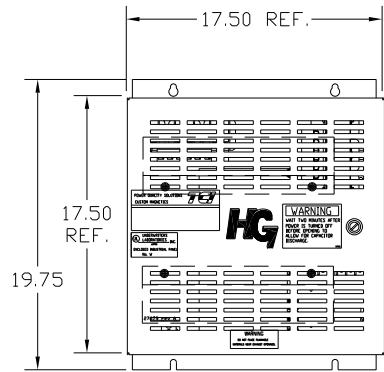
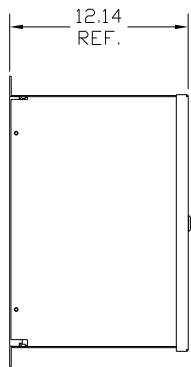
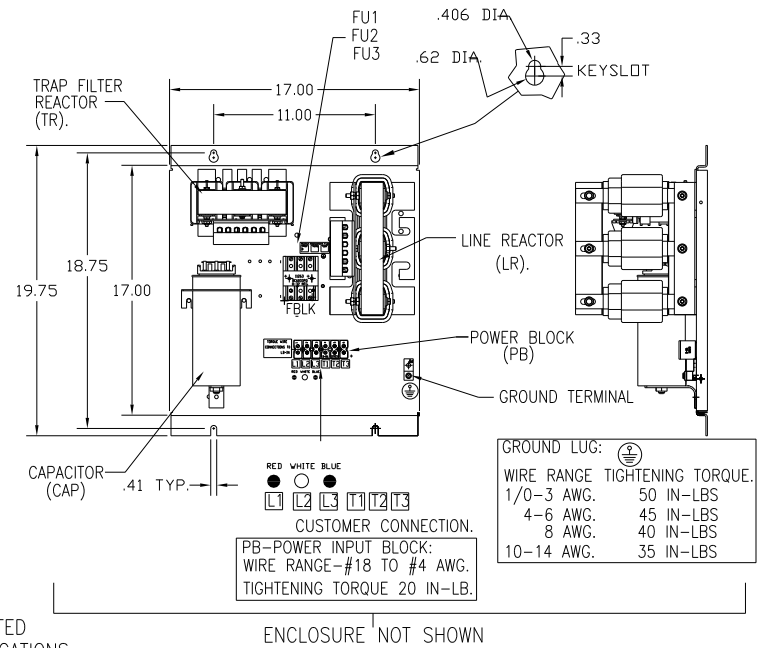
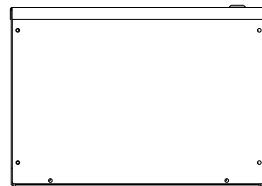


UNIT SPECIFICATIONS:					
KW	HARMONIC	VOLT	HZ	PHASE	FLA
15	5TH	400	50	3	32
ENCLOSURE		NEMA 1			
APPROX.WT. LBS.		96			

SYMBOL	TCI PART NUMBER
LR	KDRH32T
TR	KTR5L55HG
CAP1. (10 KVAR)	KCAP10A6B
Fu1, 2, 3	15752



HATCHED AREAS ARE SUGGESTED CUSTOMER WIRE AND EXIT LOCATIONS (BOTTOM ENTRANCE ALTERNATE-CONSULT TCI)



WIRE RANGE	TIGHTENING TORQUE.
1/0-3 AWG.	50 IN-LBS
4-6 AWG.	45 IN-LBS
8 AWG.	40 IN-LBS
10-14 AWG.	35 IN-LBS

SEE DRAWING# 27709 FOR SCHEMATIC

CUSTOMER IS RESPONSIBLE FOR INSTALLATION TO MEET ALL NATIONAL AND LOCAL ELECTRICAL CODES.

				TOLERANCES (EXCEPT AS NOTED):	TCI 7878 N. 86th STREET MILWAUKEE, WI 53224	
				DECIMAL		
				.XX ± .03		
				.XXX ± .01		
				FRACTIONAL ± 1/32		
				ANGULAR ± 1/2°		
A	AS BUILT	11/04/10	DSW	DRN. BY	DATE	DWG. NO.
NO	REVISION	DATE	BY	SCALE	APRVD	104507DG
				TO FIT	11/17/2010	SHT. 1 OF 1