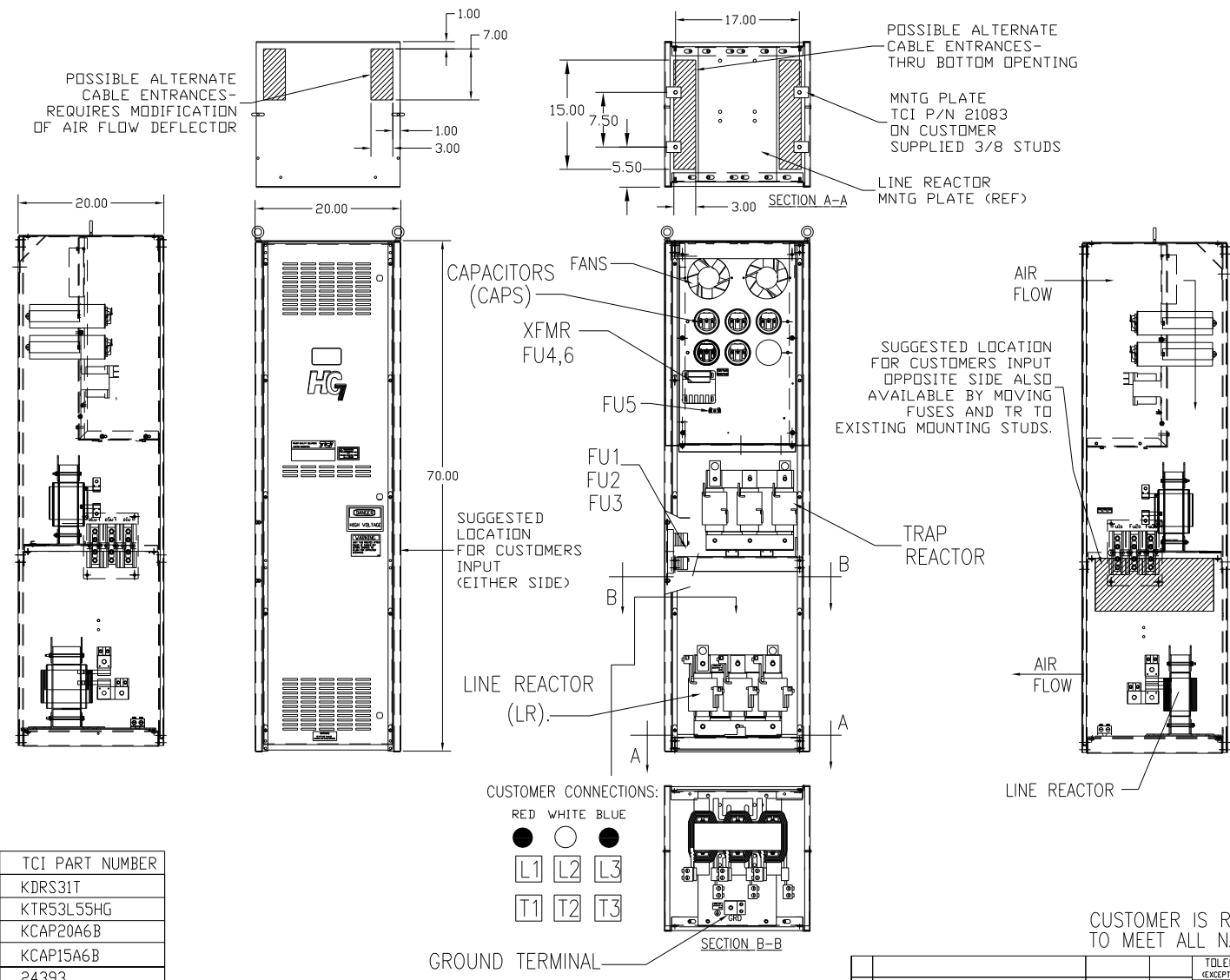


UNIT SPECIFICATIONS:					
KW	HARMONIC	VOLT	HZ	PHASE	FLA
132	5TH	400	50	3	250
ENCLOSURE		NEMA 1			
APPROX.WT. LBS.		475			



RED WHITE BLUE
 ● ○ ●
 L1 L2 L3
 T1 T2 T3

CUSTOMER CONNECTIONS:
 WIRE RANGE-TWO 350MCM-4
 TIGHTENING TORQUE 275 IN.-LB.

GROUND LUG:
 WIRE RANGE-TWO 350MCM-4
 TIGHTENING TORQUE 275 IN.-LB.

SYMBOL	TCI PART NUMBER
LR	KDRS31T
TR	KTR53L55HG
CAP1,2,3,4 (20 KVAR)	KCAP20A6B
CAP5 (15 KVAR)	KCAP15A6B
XFMR.	24393
Fu1, 2, 3	11170
Fu4,6	24073
Fu5	24012

SEE DRAWING# 27709-1 FOR SCHEMATIC

CUSTOMER IS RESPONSIBLE FOR INSTALLATION TO MEET ALL NATIONAL AND LOCAL ELECTRICAL CODES.

		TOLERANCES (EXCEPT AS NOTED)		7878 N. 86th STREET MILWAUKEE, WI 53224 HG132LW01ST, 132KW 400/3/50, ENCLOSED.
		DECIMAL		
		XX ±.03 XXX ±.01		
		FRACTIONAL		DRN. BY DSW DATE 11/17/2010 DWG. NO. 104516DG SCALE TO FIT APRVD C
		ANGULAR ± 1/2°		
A	AS BUILT	11/04/10	DSW	
NO	REVISION	DATE	BY	