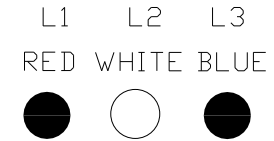
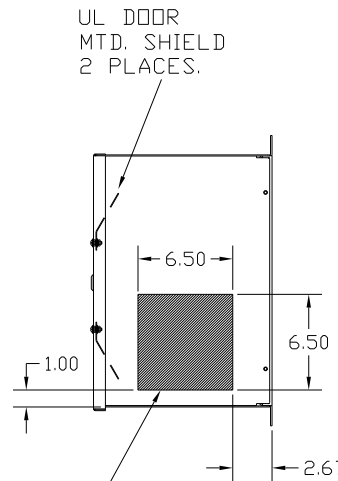
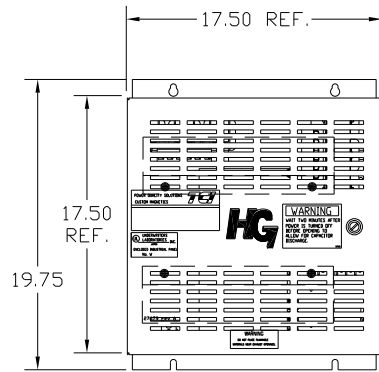
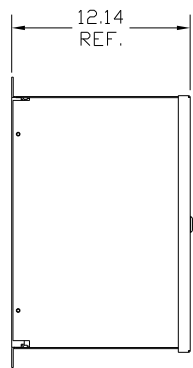


UNIT SPECIFICATIONS:					
KW	HARMONIC	VOLT	HZ	PHASE	FLA
11	5TH	400	50	3	24
ENCLOSURE		NEMA 1			
APPROX.WT. LBS.		79			

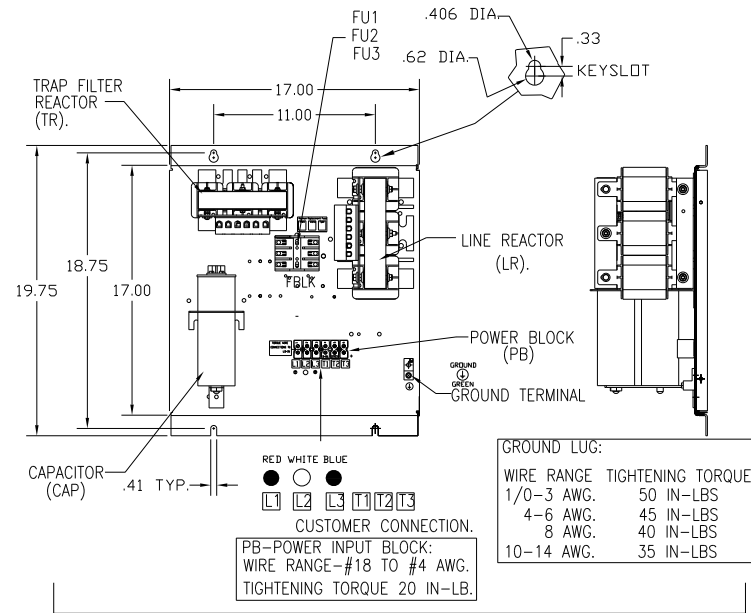
SYMBOL	TCI PART NUMBER
LR	KDRF31T
TR	KTR4L55HG
CAP, 1.. (3 KVAR)	KCAP3A6A
CAP, 2.. (5 KVAR)	KCAP5A6A
Fu1, 2, 3	22924



SEE DWG# 27709 FOR SCHEMATIC



HATCHED AREAS ARE SUGGESTED CUSTOMER WIRE AND EXIT LOCATIONS (BOTTOM ENTRANCE ALTERNATE-CONSULT TCI)



GROUND LUG:

WIRE RANGE	TIGHTENING TORQUE
1/0-3 AWG.	50 IN-LBS
4-6 AWG.	45 IN-LBS
8 AWG.	40 IN-LBS
10-14 AWG.	35 IN-LBS

CUSTOMER IS RESPONSIBLE FOR INSTALLATION TO MEET ALL NATIONAL AND LOCAL ELECTRICAL CODES.

				TOLERANCES (EXCEPT AS NOTED):		7878 N. 86th STREET MILWAUKEE, WI 53224 HG11LW01ST, 11 kW 400/3/50, ENCLOSED.	
				DECIMAL			
				.XX ± .03 .XXX ± .01			
				FRACTIONAL		DRN. BY	
				± 1/32		DSW	
				ANGULAR		DATE	
				± 1/2°		5/12/11	
A AS BUILT		5/12/11		DSW		DWG. NO.	
NO REVISION		DATE		BY		C 104656DG	
						SCALE	
						TO FIT	
						SHT. 1 OF 1	